



LIBERTY'S FOR EXCLUSIVE FURNISHINGS

CRETONNE (as illustrated) Range C3375. A charming floral design in a range of beautiful colour schemes, 30 ins. wide. 2/11 a yard.

Patterns sent on request to Dept. R.A.

The hand-painted Furniture is in a reproduction finish on a cream ground of old ivory tone, comprising :—

SCREEN (four-fold) 5 ft. 6 ins. high. Each fold 18 ins. across	£29 . 17 . 6
CABINET. 2 ft. wide. 4 ft. 4 ins. high. 1 ft. 3 ins. deep	£35 . 0 . 0
BUREAU. 1 ft. 10 ins. wide	£25 . 0 . 0
NEST OF TABLES	£13 . 2 . 6
CIRCULAR TABLE. Top 2 ft. dia. 1 ft. 3 ins. high	£11 . 15 . 0
EASY CHAIR in Calico	£10 . 15 . 0
Loose Cover 55/- extra					

PLAIN SAXONY CARPET in exclusive colourings. 27 ins. wide 12/9 a yard.

LIBERTY & CO. LTD. - - REGENT STREET - - LONDON, W. 1.
TELEPHONE : REGENT 1234

SANATOGEN

TONIC WINE BY WHITEWAYS
OF WHIMPLE

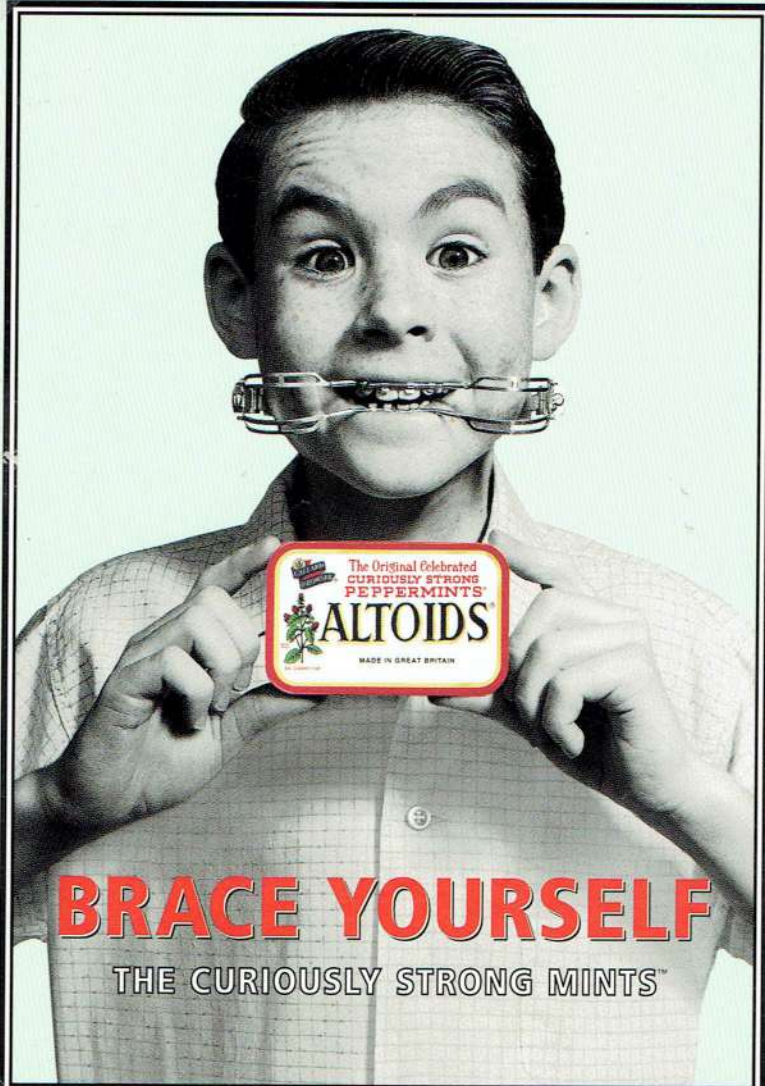


THE PRODUCT WAS INTRODUCED IN 1939. ITS NAME
WOULD APPEAR TO BE A PSEUDO-CLASSICAL BLEND
OF SOME LATIN WORD MEANING HEALTH OR
HEALTHY - PERHAPS **SANATIO** HEALING OR
CURING - AND SOME SCIENTIFIC WORD ENDING
IN -OGEN AS HYDROGEN WHOSE OWN SUFFIX
-GEN MEANS 'THAT WHICH PRODUCES'.
SANATOGEN MIGHT THUS BE LOOSELY
INTERPRETED AS PRODUCING A CURE.

Also 'showcase'

ALTOIDS

LOT 101



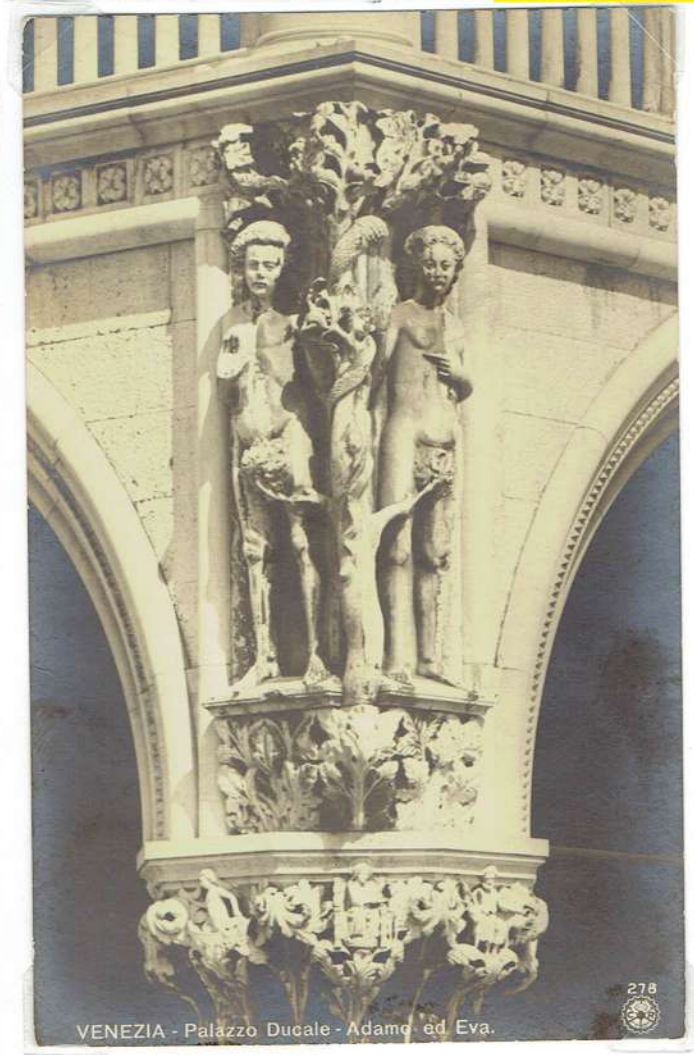
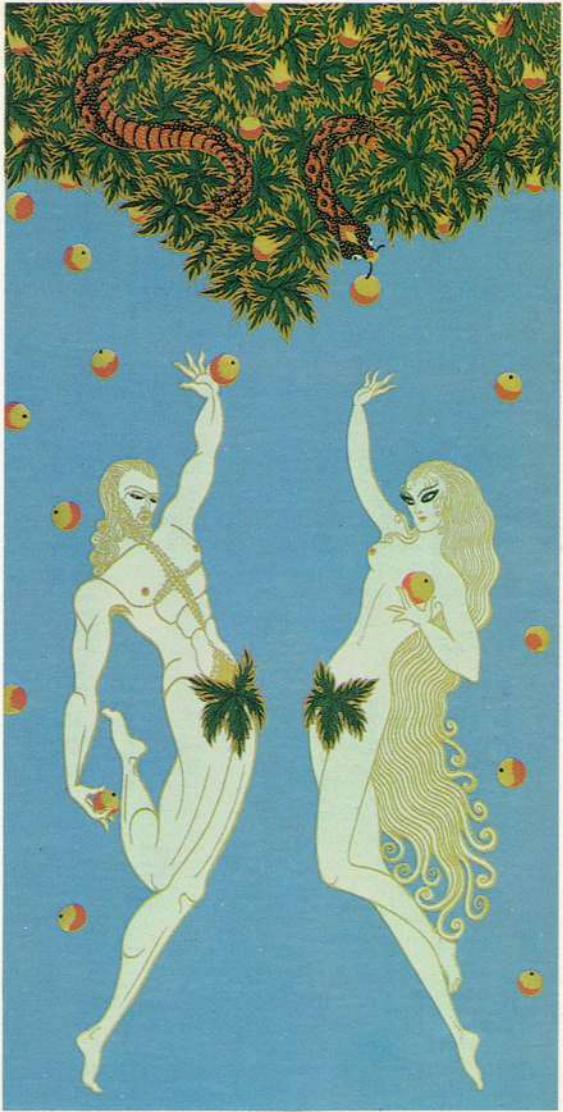
PEPPERMINT LOZENGES BY SMITH KENDON.

THE LOZENGES WERE FIRST MANUFACTURED IN THE SECOND HALF OF THE NINETEENTH CENTURY, WHEN **'-OID'** WAS A FASHIONABLE SUFFIX FOR PATENT MEDICINES. WHEN **ALTOIDS** WAS INTRODUCED AS A VERY STRONG PEPPERMINT, THEY WERE ORIGINALLY INTENDED FOR THE CHEMIST TRADE AND WERE PROMOTED AS THE BEST OR HIGHEST **'-OIDS'** THERE WAS ON THE MARKET. HENCE THE NAME, WITH THE FIRST PART OF THE WORD FROM THE LATIN FOR HIGH **ALTUS** (AS IN ENGLISH 'ALTITUDE')

BRACE YOURSELF

THE CURIOUSLY STRONG MINTS™

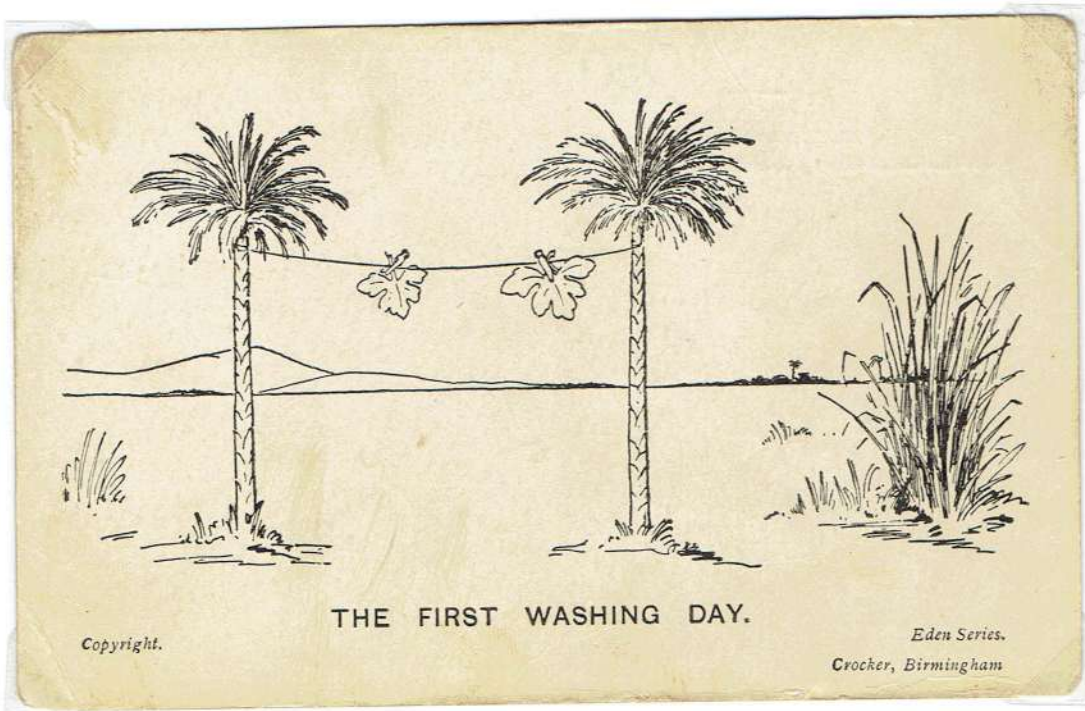
ADAM AND EVE BY ERTÉ (SERIGRAPH 1982)



VENEZIA - Palazzo Ducale - Adamo ed Eva.

278

In the garden of Eden lay Adam,
Contentedly stroking his madam.
In the whole of the world
There was only one girl
and only two balls and he had 'em.



THE FIRST WASHING DAY.

Copyright.

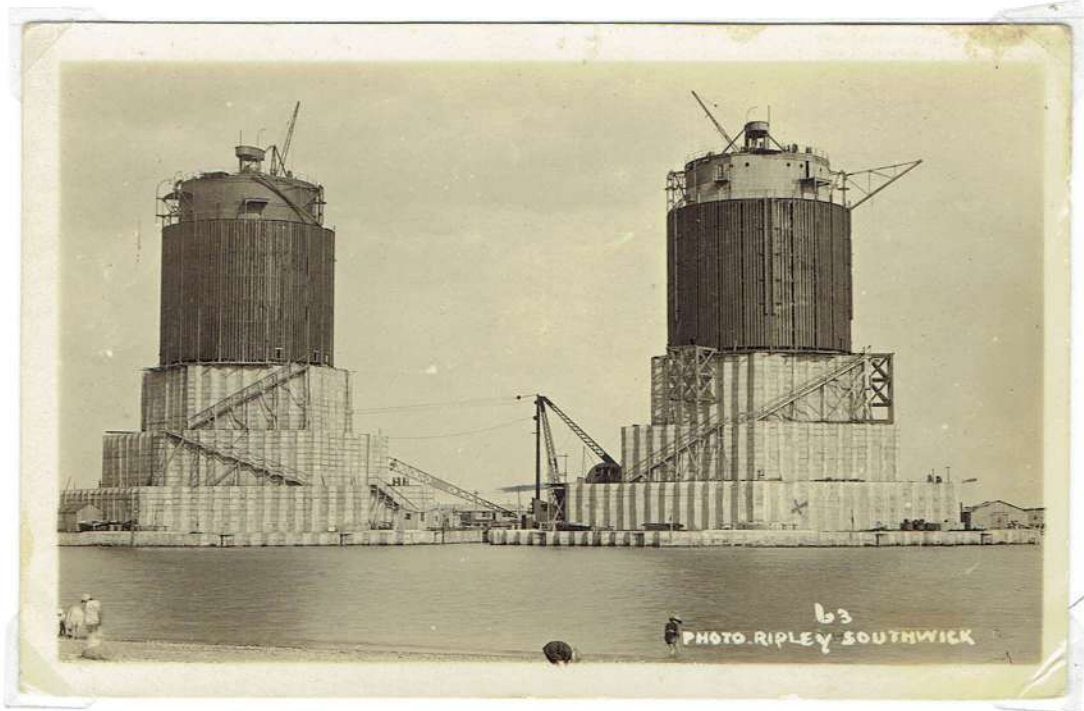
Eden Series.
Crocker, Birmingham

MYSTERY TOWERS IN SHOREHAM HARBOUR.

QUESTION

LOT 102

WORLD WAR ONE MYSTERY 1917.



WRITTEN ON BACK OF CARD

PHOTO. RIPLEY SOUTHWICK.

X IS THE ONE THATS RUNAWAY. IT HAS ROOM FOR 90 MEN AND A SEARCHLIGHT FITTED UP AT THE TOP. IT JUST GOT THROUGH THE HARBOUR 3 FEET EACH SIDE TO SPARE AND SIX TUGS HAD THE JOB OF POLLING.

SHE STARTED ABOUT 12 SUNDAY MORNING AND ARRIVED AT HER RESTING 8 O'CLOCK NEXT MORNING. SHE ONLY SANK AS FAR AS THE FIRST TIER, I THINK YOU CAN GUESS SHE IS SOME HEIGHT. ALL THE WORLD AND HIS WIFE WAS THERE TO SEE THE LAUNCHING BUT I DID NOT GET THERE TILL EVENING TO SEE THE OTHER ONE GAILY DRESSED WITH BUNTING.

ELSIE.



SIDNEY ? MELB ?



ADDRESS TO MRS LOUGH. RECTORY. ALBANY 106 EMPIRE

MESSAGE ON REVERSE: WILL BE ABLE TO COME SATURDAY. SORRY TO KEEP YOU WAITING FOR REPLY. WILL BE ROWND (SIC) AT 9AM

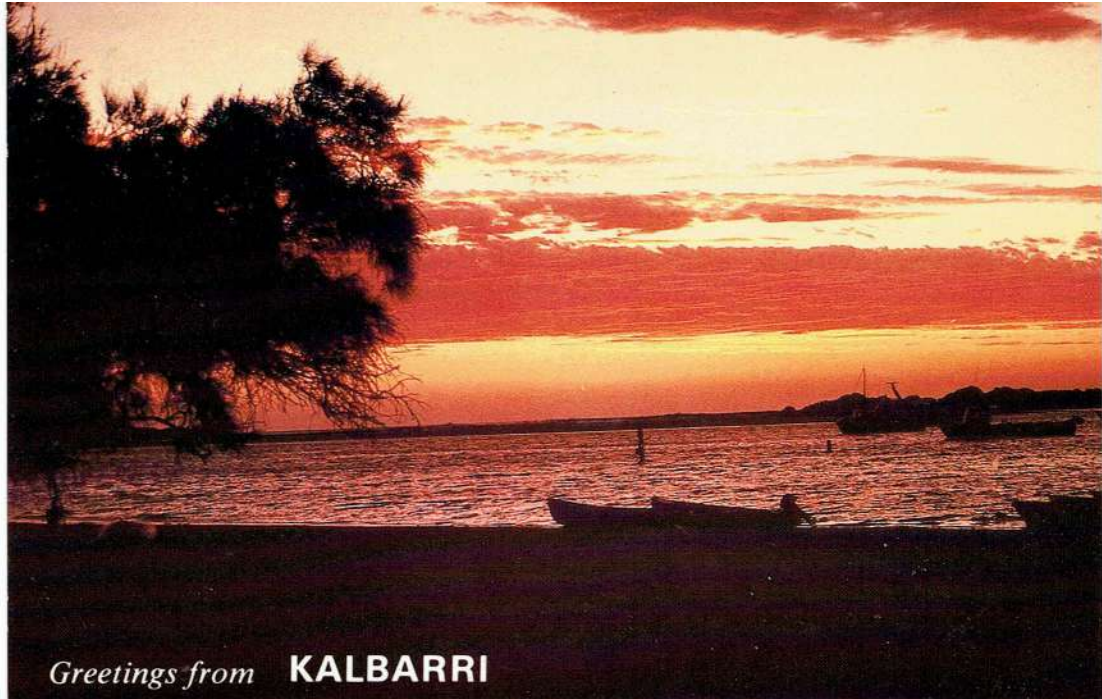
Will be able to come Saturday

reply about 2 weeks ago

Greetings From
CORAL BAY W.A.

LOT 103



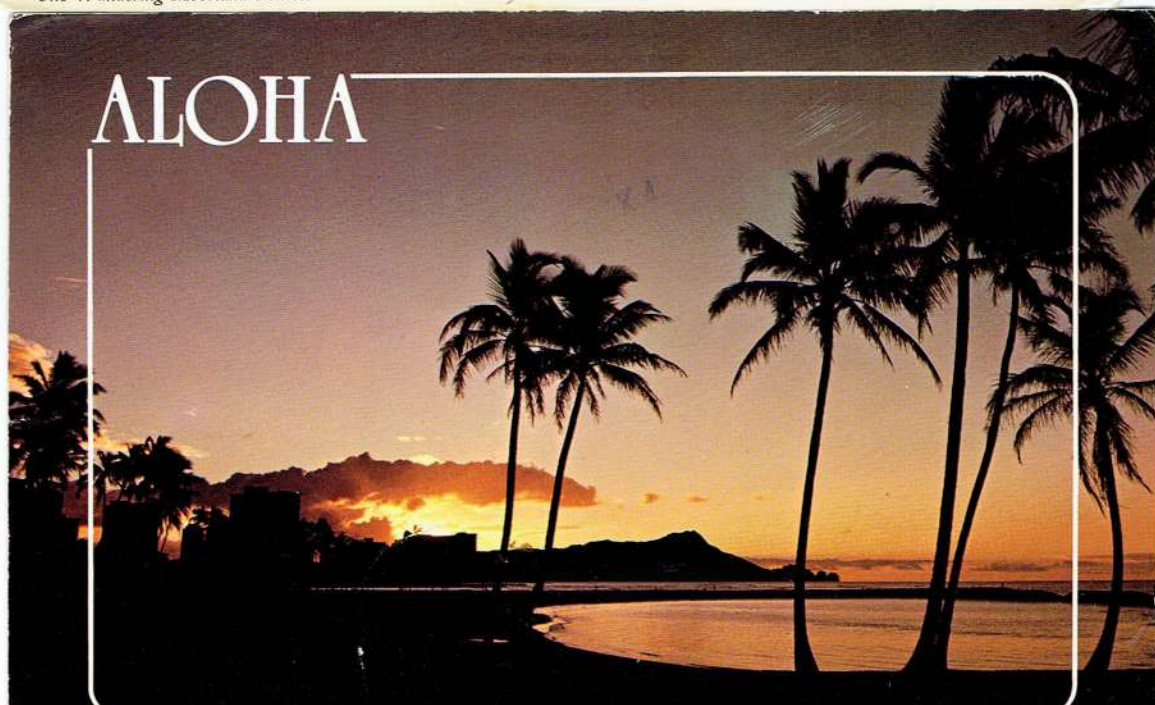


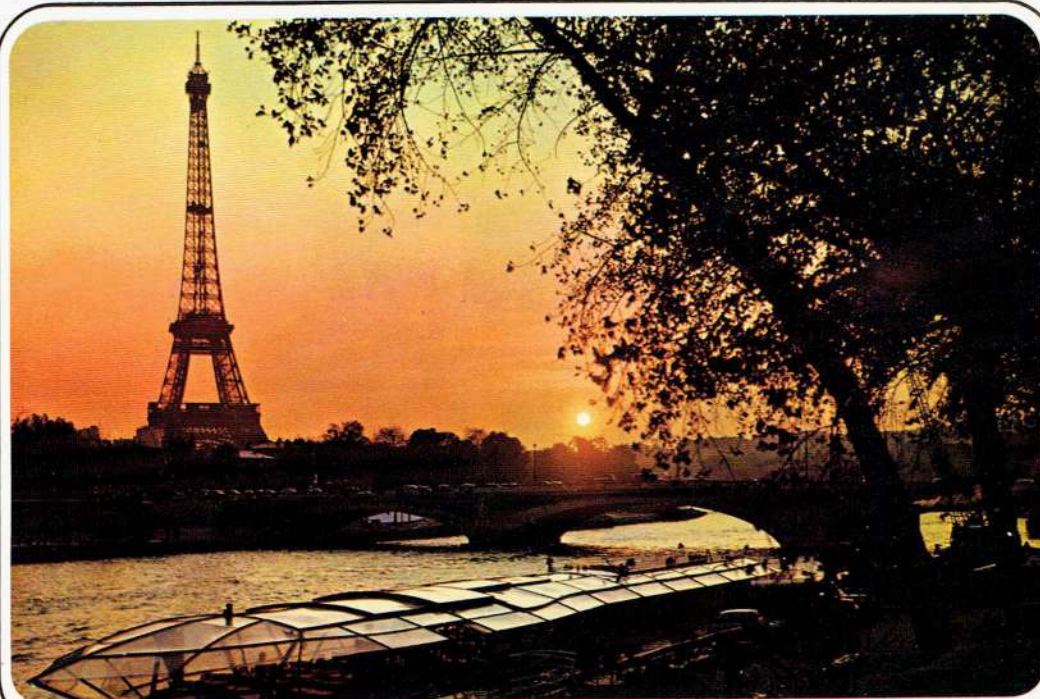
Greetings from **KALBARRI**



The Wandering Moorland Ponies.

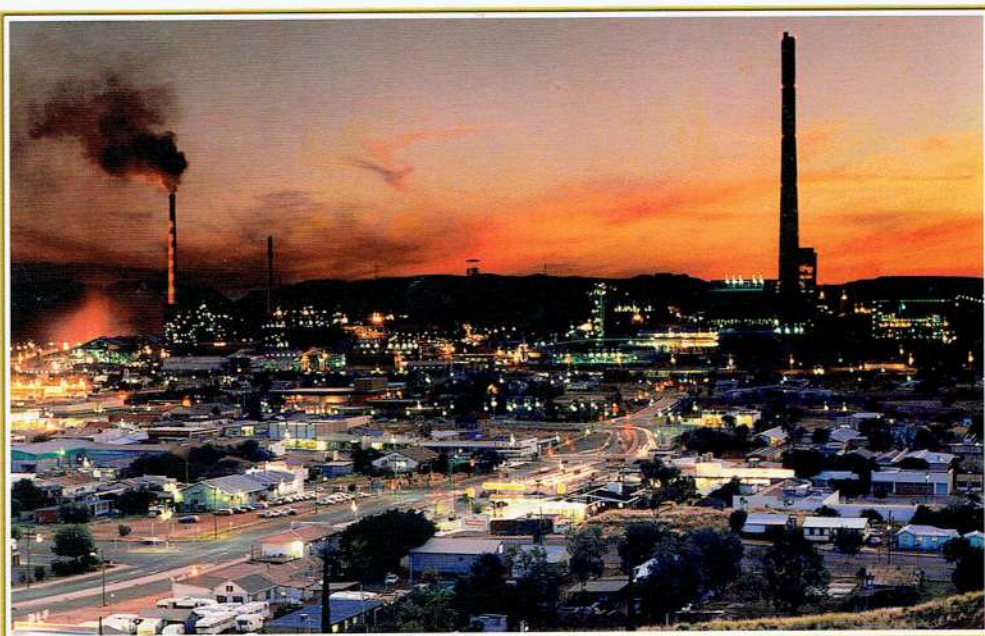
Photo: E. Nigro, F.R.P.S.



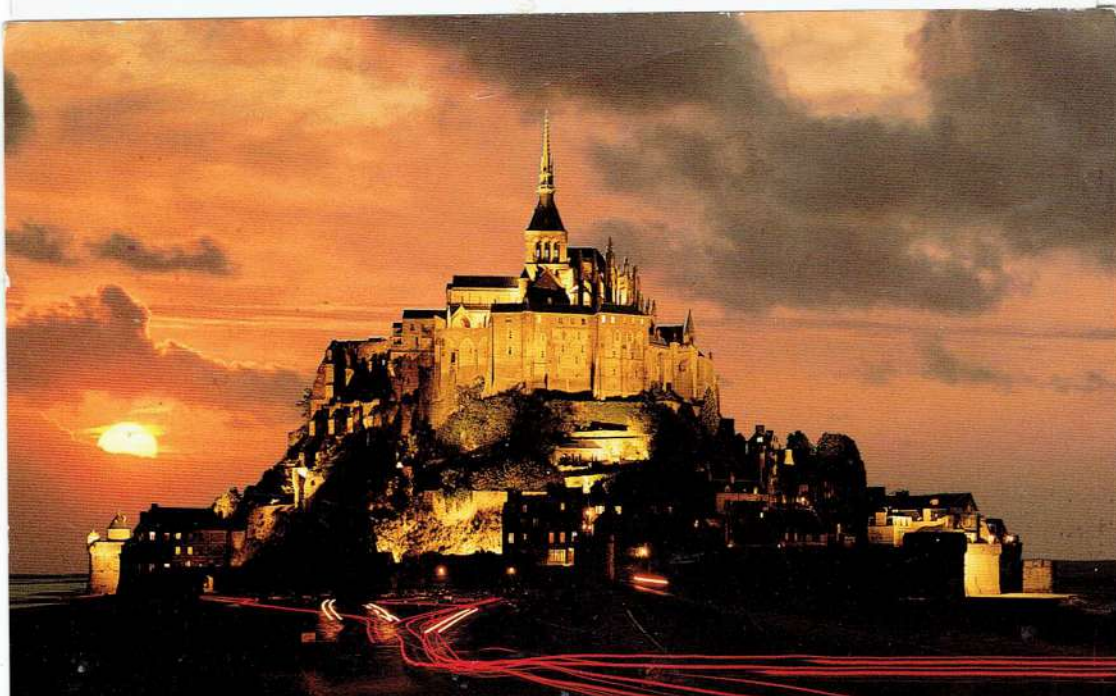


Paris - la Tour Eiffel

IRIS



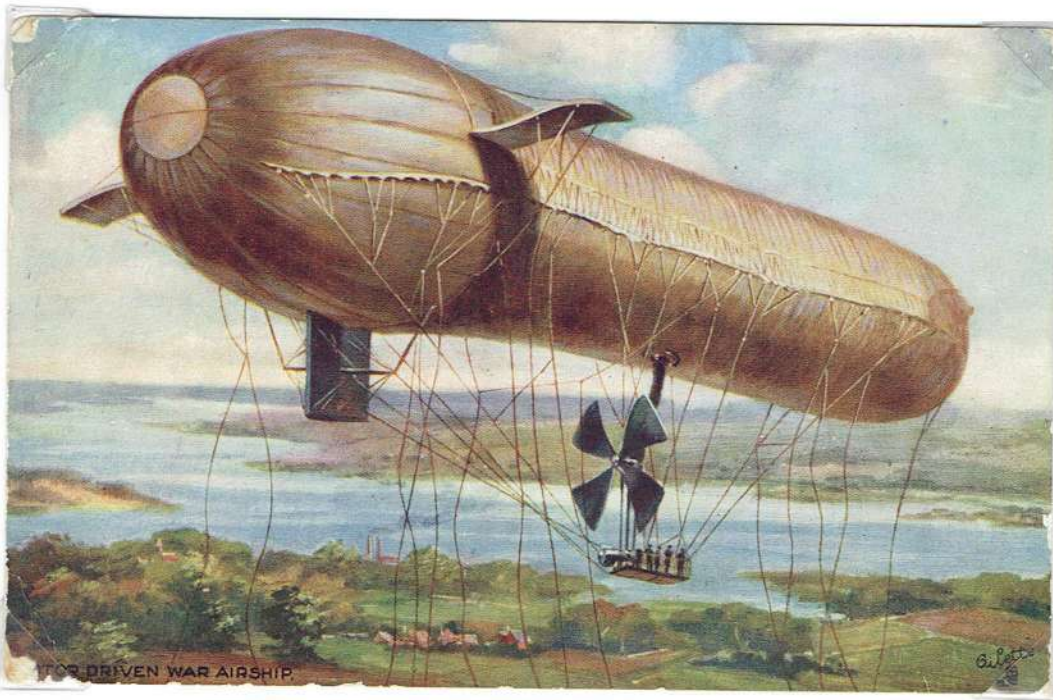
NORTH WEST *Mount Isa* QUEENSLAND



AIRSHIPS

LOT 104

IN THE TWENTIETH CENTURY
A SHORT HISTORY



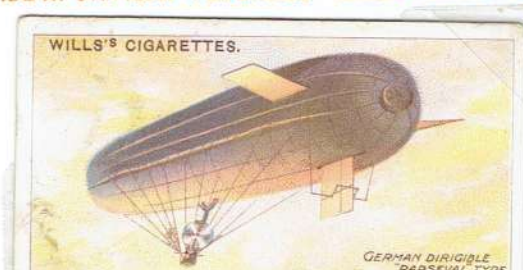
GERMAN PARSEVAL TYPE DIRIGIBLE

TICK DRIVEN AIRSHIP N° 9495.

INVENTED IN 1897 BY MAJOR VON PARSEVAL, IT CONSISTED OF A LONG TORPEDO LIKE ENVELOPE ENCLOSED IN WHICH, ARE TWO SMALLER BALLOONS, KEPT CONTINUALLY TAUT BY AIR PUMPED INTO THEM BY THE SAME MOTOR WHICH DRIVES THE SCREW.

PARSEVAL AIRSHIP PRODUCTION WAS OVERTAKEN BY ZEPPELINS AND CEASED PRODUCTION IN 1909.

LENGTH: 58M ENGINE: ONE 100HP DAIMLER 4 CYLINDER SPEED: APPROX 35 KPH.

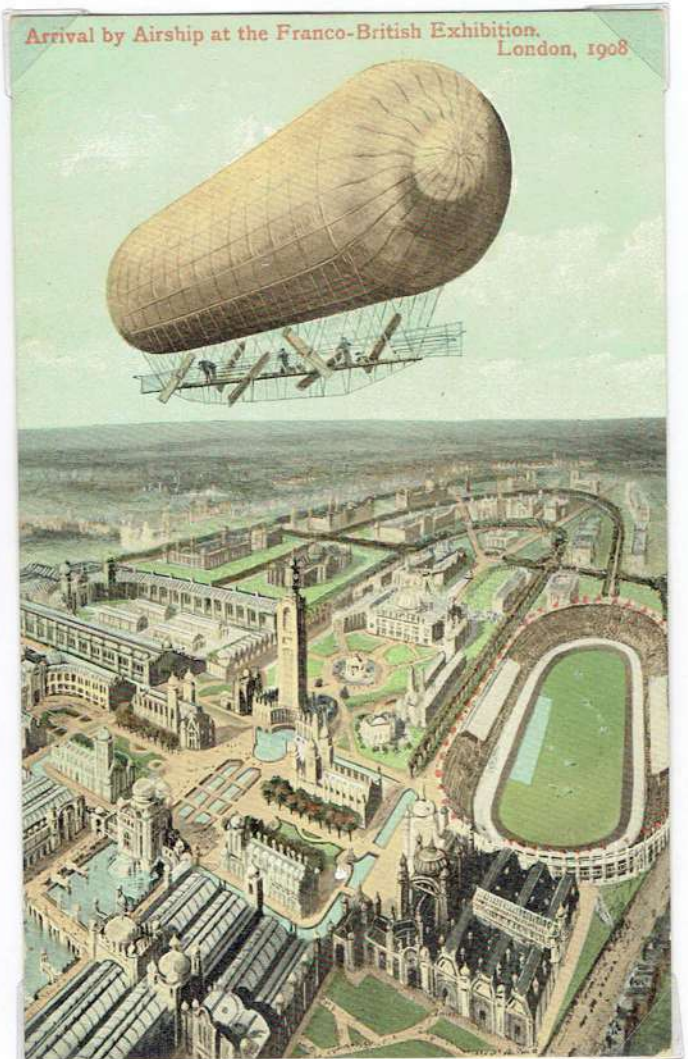


ENGLAND'S ANSWER CAME IN THE SHAPE OF THE
 1905 BARTON-RAWSON AIRSHIP.

POWERED BY TWO BUCHET 50 ENGINES, SHE
 HAD A GROSS WEIGHT OF 8172 lbs (pounds)

SHE WAS WRECKED ON HER FIRST FLIGHT FROM
 THE ALEXANDRA PALACE
 LONDON

BUT "TRY! TRY! AGAIN!"
 SHE WAS NEXT SEEN AT
 THE FRANCO-BRITISH
 EXHIBITION OF 1908.



VALENTINE 'ARTOTYPE' SERIES
 PRINTED IN GREAT BRITAIN. POSTMARKED PERTH. W.A. - 5.1909

OFFICIAL FRANCO-BRITISH EXHIBITION POSTCARD
 PRINTED BY VALENTINE & SONS LTD DUNDEE.

AIRSHIPS AT WAR • 1914-1918 •

GERMAN ZEPPELINS OVER ENGLAND •

LOT 104



THE END OF THE "BABY-KILLER."



3787 M

"SHIPS THAT PASS IN THE NIGHT."

OCTOBER 1st, 1916.

ROTARY PHOTO, E.C.

"DEAR BROTHER THIS IS A GERMAN ZEPPELIN WITCH (sic) WAS BROUGHT DOWN IN LONDON. I EXPECT YOU HEARD OF IT IN THE PAPER. YOURS TRULY J.H. BLIGHT"

- a. PUB: VALENTINES
- b. PUB: ROTARY PHOTO
- a. ACTUAL PHOTOGRAPH OF A GERMAN ZEPPELIN OVER LONDON IN 1915.



db

1928

GEN. UMBERTO NOBILE 'ITALIA' 19

LOT 105

1928 50th ANNIVERSARY
1978

"ITALIA" AIRSHIP POLAR EXPEDITION



THE CHARACTERISTICS of the 'ITALIA':
 LENGTH: 106 metres
 CRUISING SPEED: 80 Km
 CUBIC CAPACITY: 19,000 cub metres
 ENGINES: 3 250 HP

ESTIMATED COST OF EXPEDITION 3.5 MILLION LIRE RAISED BY PRIVATE SUBSCRIPTION IN MILAN, & TOOK PLACE UNDER THE AUSPICES OF THE GEOGRAPHICAL SOCIETY

ARRIVAL AT Kings Bay 6th MAY 1928



DEPARTURE from MILAN 15th APRIL 1928



GENERAL UMBERTO NOBILE DESIGNER OF THE 'ITALIA' & LEADER OF THE EXPEDITION



LIEUT. ALFREDO VIGLIANI R.N. NAVIGATING OFFICER



Professor FRANCIS BEHOUNEK (PRAGUE UNIVERSITY) SCIENTIST (1898 - 1973)



DR. FINN MALMGREN (1895-1928) METEOROLOGIST PROFESSOR OF LIPPSALA UNIVERSITY

ON 30th MAY 1928, DR. MALMGREN with MARIANO & ZAPPI LEFT THE RED TENT TO MARCH ACROSS THE ICE-BACK TO BROCH IS & on the 14th day MALMGREN, HAVING ONE FOOT FROZEN PASSED OVER HIS RATIONS TO HIS TWO COMPANIONS & URGED THEM TO PRESS ON IN SEARCH OF HELP & TO LEAVE HIM TO DIE IN PEACE



On June 24-1928, Capt. Lundborg flew Gen. Nobile from the Red Tent to VIRGO BAY. On his return to rescue the remaining 5 survivors of the 'ITALIA' he experienced landing difficulties & overturned his FOKKER. After 48 days on the pack-ice the 5 survivors were rescued by the 'KRASSIN' which arrived close by the 'Red Tent' on 12th JULY 1928.

ITALIA & KRASSIN



AFTER 43 DAYS MARCHING ACROSS THE ICE-BACK & SUFFERING INCREDIBLE HARDSHIPS WITHOUT FOOD FOR THE LAST 12 DAYS MARIANO & ZAPPI WERE RESCUED BY THE RUSSIAN ICE-BREAKER 'KRASSIN' ON JULY 12 1928



ON 16.6.28 the flying-boat 'LATHAM' left CAUDEBEC-en-CAUX with a crew of 4: ROALD AMUNDSEN & LIEF DIETRICHSEN went aboard at BERGEN 16-6-28. The 'LATHAM' left TROMSØ for SPITZBERGEN ON 18-6-28 to search for 'ITALIA' survivors, but beyond NCAPE it disappeared in the Arctic Ocean

ITALIA MONUMENT AT TROMSØ

HERE UNITED UPON THIS STONE ARE THE NAMES OF THOSE WHO DIED IN THE WRECK OF THE 'ITALIA' AND THOSE WHO GAVE THEIR LIVES TRYING TO RESCUE THEM IN REMEMBRANCE OF A GLORIOUS FEAT OF HUMAN ENDEAVOUR TODAY A MEMORIAL AND TESTIMONY TO THE BROTHERHOOD OF MAN.

ON MAY 25, 1928 THE AIRSHIP ITALIA AFTER FLYING FOR 134 HOURS OVER UNEXPLORED REGIONS CRASHED UPON THE ICE NORTH OF SYVALBARD OF THE CREW THERE PERISHED RENATO ALESSANDRINI · ETTORÉ ARDUINO · ATTILIO CARATTI · CALLISTO CIOCCA · USGO LAGO · FINN MALMGREN · VINCENZO POMELLA · ALDO PONTREMOLI

ON JUNE 18, 1928 ROALD AMUNDSEN · RENE GUILBAUD · GILBERT BRAZY · ALBERT DE CUVERVILLE · LIEF DIETRICHSON · EMILE VALETTE · WERE LOST IN THE BARENTS SEA GALLANTLY FLYING TO RESCUE THE SURVIVORS OF THE ITALIA

ON SEPTEMBER 29, 1928 FLYING HOMEWARD AFTER THE SEARCH FOR THE ITALIA AND FOR AMUNDSEN THERE PERISHED UPON FRENCH SOIL PIERLUIGI PENZO · TULLIO CROSIO · GIUSEPPE DELLA GATTA

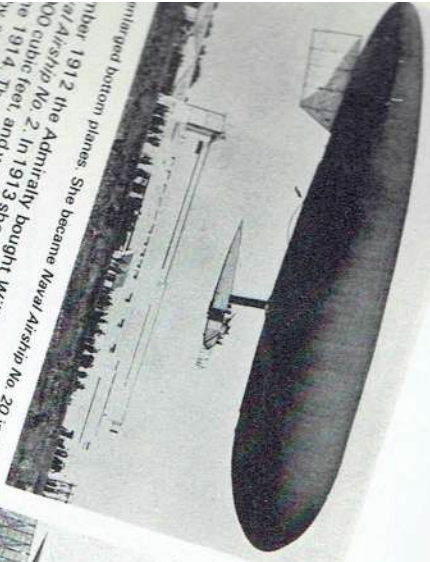
THE 50th ANNIVERSARY OF THE FIRST TRANSATLANTIC FLIGHT OF THE R-100 WAS COMMEMORATED BY THE RELEASE OF TWO CACHETED COVERS AND TWO SHEETS OF MULTI COLOURED LABELS.

LOT 105



ISSUED BY THE FEDERATION QUEBECOISE DE PHILATELIE ON NOVEMBER 11, 1980.
 THE BACK OF EACH COVER BEARS A RECTANGULAR CANCELLATION IN RED WHICH REPRODUCES THE ORIGINAL 1930 CANCEL.

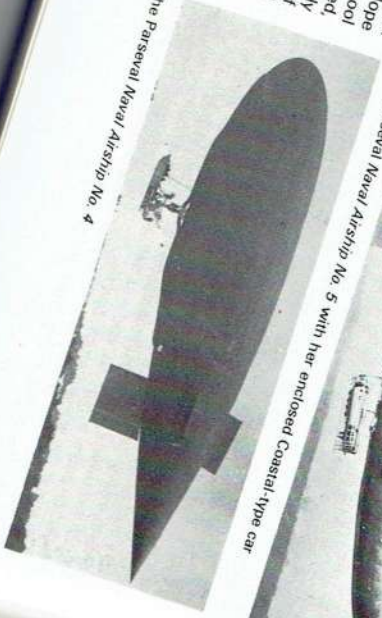




1912 the Admiralty bought *Willows 4*, which then made with this car, and in March 1915 the envelope of the former of the successful fleet of Submarine Naval Airships 3 and 4. In August 1914 these

102

The Parseval Naval Airship No. 4

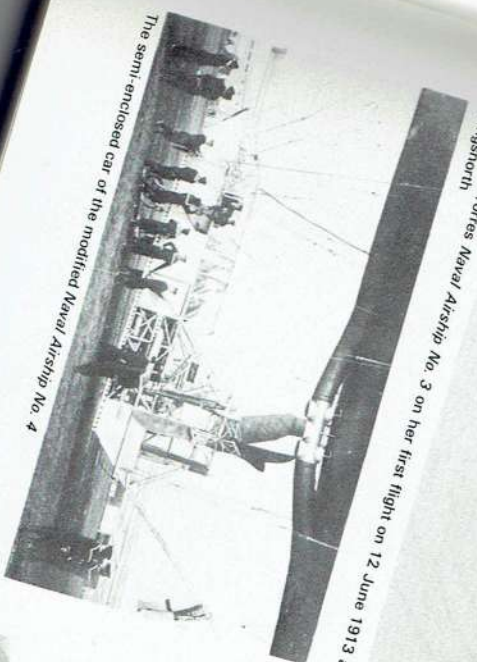


The Parseval Naval Airship No. 5 with her enclosed Coastal-type car

were the only British naval airships of real operational value, and were used to escort the original British Expeditionary Force to France, and also demonstrated the value of non-rigid airships for patrol duties. In 1915 No. 8, a larger Astra, was also employed to patrol the Channel, and much later in the war Parsevals 5 and 6 were commissioned into the Royal Naval Air Service (RNAS). Parseval No. 7 was also delivered but was 'cannibalised', and her parts were used as spares for the other Parsevals.



The Astra-Torres Naval Airship No. 3 on her first flight on 12 June 1913 at Kingsnorth



The semi-enclosed car of the modified Naval Airship No. 4

The SS ships were made by various firms, and were then in use on and off as a school for a new three-seater car with dual control, but only the former of the successful fleet of Submarine Naval Airships 3 and 4. In August 1914 these

103



Morning Post, the Labady-built airship wrecked at Farnborough on 4 May

"UNCLE TOMS CABIN" 1900~

IN THE 35 YEARS SINCE THE END OF THE CIVIL WAR NOT VERY MUCH HAD CHANGED FOR BLACKS IN THE SOUTHERN UNITED STATES~



"MELODY".



14. MY HEART TURNED BACK TO DIXIE.

- 1. PUB. VALENTINES
- 2. PUB: C.T. AMERICAN ART



Copyright 1897 by F. L. F. W. S.

"WE'S IN HEBEN."




COPYRIGHTED, 1905, AND PUBLISHED BY KNAFFL & BRO., KNOXVILLE, TENN.

"CRYING FOR YOU"
Hope to be on hand tomorrow night
Mrs. Willie-



Picanninies.

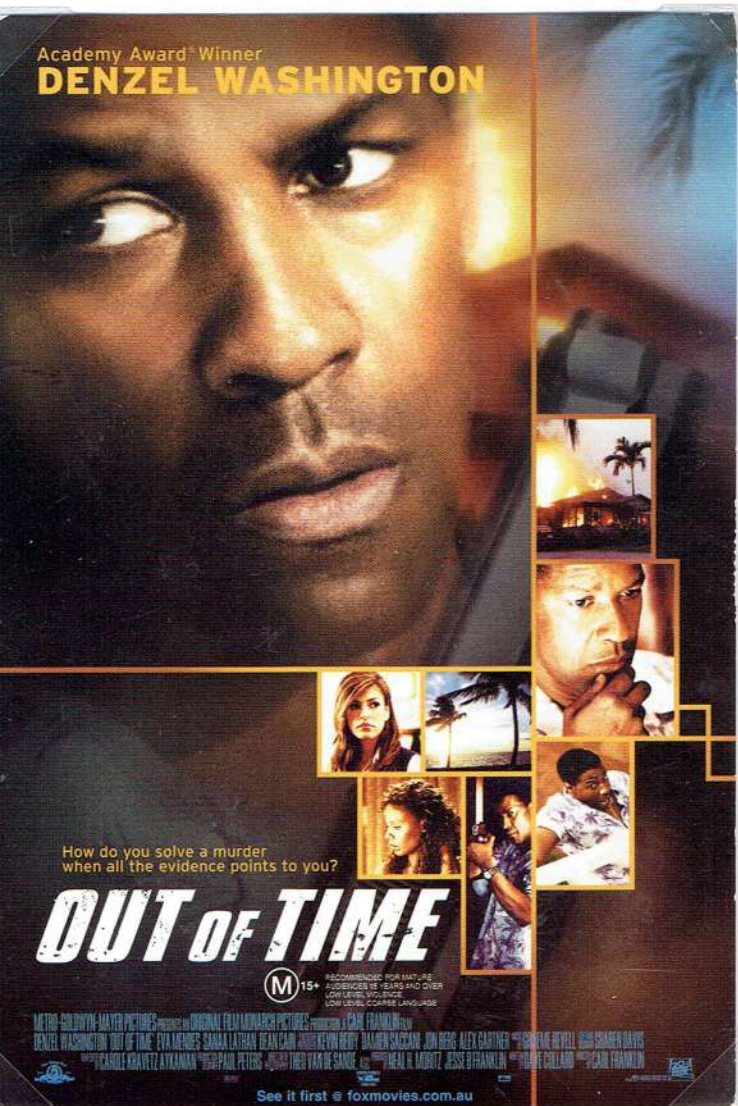
The Knight Series  NO. 543

THE COON CARDS. PUBLISHED BY ARRANGEMENT WITH DEAN & SON, L^{TD}. LONDON.

LOT 106



INTEGRATION TAKES A SYMBOLIC STEP FORWARD WITH THE INCORPORATION OF AFRICAN-AMERICANS INTO IMAGES OF HIGHLIFE. PAN-AM AIRLINE ADVERTISING POSTCARD 1970.



HOLLYWOOD LEADING MAN
ACADEMY AWARD WINNER.

BRIDGES

LOT 107

Inspiration for this display was triggered by the acquisition of a book titled "Bridges", written by Steven A. Ostrow.

Structures on show all feature in the book which tracks the evolution of the bridge from its earliest form to a pair of mammoth projects scheduled for completion in 1997.

Will they prove to be as durable as some of the early Roman bridges still in use today? Only time will tell !



The first manmade bridges were tree trunks or stones (usually flat granite slabs known as clappers or clams) placed across streams. This three span clapper bridge is in Dartmoor, U.K.

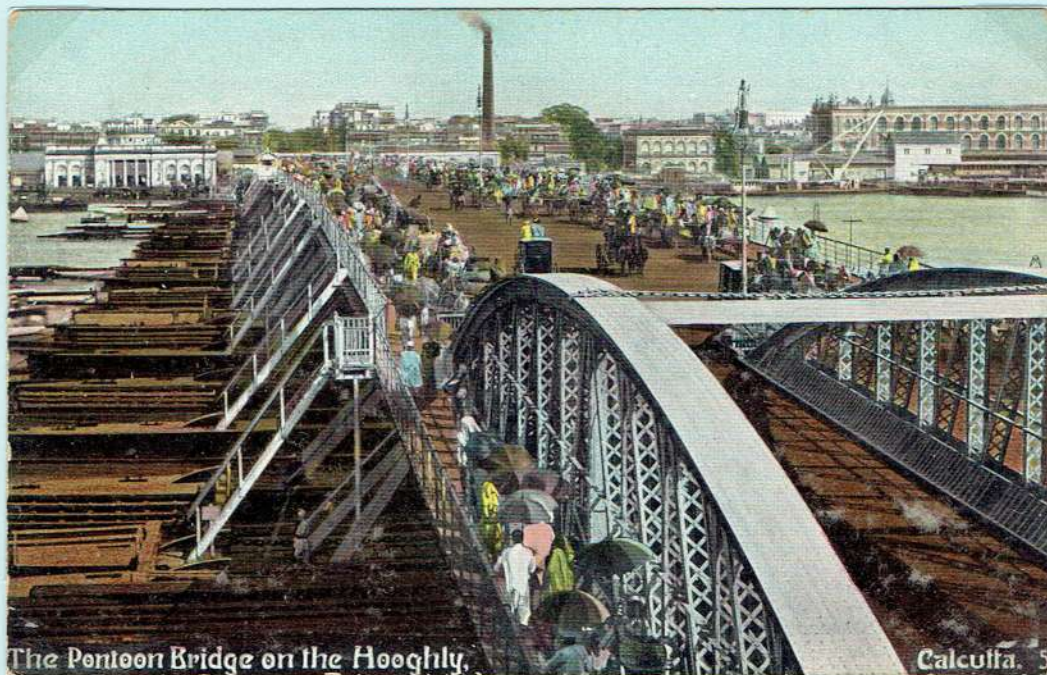


6180 Roma - Isola Tiberina.

The bridge on the right on both cards is the Pons Fabricius, the oldest bridge standing in Rome. Built in 62 B.C., it connects the city to the Isola Tiberina, in the Tiber River, once the home of the Temple of Aesculapius. This temple was visited by many seeking healing and cures. The other side of the island is linked to the city by the Pons Cestius, built around 46 B.C.



Feb. 5th 1903. Roma - Isola Tiberina ora S. Bartolomeo.
From L. Bentham.



A temporary pontoon bridge over the Hooghly River, Calcutta, India, was built in 1874 by Sir Bradford Leslie. A tidal rise of some six metres made the bridge all but unusable during that period. It was finally replaced by the Howrah Bridge on February 28, 1943.





Greetings from Sydney - Harbour Bridge. (Anon)

Views from North Sydney looking over Lavender Bay.

Harbour Bridge, Sydney, N.S.W. (Anon)

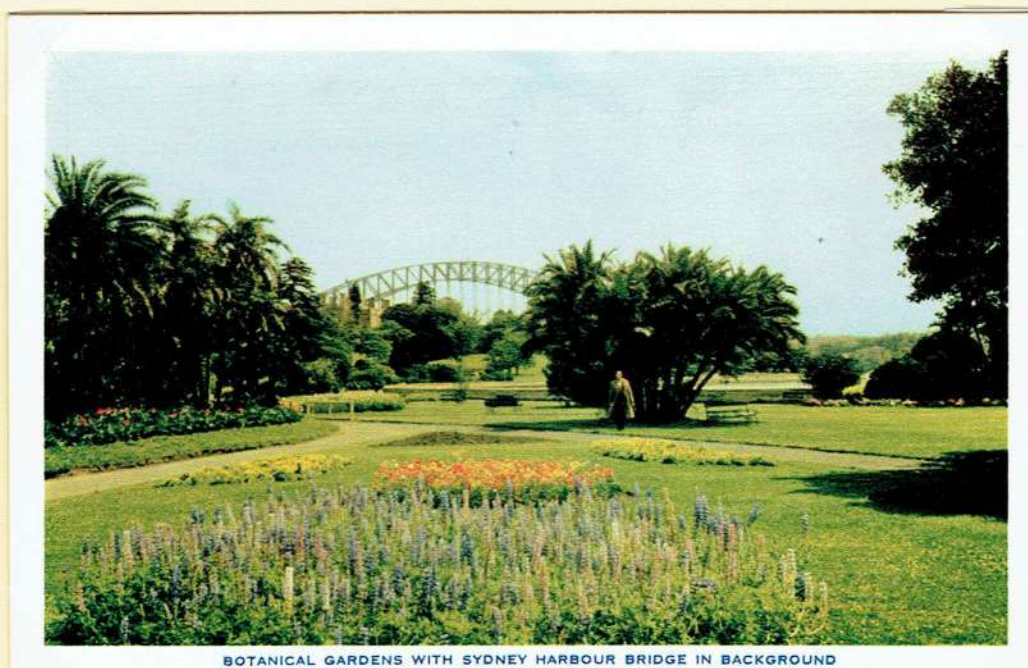




The Harbour Bridge and Luna Park , Sydney. (Nucolorvue)

Three cards (21, 16 and 24) from an untitled series.

Botanical Gardens with Sydney Harbour Bridge in background.
(Nucolorvue)



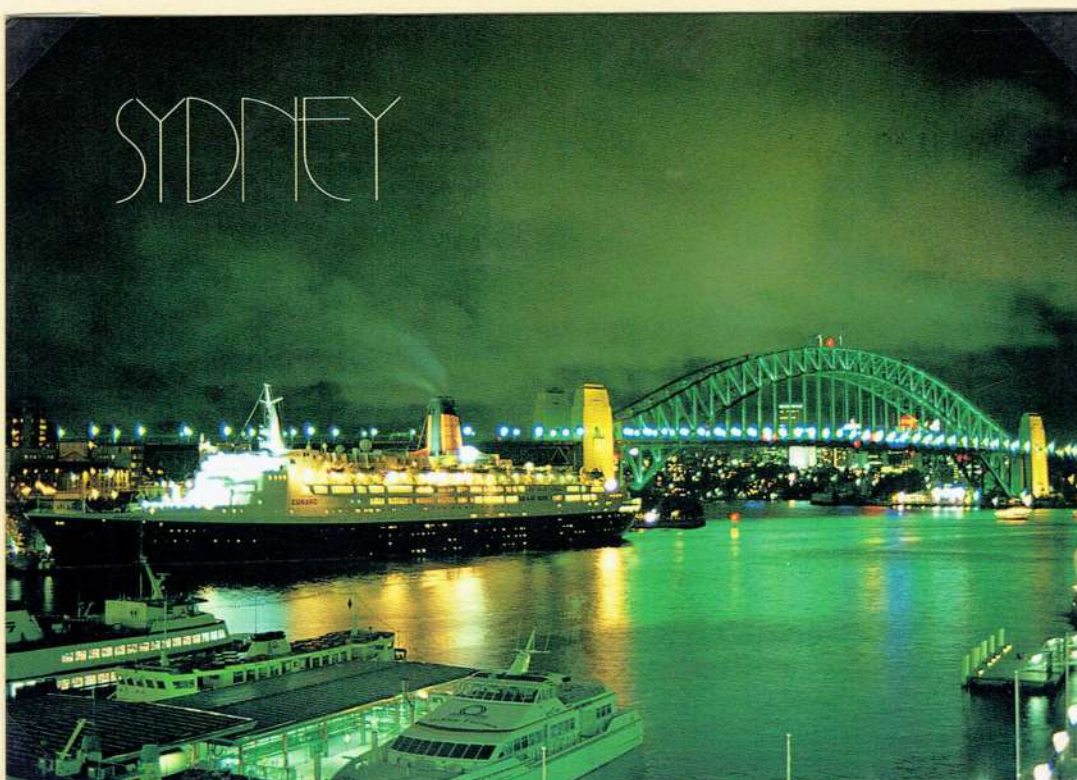
*The Canberra
at Circular Quay*



The Canberra at Circular Quay. (David Messent)

Shipping at the adjacent passenger terminal ---

Q.E. II in Sydney. (Bartel)



POSTCARDS FROM JOE

LOT 109

Being a stamp collector as well as a postcard collector, I always turn a card over and look at the stamp.

While browsing through a box of twenty cent cards I noticed some that were written by the same person.

He sometimes wrote his messages on the back of several cards and numbered them. It is unfortunate that some of the cards are missing.

His mother was a postcard collector as he frequently refers to "filling up your album." Whether it was her intention or his, she seems to have collected scenes of war damage plus cards showing the same scene as it looked before the bombardments.

The majority of the cards in this display are from Joe and where the text is copied, it is exactly as it is written.

My heart still flutters whenever I see a card showing W.W.1 damage, hoping the reverse will reveal another postcard from Joe.

Dated:-10-5-18. Card 1

Dear Mother

I send these few lines just to help to fill up the post cards and also these few card to help to



440 ARRAS. — Hôtel de Ville. — Façade principale
The Town-Hall principal front. — LL.



Visé Paris n° 2725 Edition Dutlos-Grassin
ARRAS. — L'Hôtel de Ville. — Façade principale.
The Town-Hall. — Principal Front.

Dated:-10-5-18. Card 2

to fill up your post album this card is before a bombardment how nice it looks the other card is the same building but badly distroyed through shell fire





Dated :- 3 - 9 - 18.

Mother

Just a couple of post card
to help to fill up your
album, We was billeted
with in fifty yards of this
church,

Joe



Dated :- 3-9-18.

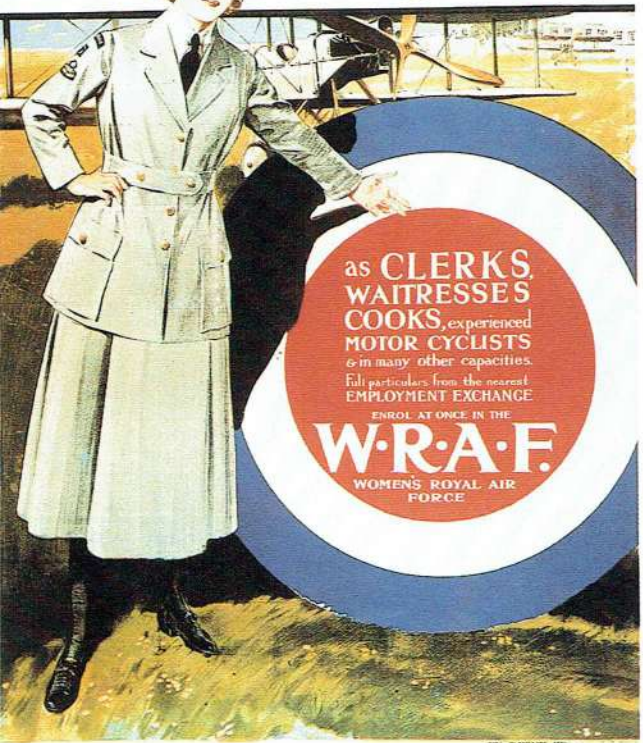
Annie

Just a post card to you
as a relic of some where
in france

Joe

LOT 110
20 CARDS

**British Women! — the
Royal Air Force
needs your help**



as **CLERKS,
WAITRESSES
COOKS,** experienced
MOTOR CYCLISTS
& in many other capacities.
Full particulars from the nearest
EMPLOYMENT EXCHANGE
ENROL AT ONCE IN THE
W·R·A·F.
WOMEN'S ROYAL AIR
FORCE

Beat
**'FIREBOMB
FRITZ'**

**BRITAIN
SHALL NOT
BURN**

BRITAIN'S FIRE GUARD IS BRITAIN'S DEFENCE

ISSUED BY THE MINISTRY OF HOME SECURITY

**WOMEN OF BRITAIN
SAY -
"GO!"**

An illustration showing two women and a child looking out of a window. The woman on the left is wearing a yellow dress, and the woman on the right is wearing a dark dress with a patterned shawl. A small child is standing between them. Outside the window, soldiers in a trench are visible against a landscape with hills and a blue sky.

WOMEN'S ROYAL NAVAL SERVICE
APPLY TO THE NEAREST EMPLOYMENT EXCHANGE