

It was **DEATH**
for him to look
on this
Girl!



Jedda

- a story of
EVE in EBONY!

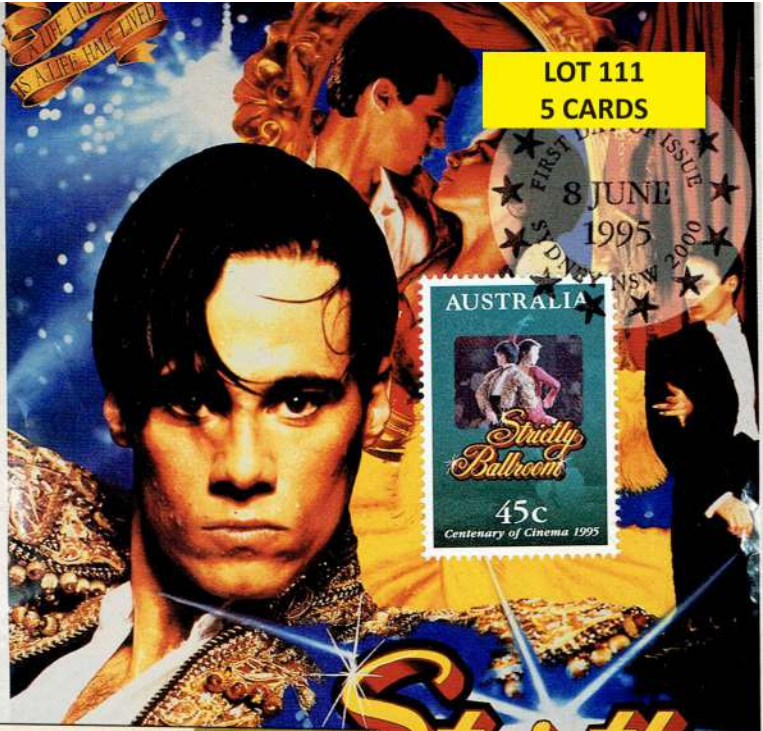
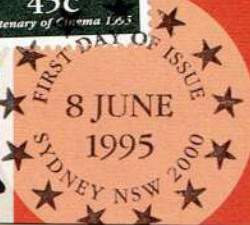
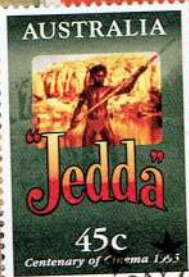
starring *Ngarla* *Pitj*

KUNOTH * TUDAH

BETTY SUTTOR · GEORGE SIMON
PAUL REYNELL

a Charles CHAUVEL Production
PRODUCED AND DIRECTED BY
CHARLES CHAUVEL

FOR GENERAL EXHIBITION
FILMED IN
GEVACOLOR



LOT 111
5 CARDS



THE STORY OF THE KELLY GANG

(By BIOGRAPH)
Specially taken by
MESSRS JOHNSON & GIBSON, Melbourne.

An Entirely
NEW and
EXQUISITE
Pictorial
Representation
of



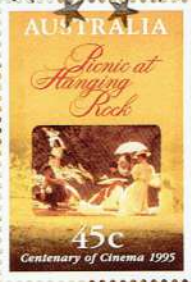
The
Thrilling
Story
of
The KELLY



ON OUR SELECTION

WITH **BERT BAILEY** DIRECTED BY **KEN G. HALL**
FRED MACDONALD
DICK FAIR HEADING AN ALL-AUSTRALIAN CAST

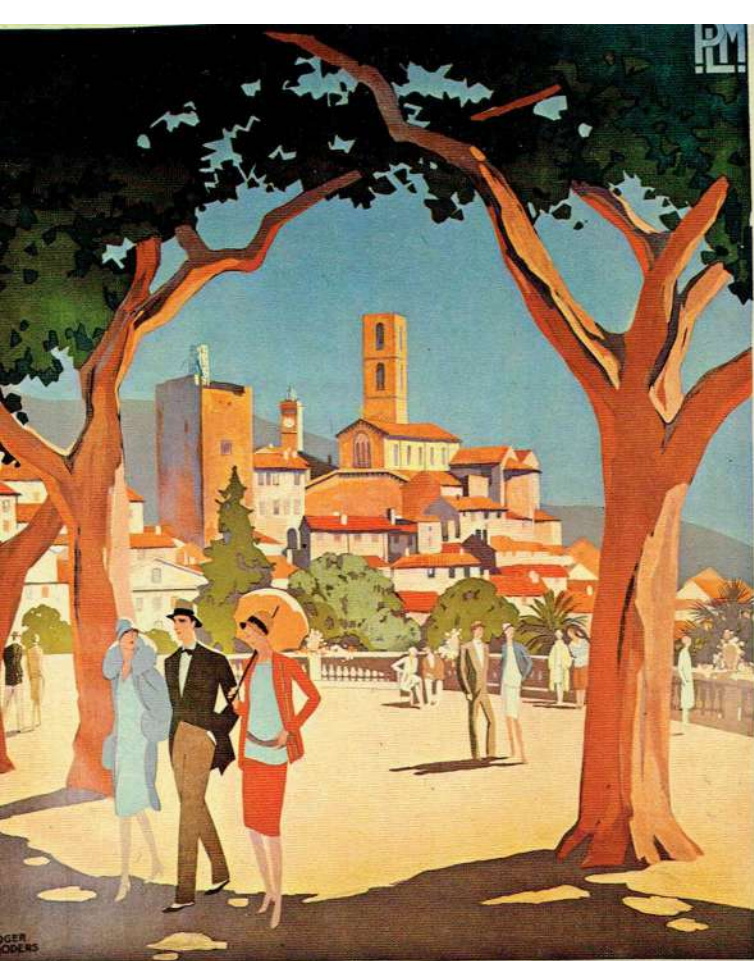
FOR GENERAL EXHIBITION



at Hanging Rock

A RECOLLECTION OF EVIL.
... RACHEL ROBERTS, DOMINIC GUARD
"PICNIC AT HANGING ROCK"
... HELEN MORSE, JACON WEAVER





GRASSE
STATION CLIMATIQUE
LA VILLE DES FLEURS ET DES PARFUMS



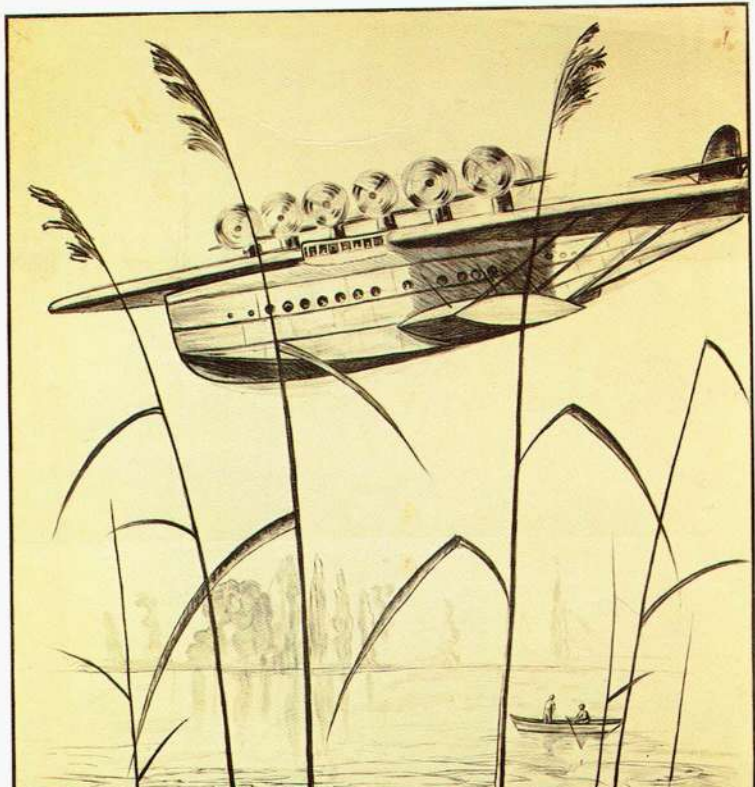
LOT 112
APPROX 30 CARDS

LA PLAGE DE CALVI. CORSE

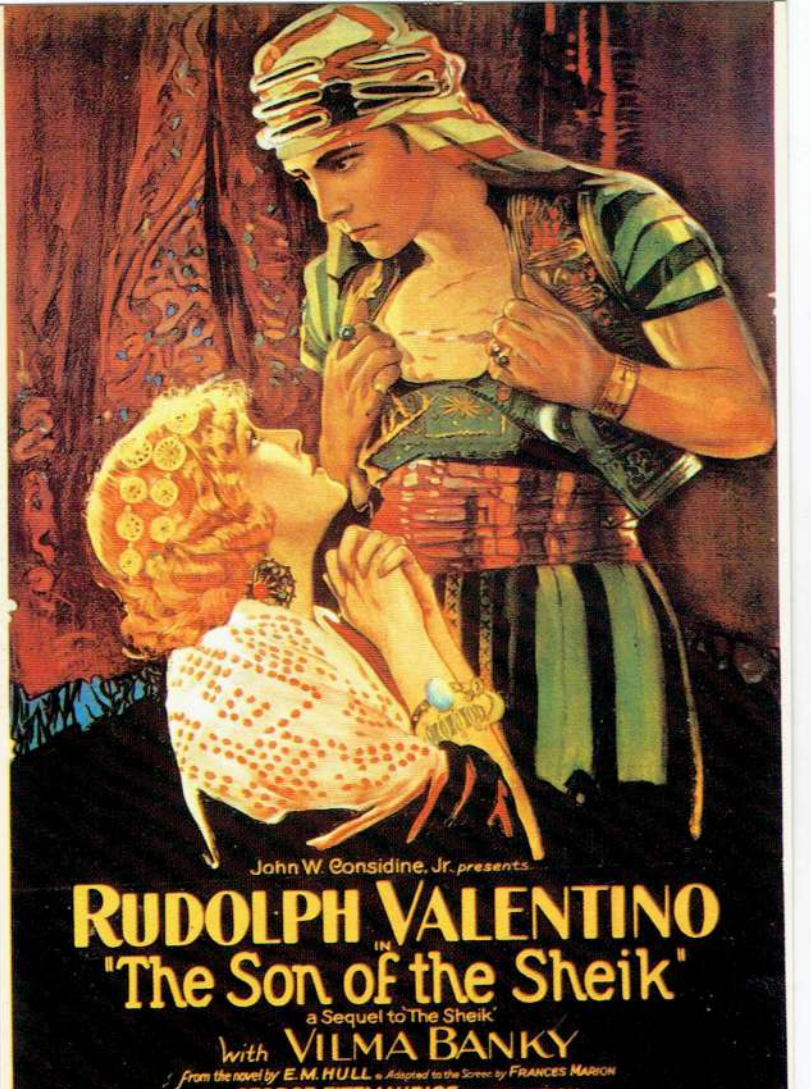
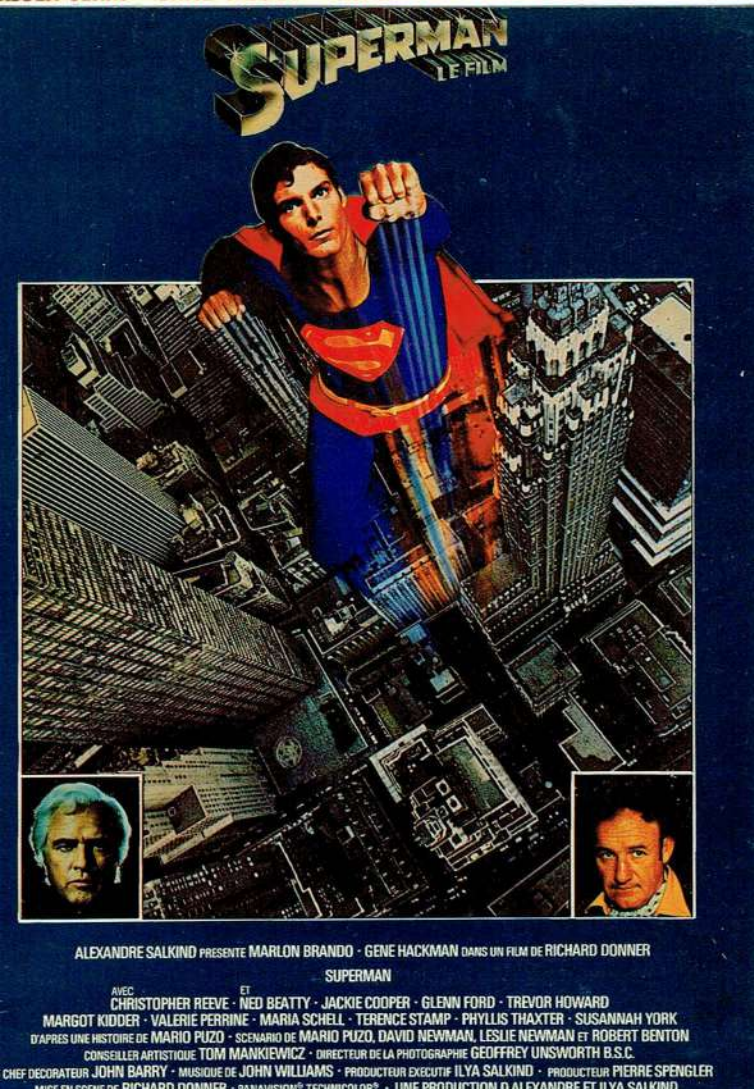
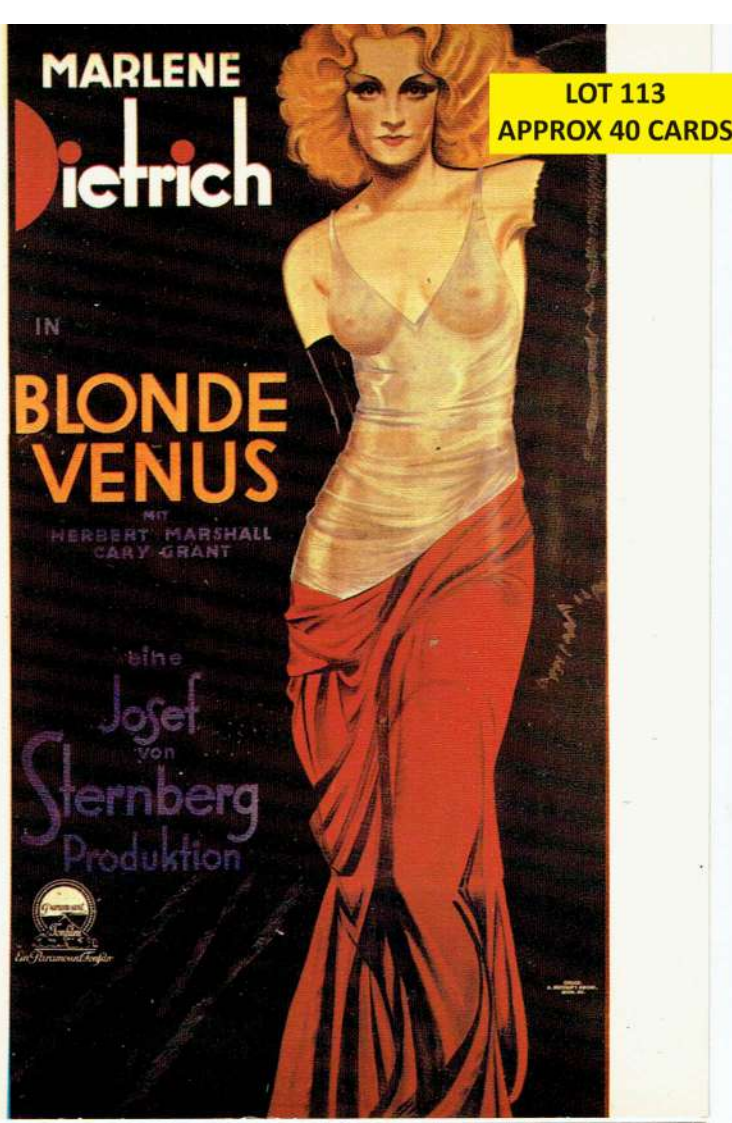
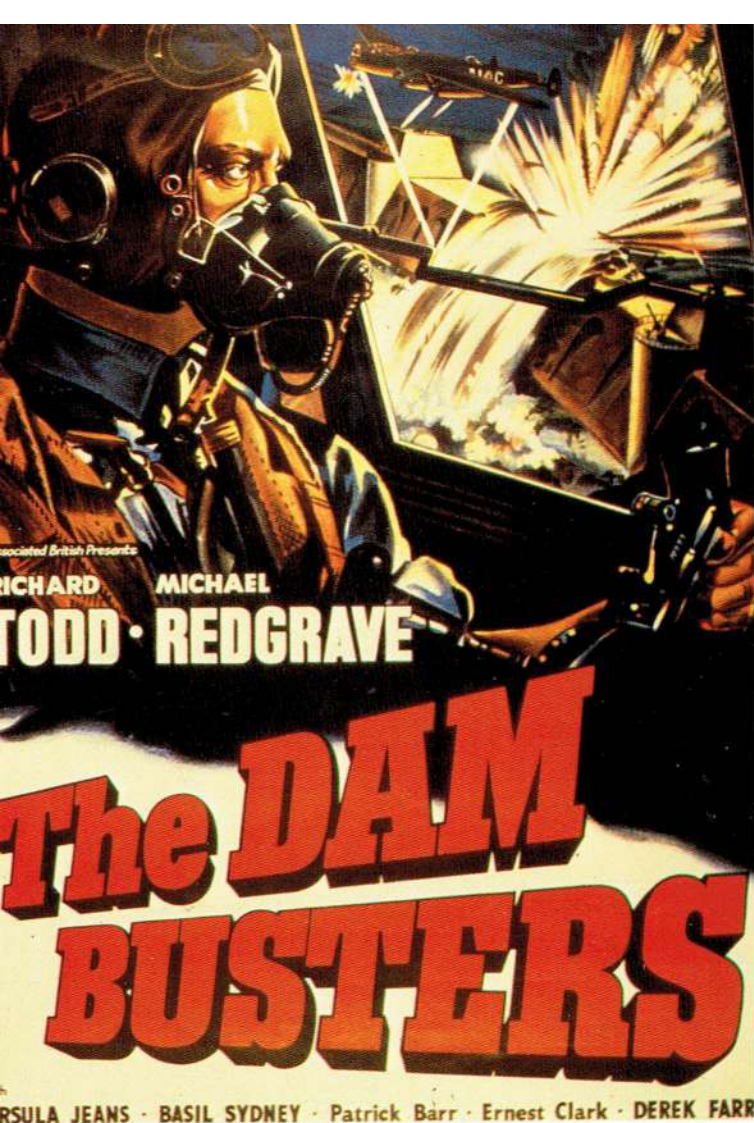


CÔTE BASQUE

BIARRITZ
FRANCE



FLUGTAGE ALTENRHEIN
SAMSTAG u. SONNTAG den 24. u. 25. AUGUST 1929
BEI JEDER WITTERUNG
NUR EINMALIGE BESICHTIGUNG DES GRÖSSTEN FLUGSCHIFFES DER WELT
EXTRAZÜGE, FESTWIRTSCHAFT
VERANSTALTUNG DER OSTSCHWEIZ. AERO-GESELLSCHAFT ST. GALLEN
DO.X SONNTAG, DEN 25. AUG. NACHM.
EXTRA-FLUGVERANSTALTUNGEN
DORNIER NEUESTE LUFTATTRAKTIONEN,
KUNSTFLÜGE, PASSAGIERFLÜGE



Rudolph Valentino
dans

ASTRA PARIS FILMS

L'AMANT ÉTERNEL
(LE FILS DU CHEIK)

HUMPHREY BOGART

LOT 114
APPROX 25 CARDS

TOKIO JOE

ALEXANDER KNOX * FLORENCE MARY * SESSUE HAYAKAWA

DECEA: STUART HEISLER PROD: ROBERT LORD

CEIAD

TYRONE POWER

A YANK IN THE R.A.F.

with **BETTY GRABLE**

JOHN SUTTON
Reginald GARDINER
Produced by **DARRYL F. ZANUCK**
Directed by **HENRY KING**
Associate Producer **LOU EDELMAN**

Let's Go U.S.A. - Help Our Friends

A 20th CENTURY-FOX PICTURE

IN HER ARMS

with **WARNER BAXTER**
ELISSA LANDI
Paul Cavanagh

Oriental pride yields to Parisian kisses in a duel of male might and female charm... Exotic drama of love's sublime cruelty.

Story by **PIERRE FROMDHAL**
Directed by **WILLIAM CAMERON MENZIES** and **KENNETH MacKENNA**

UNDERGROUND

LOT 115
APPROX 100 CARDS



HAMPSTEAD RAILWAY NON-STOP SERVICES

GOLDERS GREEN AND CHARING CROSS IN 16 MINS.

TRAINS LEAVE GOLDERS GREEN		SATURDAYS ONLY	
WEEKDAYS	SATURDAYS ONLY		
a.m.	p.m.		
8 11	12 48		
8 53	1 36		
9 38	2 18		
10 20	3 0		

TRAINS LEAVE CHARING CROSS		SATURDAYS	
MONDAYS TO FRIDAYS	SATURDAYS		
a.m.	p.m.		
5 27	1 5		
6 9	1 53		
6 51	2 35		
7 33	3 17		

Hampstead 3 mins. later.

Tottenham Court Road 2½ mins. later.

ST. JAMES PARK STATION, LONDON, E.C.4.

(S.D. H.38-17.110)

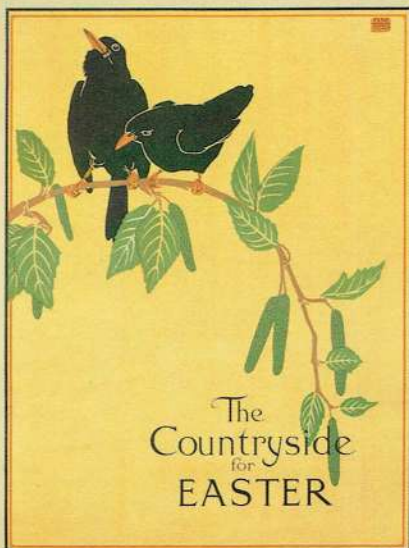
JOHNSON, RAMSAY & CO. LTD., LONDON, E.C.4.



SUMMER OUTINGS BY PRIVATE BUS

RIDE **GENERAL** AND RIDE WELL

Spring hangs her infant blossoms on the trees.
Rocked in the cradle of the western breeze.



The
Countryside
for
EASTER

BY



OR



FARE FROM HERE TO

BROMLEY - - - 3°

BOW ROAD - - - 2°

MANSION HOUSE - 2°

CHARING CROSS - 3°

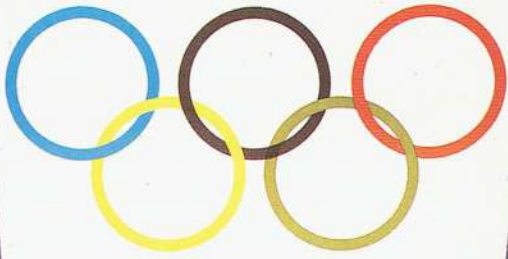
HAMMERSMITH - 4½°



ALL WINNERS

UNDERGROUND

OLYMPIC GAMES



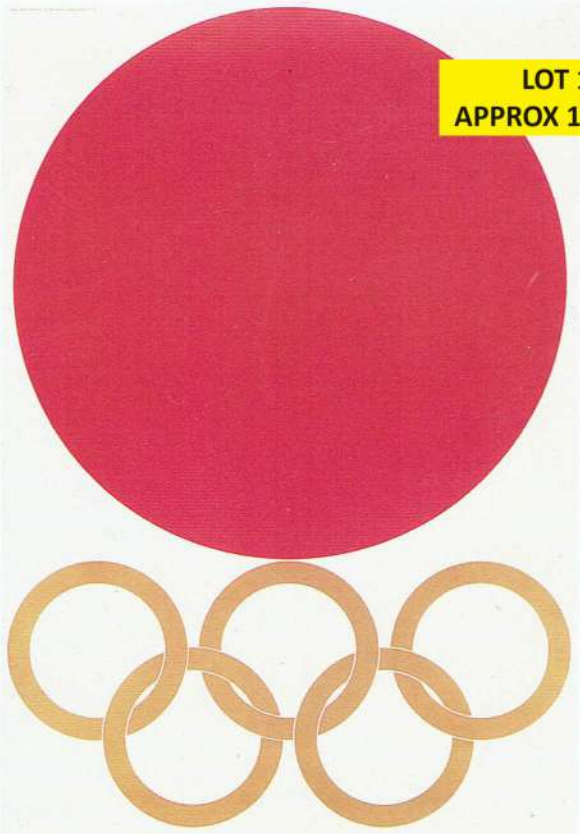
MELBOURNE

22 NOV-8 DEC
1956

RICHARD BECK

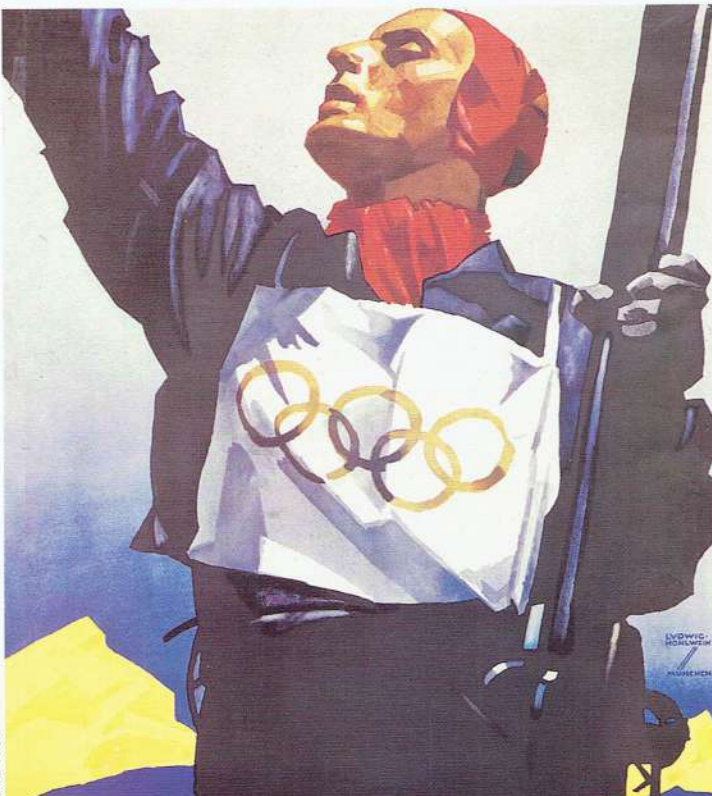
PRINTED IN AUSTRALIA BY CONTAINERS LIMITED, MELBOURNE

LOT 116
APPROX 15 CARDS



TOKYO 1964

© 1987 COMITE INTERNATIONAL OLYMPIQUE LAUSANNE SUISSE



EDUARD
HEDERICH
PROHECHEN

ALLEMAGNE 1936
IV^{ES} JEUX OLYMPIQUES D'HIVER
GARMISCH-PARTENKIRCHEN
DU 6 AU 16 FEVRIER 1936

COMITE D'ORGANISATION DES IV^{ES} JEUX OLYMPIQUES D'HIVER 1936
GARMISCH-PARTENKIRCHEN (BAVIERE)



JEUX OLYMPIQUES D'HIVER
1948 ST MORITZ SUISSE

© 1987 COMITE INTERNATIONAL OLYMPIQUE LAUSANNE SUISSE

SYDNEY-LONDON EMPIRE SERVICES

*SPEED
COMFORT!*



Qantas
IN ASSOCIATION WITH
Empire Airways
BRITISH OVERSEAS AIRWAYS CORPORATION



28

HYDRAVIONS 'EMPIRE' NEUFS
À VITESSE DE 320 KILOMÈTRES À L'HEURE

IMPERIAL AIRWAYS
EUROPE AFRIQUE INDE EXTRÊME ORIENT AUSTRALIE

"K.L.M." ROYAL DUTCH AIR LINES *World's longest air line*



THE FLYING DUTCHMAN
FICTION BECOMES FACT



IT'S SMART TO FLY

BRITISH AIRWAYS

PARIS · GERMANY · DENMARK · SWEDEN



THE MAN WHO CAME TO DINNER



Maggie: BETTE DAVIS
Host: RICHARD TRAVIS
Director: WILLIAM KEIGHLEY
WARNER BROS., 1942



42ND STREET



Pat: GEORGE BRENT
Peggy: RUBY KEELER
Director: LLOYD BACON
WARNER BROS., 1933



THE GIRL FROM MISSOURI



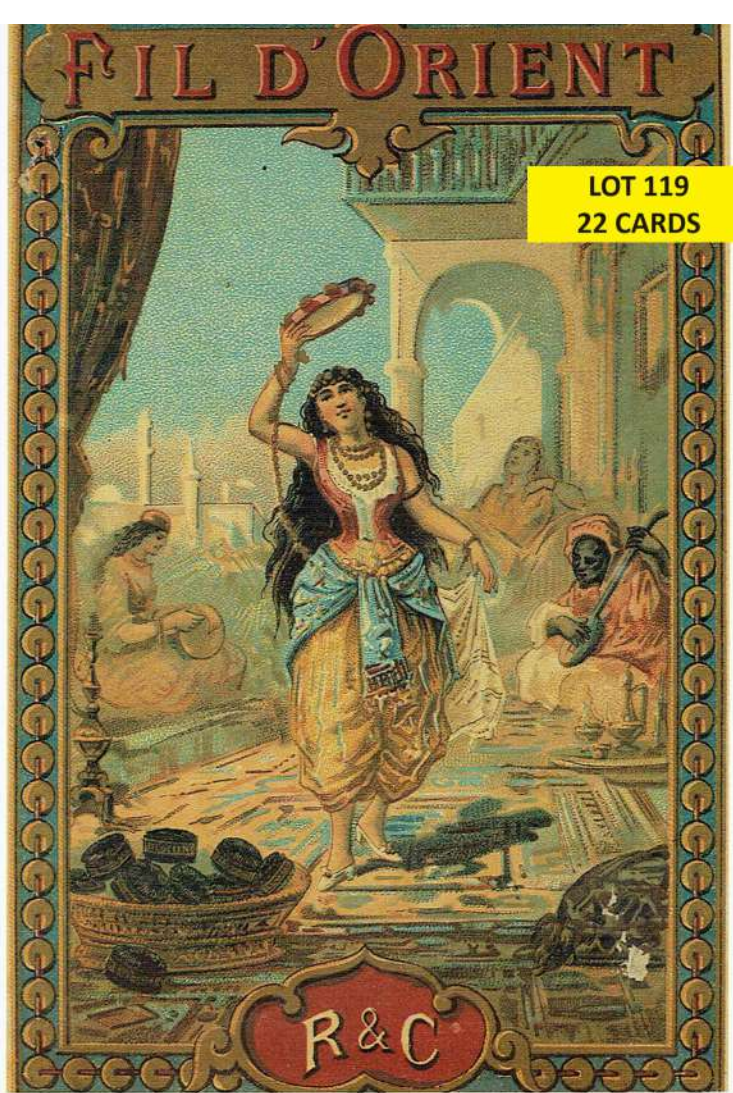
Edith: JEAN HARLOW
Tom: FRANCHOT TONE
Director: JACK CONWAY
MGM, 1934



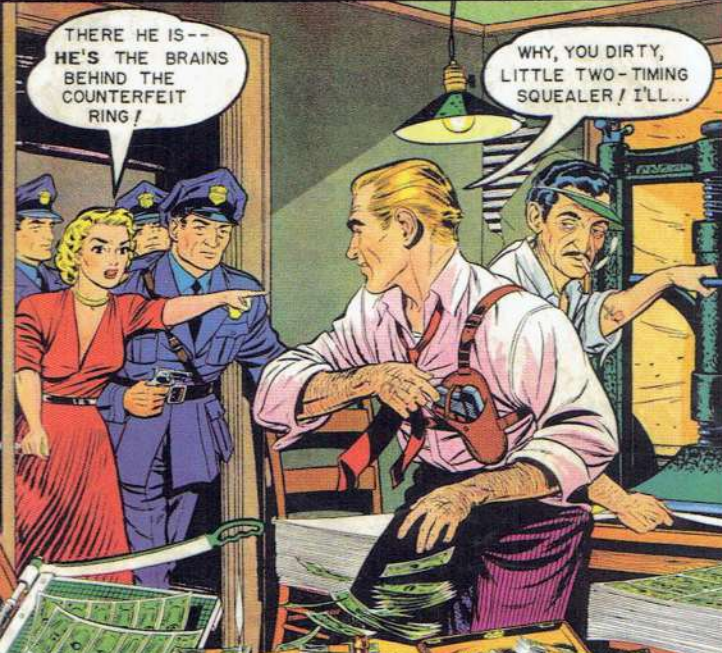
INSPIRATION



Yvonne: GRETA GARBO
André: ROBERT MONTGOMERY
Director: CLARENCE BROWN
MGM, 1931

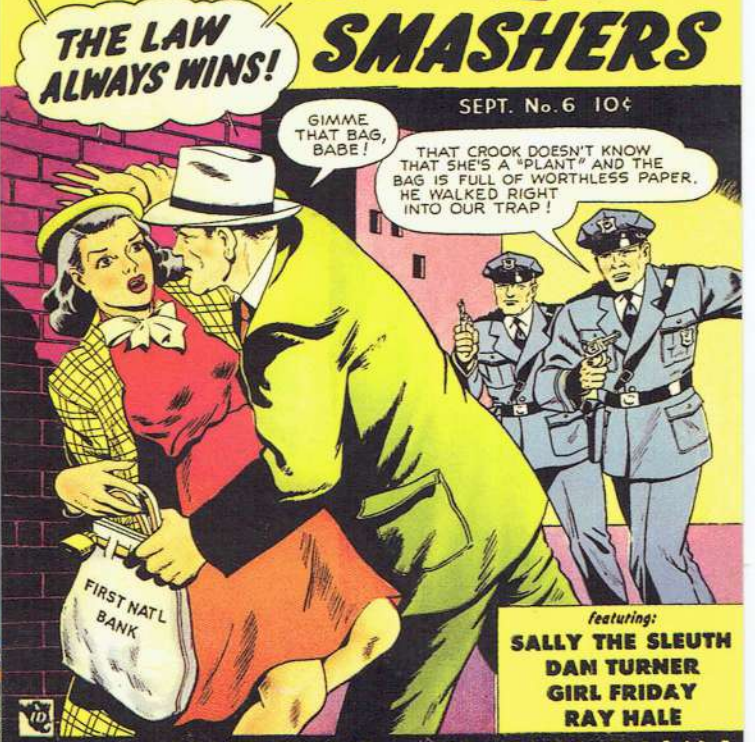


CRIME MUST PAY THE PENALTY!
PENALTY!
 TRUE CASES OF ACTUAL CRIMES
 AUGUST 10c NO. 27



CRIME
SMASHERS
 THE LAW ALWAYS WINS!
 SEPT. No. 6 10c

LOT 120
 31 CARDS



CRIME CAN'T PAY — IN ANY WAY!

WAR BATTLES
 EVER FEEL TRAPPED IN A CIRCLE OF NO ESCAPE? EVER FEEL WALLS PUSH IN CLOSER AND CLOSER? YOU WILL IN...
RING OF FIRE!
 SHOCKING TALES OF COMBAT!
 No. 8 OCT.



WAR HEROES
WAR HEROES
 MAY 10c

