

# THE LURE OF DISTANT LANDS

FAR AWAY PLACES WITH STRANGE SOUNDING NAMES IN THE EARLY 20th CENTURY.



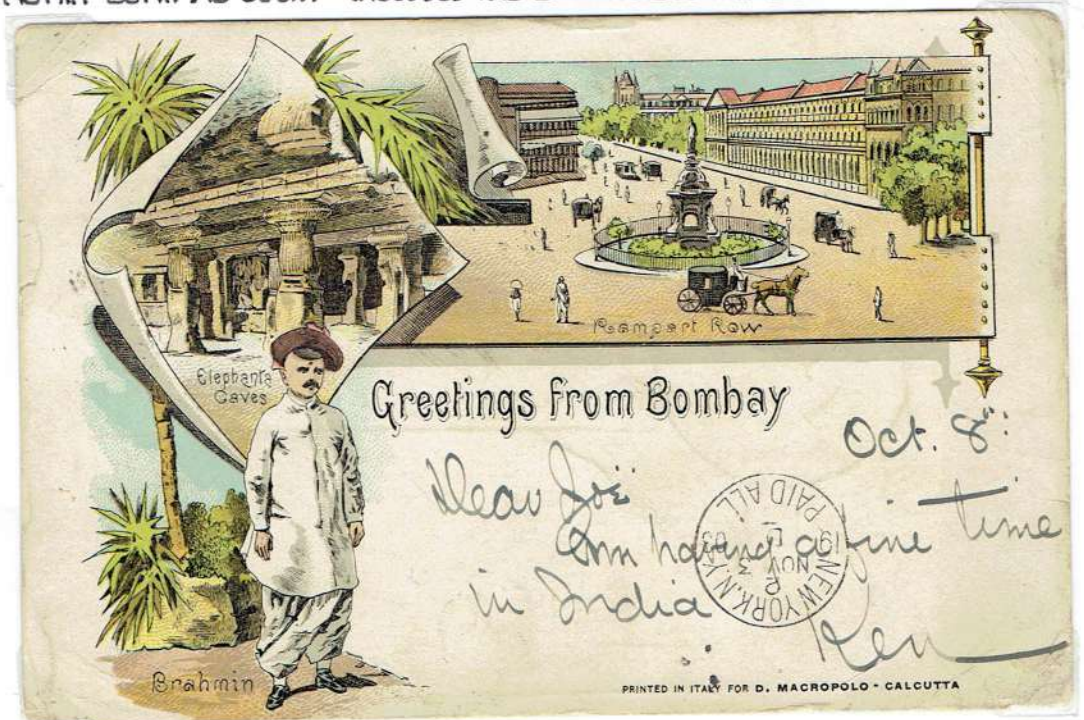
Group of Native Children

Pub: UNKNOWN (PROBELY INDIAN OR CEYLANESE.)

- 1 AFRICA ~ SUB-SAHARAN.
- 2 ASIA INCLUDING THE SUB-CONTINANT.
- 3 ARAB LANDS MIDDLE EAST AND NORTH AFRICA.
- 4 OCEANIA ~ AUSTRALASIA - PACIFIC ISLANDS
- 5 THE AMERICA'S ~ NORTH-CENTRAL-SOUTH ~ INCLUDES THE CARIBBEAN SEA.
- 6 EUROPE ~



IN THE LATE 19th AND EARLY 20th CENTURY THE SLAVIC LANDS TO THE EAST WERE STILL EXOTIC TO WEST EUROPEAN TRAVELERS



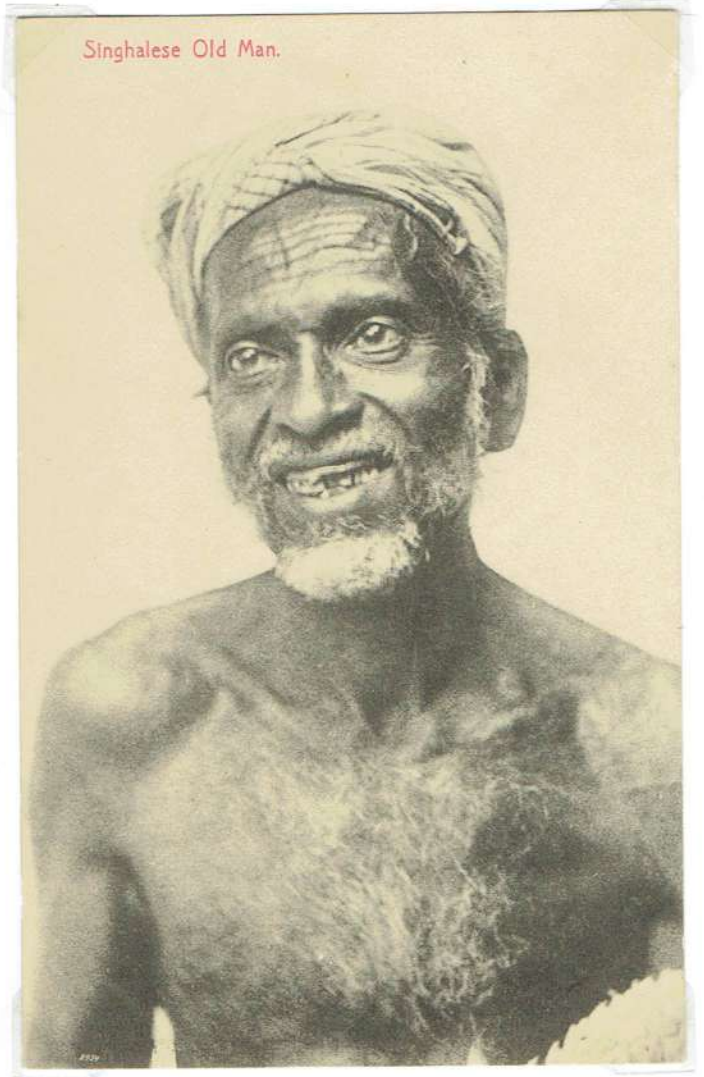
POSTMARKED BOMBAY 9 OCTOBER 1903. POSTMARKED NEW YORK CITY 3 NOVEMBER 1903. PM SEATTLE 9 NOVEMBER 1903.

Pub: PRINTED IN ITALY FOR D. MACROPOLO - CALCUTTA.





A VILLAGE BEAUTY - CEYLON  
 ROB. PLATÉ & Co. COLOMBO



Singhalese Old Man.

SINGHALESE OLD MAN  
 ROB. PLATÉ & Co. COLOMBO.

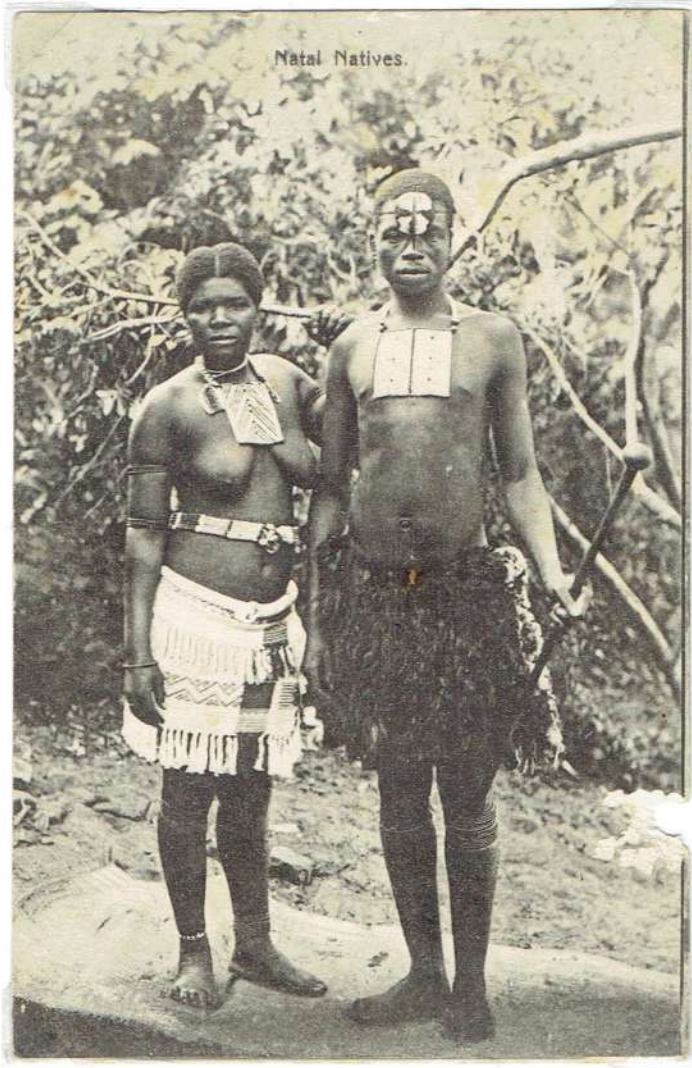


NO. 20 SINGHALESE WOMEN IN A RICKSHAW COLOMBO



# UNION OF SOUTH AFRICA

LOT 11



Natal Natives.



MR J H BALMER'S KAFFIR BOYS



Rickshas and Pullers, South Africa

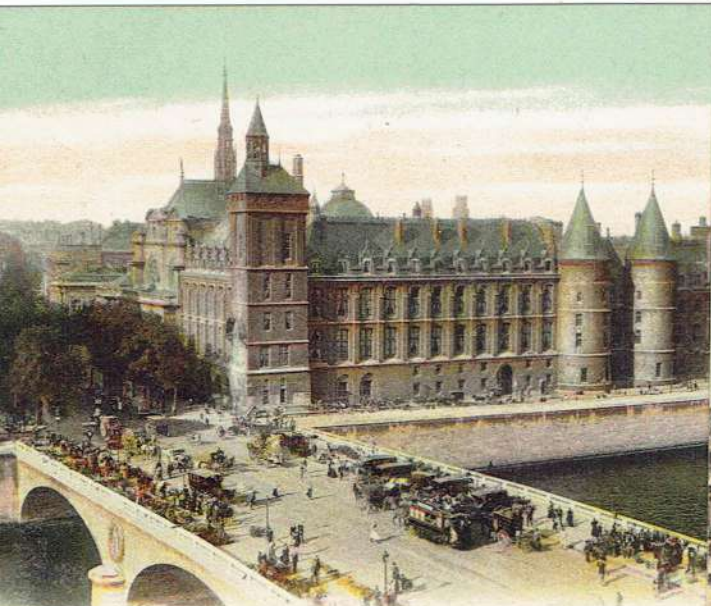
500-423

RICKSHAS *sic* AND PULLERS SOUTH AFRICA

PUB: VALENTINE A. R. P.O. BOX 382 DURBAN

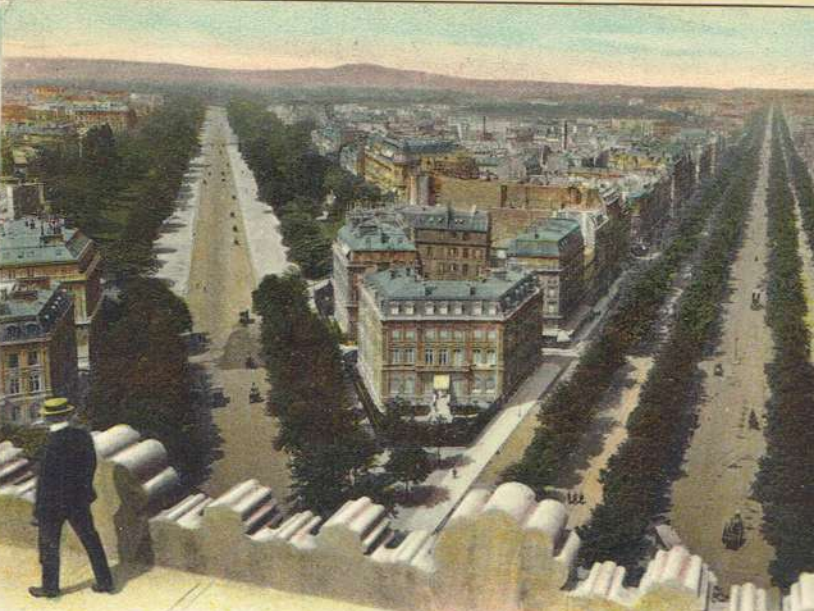
do





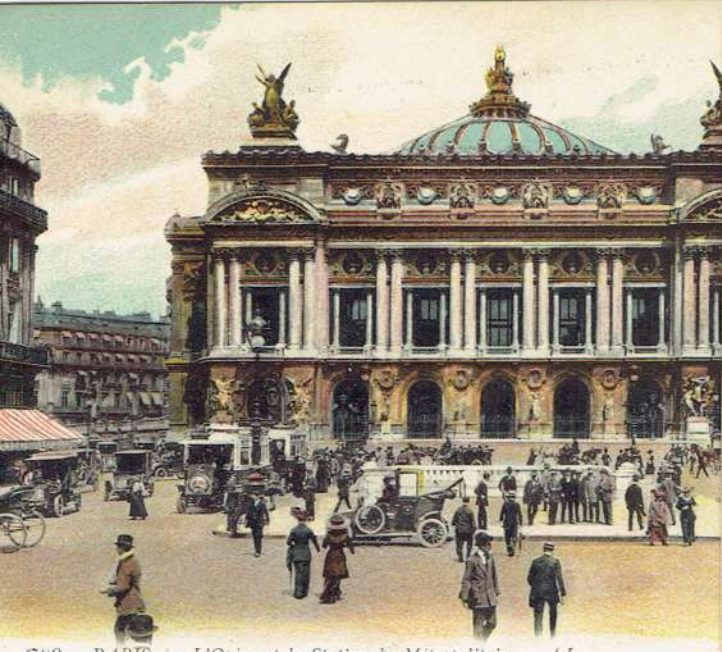
571 PARIS (V<sup>e</sup>). — La Conciergerie. — LL.

1172 PARIS. — La Place Vendôme et la Colonne. — LL.



29 PARIS (VIII<sup>e</sup>). — Le Petit Palais. — LL.

1093 PARIS. — Panorama pris de l'Arc de Triomphe sur les Avenues du Bois et de la G



780 PARIS. — L'Opéra et la Station du Métropolitain. — LL.

159 PARIS (VI<sup>e</sup>). — Le Jardin du Luxe

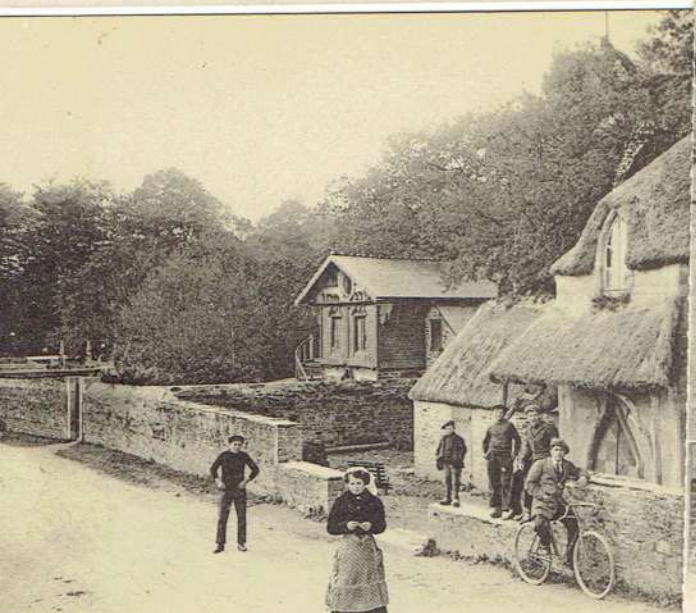




Visé Paris n° 913 919 HAM. — Route de Noyon et Pont sur le Canal.  
Road of Noyon and bridge on



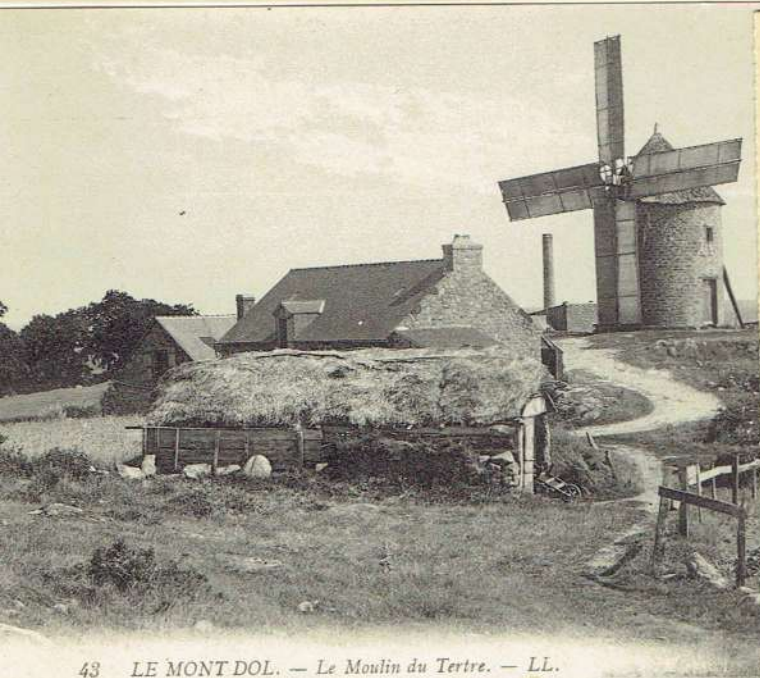
837 GUERRE 1914-1916. — Bataille de la Somme. — Piece de 194 sur voie ferrée.  
Gun of 194 on the railway.  
Visé Paris n° 837



77 MORLAIX. — La Maison de Paille. — LL



80 ARMENTIÈRES. — Le Pont de Flandre. — LL.



43 LE MONT DOL. — Le Moulin du Tertre. — LL.

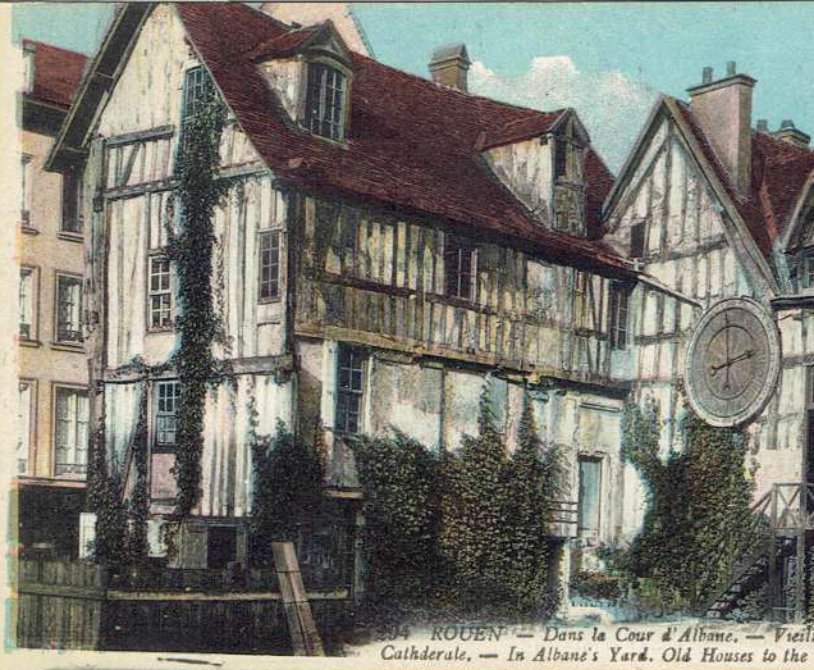


157 LE MONT SAINT-MICHEL. — Les Voitures de Genêts. — LL.





93 ROUEN. — Ensemble de Bon-Secours et du Monument de Jeanne-d'Arc. — LL



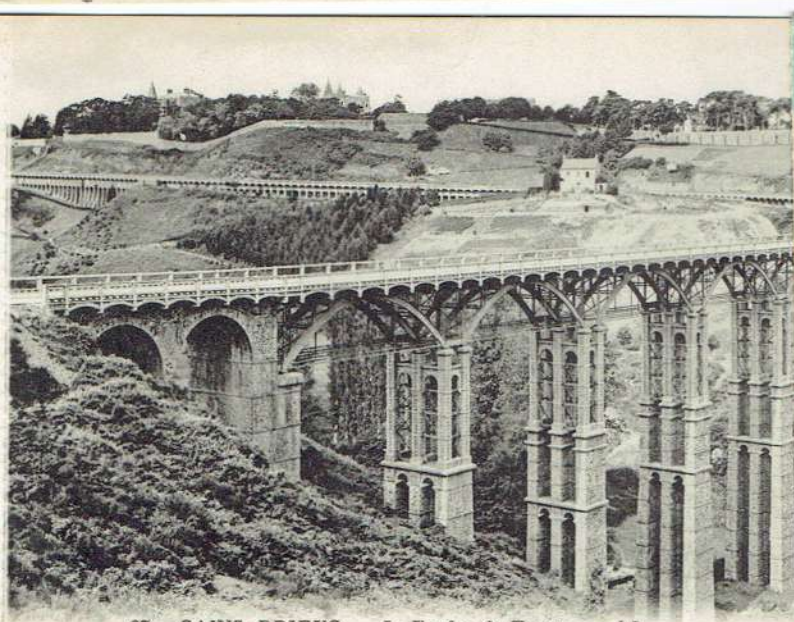
94 ROUEN. — Dans la Cour d'Albane. — Vieux Cathedrale. — In Albane's Yard. Old Houses to the



14 LES BORDS DE LA RANCE. — La Richardais. — LL.



141 ROUEN. — La Rue Jeanne d'Arc. — Joane of Arc Street. — LL.



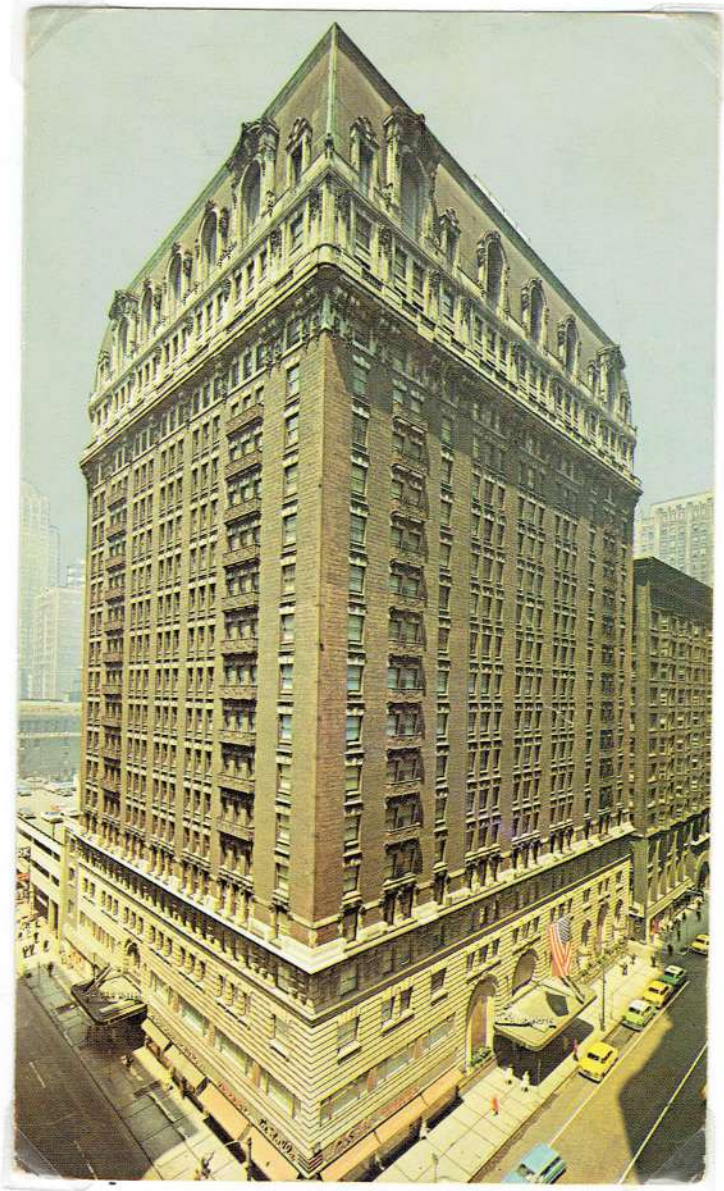
97 SAINI-BRIEUC. — Le Viaduc de Toupin. — LL



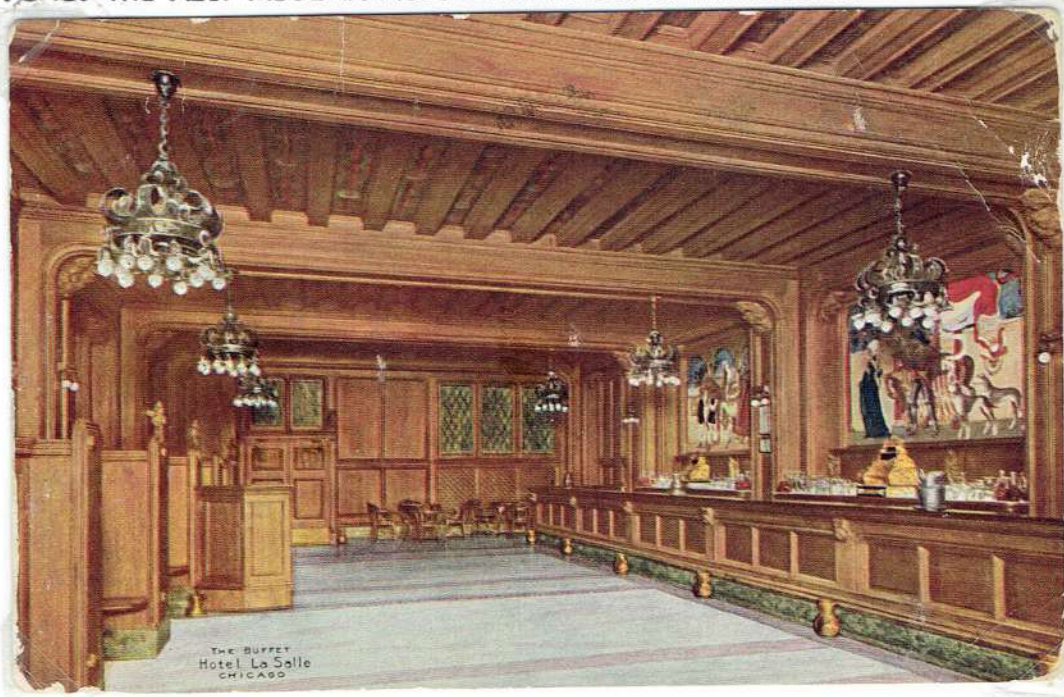
ROUEN. — La Côte Sainte-Catherine. — LL

Vued Paris n 430





COMPLETED IN 1909 UNDER THE ARCHITECTURAL DIRECTION OF HOLABIRD AND ROCHE, ITS TWENTY-TWO STOREYS OFFERED THE MOST MODERN ACCOMMODATION TO TRAVELERS



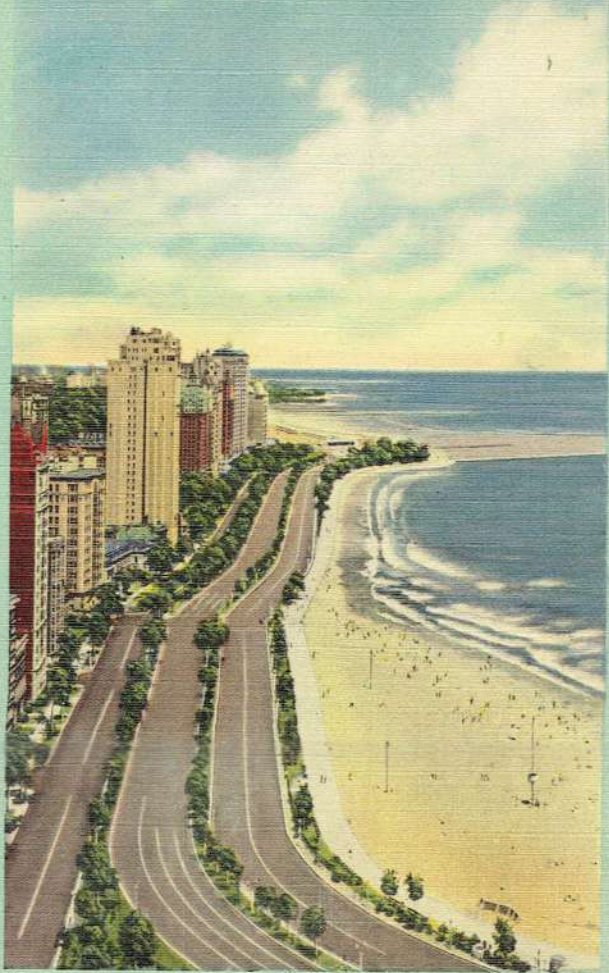


OAK STREET BEACH VIEW SOUTH 1922. ~ LAKE SHORE DRIVE

LOT 13



View of Oak Street Beach, Lake Shore Drive and Drake Hotel



4 Chicago 74249



THE CHICAGO TRIBUNE TOWER ON MICHIGAN AVENUE

437.

THE TRIBUNE TOWER, CHICAGO.

97



# 220

THE TRIBUNE TOWER AND MICHIGAN AVENUE BRIDGE, CHICAGO

LOT 13



329.

MICHIGAN BOULEVARD, LOOKING NORTH, CHICAGO.





THE MISSISSIPPI RIVER — GATEWAY TO THE WEST!

LOT 14



ST. LOUIS WATERFRONT — BARGES PASSING UNDER THE EADS BRIDGE.



" GREAT VOLUMES OF THE BLACKEST SMOKE ARE ROLLING AND TUMBLING OUT OF THE CHIMNEYS —  
— A HUSBANDED GRANDEUR CREATED WITH A BIT OF PITCH-PINE JUST BEFORE ARRIVING AT  
A TOWN " — FROM "LIFE ON THE MISSISSIPPI" BY MARK TWAIN.

db



IT WAS THE ARRIVAL OF THE RAILWAY IN 1887 THAT SPURRED THE GROWTH OF **AMARILLO**, NOW A THRIVING INDUSTRIAL TOWN. ROUTE 66 RAN STRAIGHT THROUGH THE CENTRE OF TOWN.

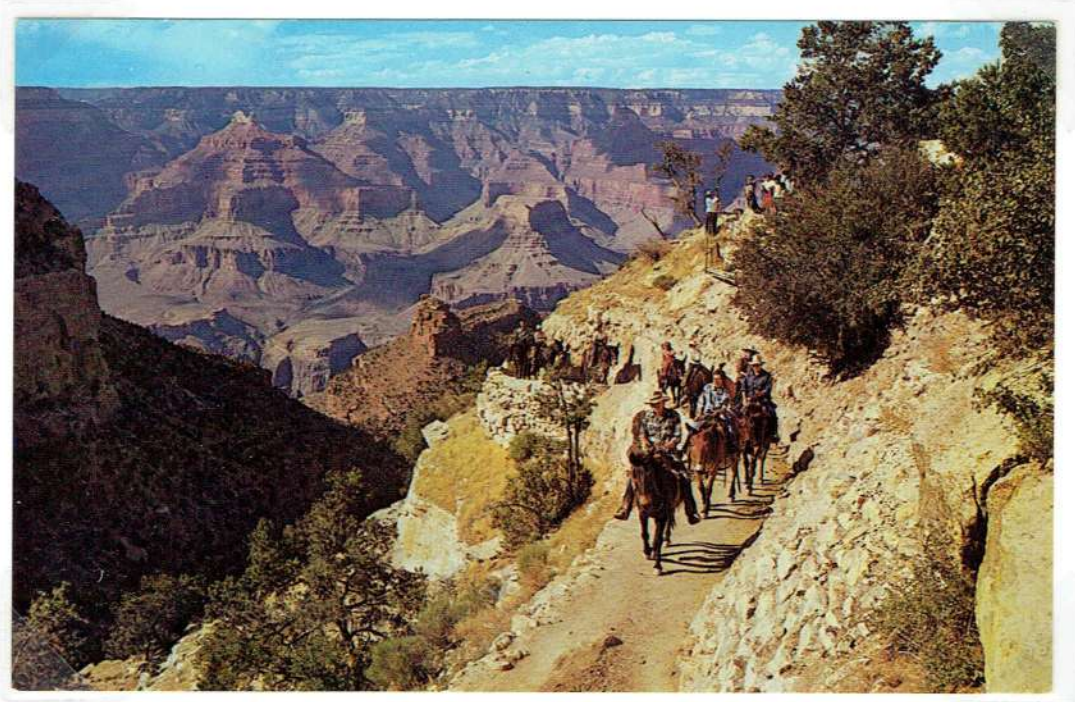
LOT 14



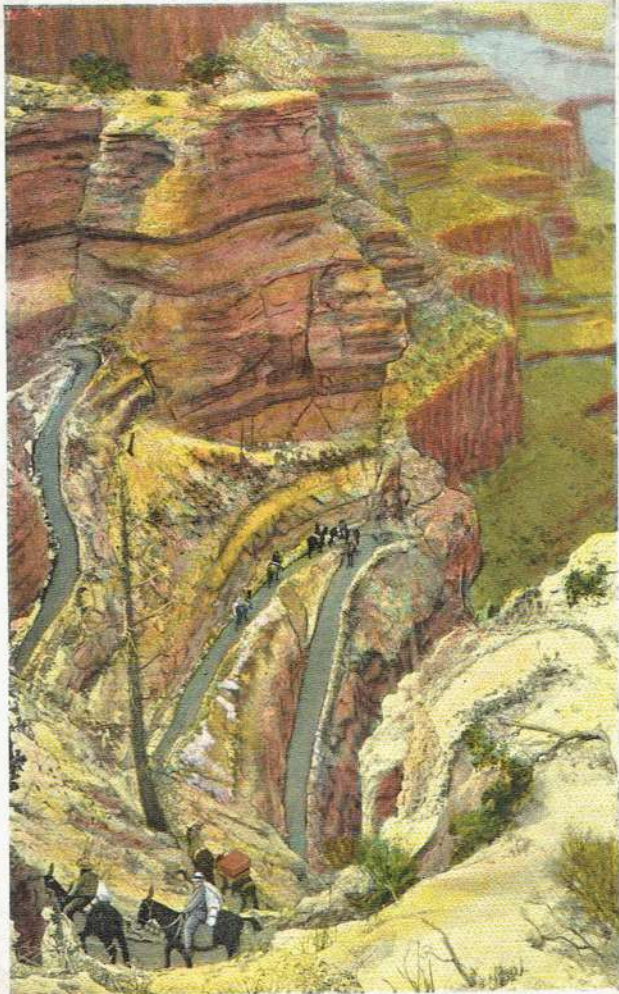
ROUTE 66 AT FILLMORE STREET WHERE THE HIGHWAY INTERSECTS HIGHWAY 87.



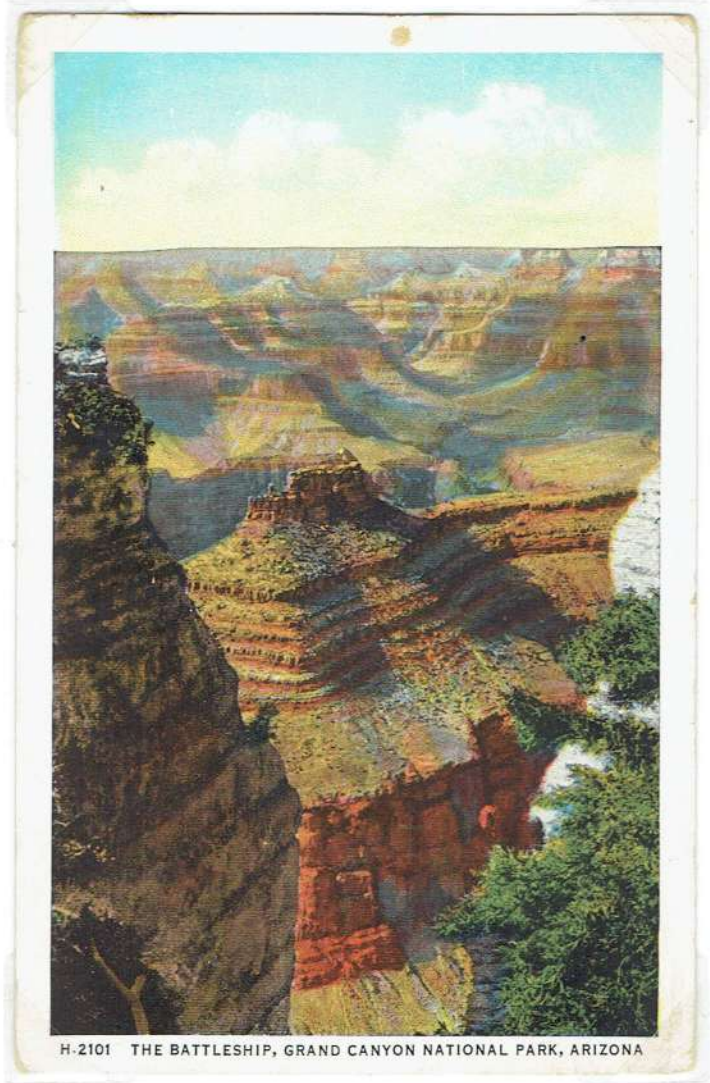




H-3988 TRAIL PARTY BELOW YAKI POINT ON KAIBAB TRAIL.



GRAND CANYON NATIONAL PARK, ARIZONA

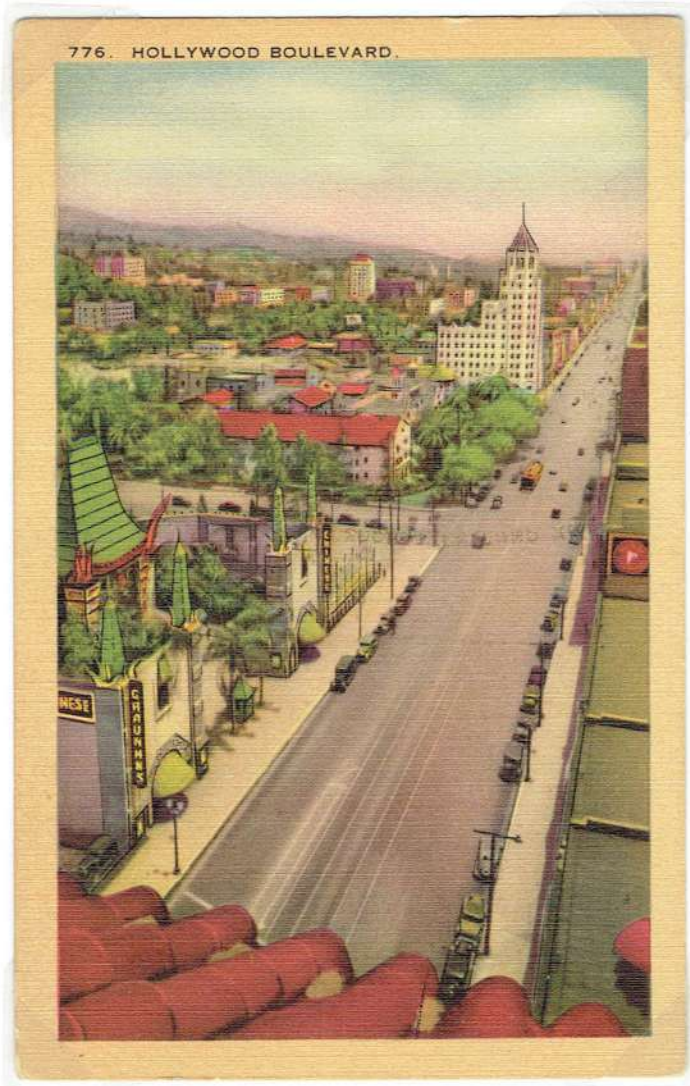
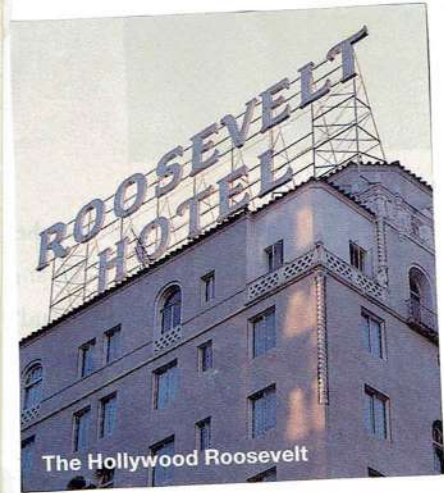
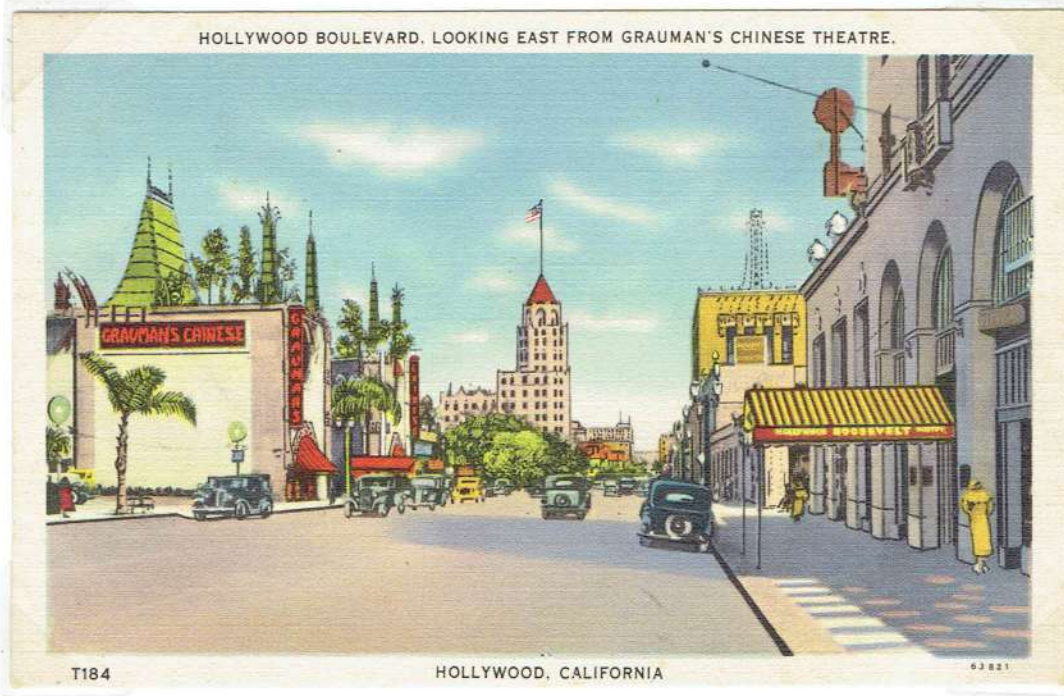


H-2101 THE BATTLESHIP, GRAND CANYON NATIONAL PARK, ARIZONA



# HOLLYWOOD BOULEVARD — LOOKING EAST FROM ORANGE DRIVE

LOT 15



## THE HOTEL ROOSEVELT

7000 HOLLYWOOD BOULEVARD

BUILT IN 1927 ACROSS THE STREET FROM GRAUMAN'S (NOW MANN'S) CHINESE THEATRE, THIS WAS ONCE A LANDMARK AND A HAVEN FOR STARS (THE MARILYN MONROE AND GABLE AND LOMBARD SUITES ARE SO CALLED FOR THE ACTORS WHO SLEPT THERE). MOST OF THE CELEBRITIES YOU'D FIND TODAY WOULD BE IN THE CINEBRILL, THE HOTEL'S CABARET

THE HOTEL IS NAMED FOR TEDDY ROOSEVELT



"YAMASHIRO," THE HOLLYWOOD HOME OF ORIENTAL ART IMPORTERS, THE BROTHERS' ADOLPH AND EUGENE BERNHEIMER. COMPLETED IN 1914 IT INSTANTLY BECAME A HOLLYWOOD SHOWPIECE.

LOT 15



AFTER THE CRASH OF '29 THE HOUSE PASSED THROUGH A SUCCESSION OF OWNERS UNTIL IT WAS LITTLE MORE THAN A SHELL.



THEN TOM GLOVER SR. BUYING THE HOUSE IN 1949, RESTORED IT AND OPENED THE GARDENS TO THE PUBLIC. ITS NOW A RESTAURANT AND IS ALMOST HIDDEN FROM VIEW BY THE HOLLYWOOD SKYLINE. THESE POSTCARDS DATE FROM THE YEAR OF THE RESTORATION.

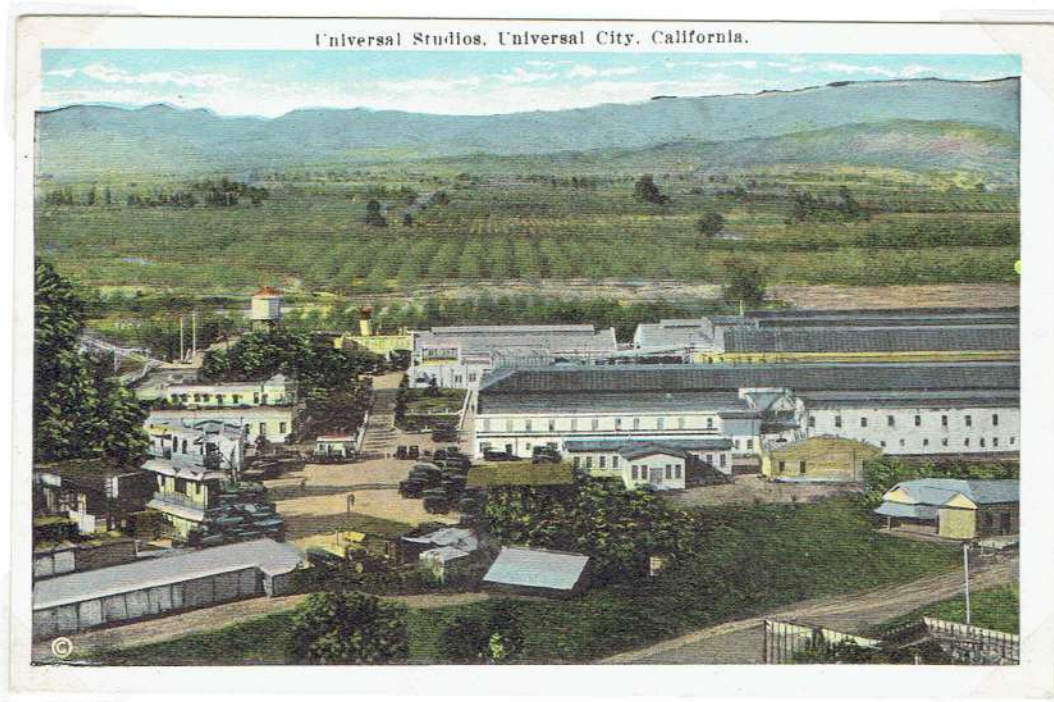
db



THE STUDIOS THAT MADE HOLLYWOOD.

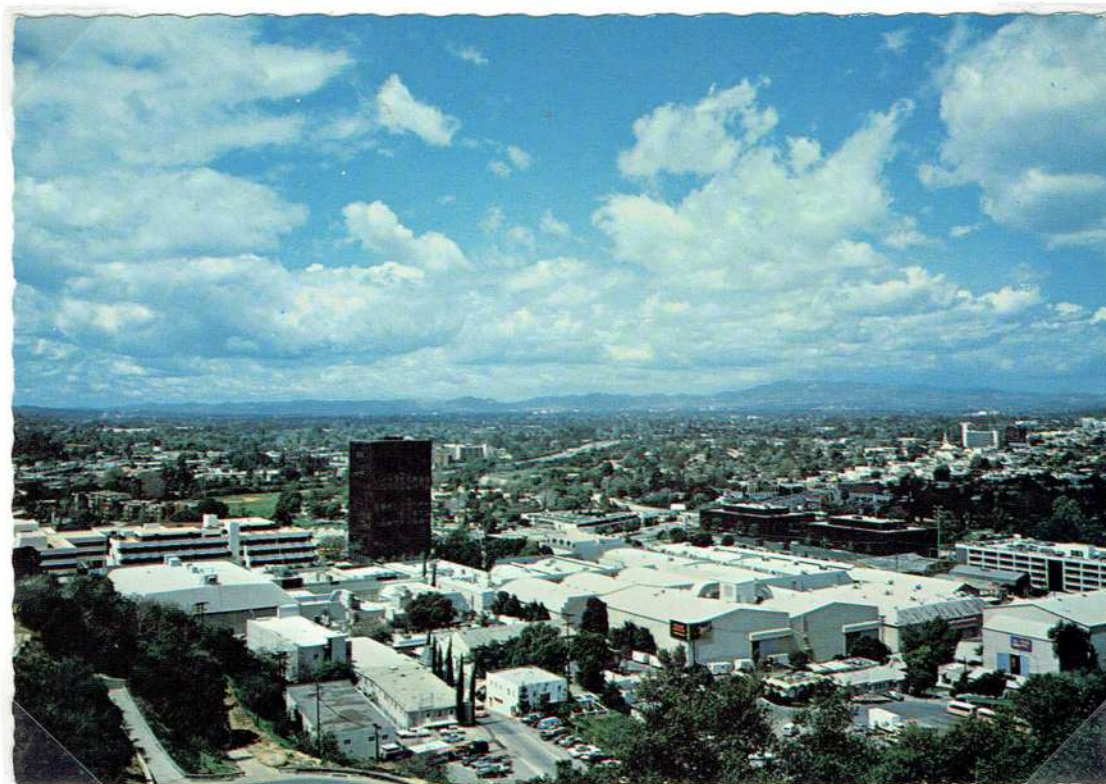
# UNIVERSAL

LOT 15



1922

FORMED IN MAY 1912, ORIGINALLY AT SUNSET AND BOWEN ~ MOVED OVER THE CAHUENGA PASS TO THE SAN FERNANDO VALLEY IN 1915 TO FOUND UNIVERSAL CITY.



1982

ONE OF THE FEW STUDIOS TO ALLOW VISITORS AS A MATTER OF POLICY





REMEMBERING \_\_\_\_\_

# MAIN STREET · U.S.A.

LOT 16

AND

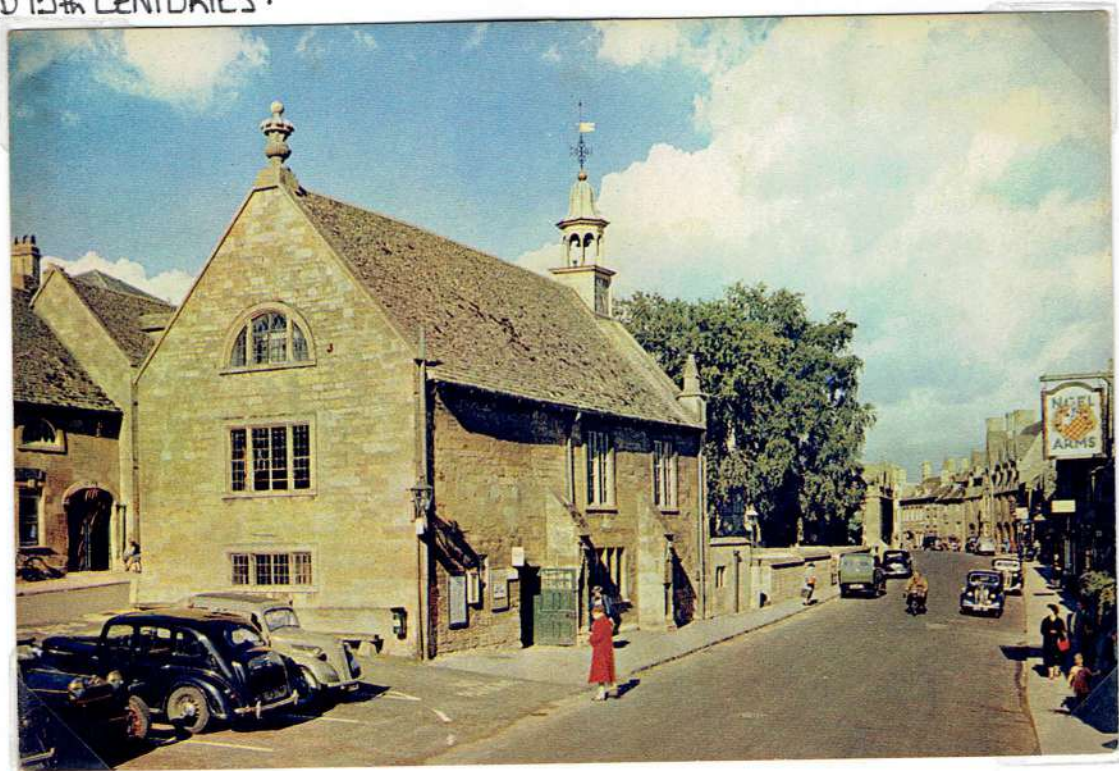
# HIGH STREET · BRITAIN.



High Street  
Chipping Campden

PUB: SALMON

CHIPPING CAMPDEN HIGH STREET — A WONDERFUL STREET OF OLD BUILDINGS MANY DATING FROM THE 14<sup>th</sup> AND 15<sup>th</sup> CENTURIES.



PUB: J. ARTHUR DIXON





# INVERNESS

SCOTLAND.

LOT 16



POB: VALENTINE 'CARBO-COLOR  
N° A 9183

BETWEEN LOCH NESS AND THE COLD NORTH SEA LIES INVERNESS, NOW DUBBED CAPITOL OF THE HIGHLANDS. SOUTH AND EAST IS A LAND OF HIGH MOUNTAINS AND DEEP GLENS, GLAMOROUS SKI-RESORTS AND BLEAK BATTLEFIELDS — AMONG THEM COLLODEN WHERE BONNIE PRINCE CHARLIE WAS FINALLY DEFEATED.



POB: VALENTINE N° B.5133.



# OXFORD

OXFORDSHIRE



Pub: PHOTOCROME CO. LTD.  
NO 6A136

68





# THE PEAK RAILCARS - VICTORIA PEAK.

LOT 17



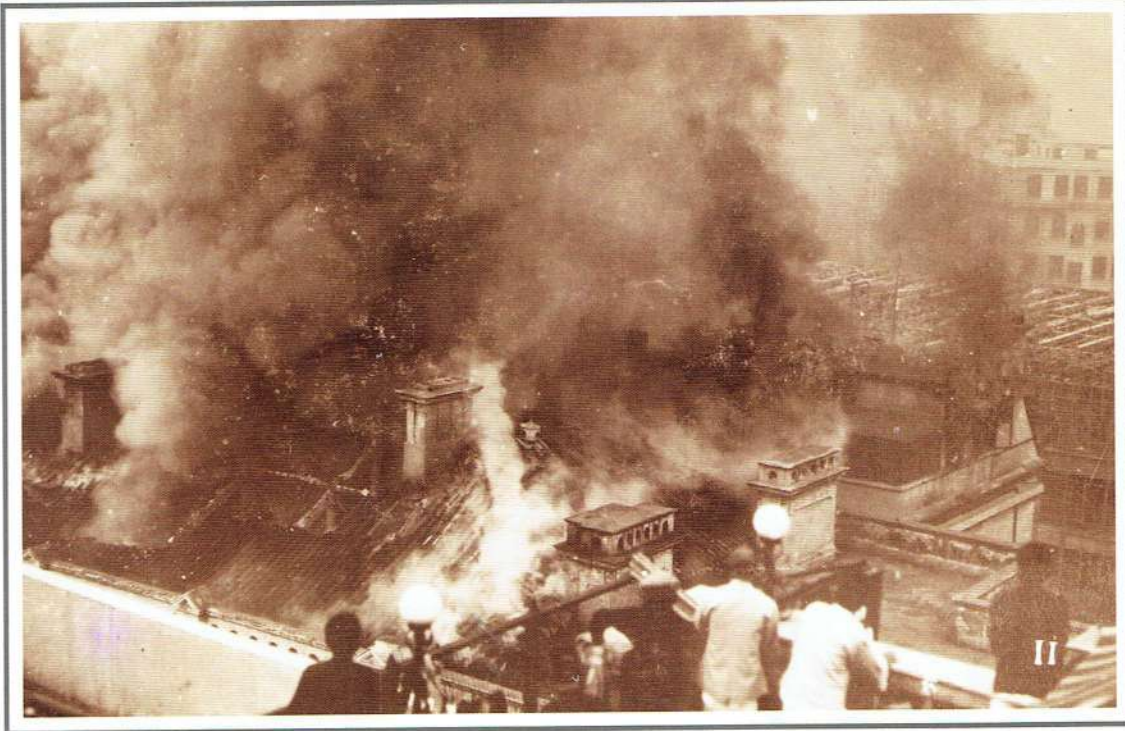
THE SPECTACULAR VIEW OF THE HARBOUR STRETCHING OUT FAR BELOW WAS ONCE STRICTLY FOR THE PRIVILEGED: THE PEAK RESERVATION ORDER OF 1904 RESTRICTED RESIDENCE ON THE PEAK TO EUROPEANS, EXCEPT FOR CHINESE EXEMPTED BY THE GOVERNOR. IN PRACTICE THIS ONLY HAPPENED ON ONE OCCASION — FOR MILLIONAIRE COMPRAADOR SIR ROBERT HO TUNG.



THE PEAK TRAM 1900 WITH UNION CHURCH ON RIGHT AND ST. JOSEPH'S CHURCH ON LEFT



5-7



一九二六年元旦香港酒店大火  
Hong Kong Hotel on fire on the New Year's Day of 1926

5-8



上圖：一九二六年元旦駐港英國海軍正協助撲滅香港酒店大火  
Up: British Naval helped in fighting the fire spectators.  
下圖：大火過後，酒店內滿目蒼痍  
Down: Damage inside the Hotel after the fire.



THE POST OFFICE WAS BUILT IN 1903 ON THE CORNER OF FEDDER STREET AND DES VOEUX ROAD, VICTORIA.

LOT 17



THE POST OFFICE WAS DEMOLISHED IN 1976 TO MAKE WAY FOR A TOWER BLOCK ABOVE THE CENTRAL M.P.T. STATION





THE ORIENT EXPRESS WAS THE WORLD'S MOST FABULOUS TRAIN. IN ITS HEYDAY, BETWEEN THE 1880s AND THE 1930s, IT WAS THE MOST LUXURIOUS WAY FOR THE RICH AND FAMOUS TO TRAVEL ACROSS EUROPE — IT HAD TWO MAIN ATTRACTIONS —

LOT 18

FIRST WAS THE MAGIC AND MYSTERY OF THE FINAL NAME ON THE DEPARTURE BOARD — CONSTANTINOPLÉ — THE GATEWAY TO THE ORIENT. SECOND WAS THE NO-EXPENSE-SPARED LUXURY OF THE ACCOMMODATION AND FOOD.

THE FIRST ORIENT EXPRESS LEFT GARE DE L'EST IN PARIS ON 4 OCTOBER 1883.

C<sup>ie</sup> INTERNATIONALE DES WAGONS-LITS & DES GRANDS EXPRESS EUROPÉENS  
 London-Chatam-Dover Railway, South Eastern Railway  
 CHEMINS DE FER DU NORD & DE L'EST DE FRANCE

**LONDRES · PARIS · CONSTANTINOPLÉ**

Depart tous les Jours  
 DE LONDRES à 10h PARIS pour VIENNE  
 Le Dimanche & le Mercredi  
 Pour CONSTANTINOPLÉ  
 Le Lundi & le Vendredi  
 Pour BUKAREST

SERVICE RAPIDE  
 Sans Changement de Voitures  
**SANS PASSEPORT**

FAST TRAVELLING  
 Without any Change of Carriages  
**WITHOUT PASSPORT**  
 BETWEEN

The Trains Leave  
 LONDON & PARIS early for VIENNA  
 Sunday & Wednesday Only  
 For CONSTANTINOPLÉ  
 On Monday & Friday  
 For BUKAREST

**PARIS · MUNICH · VIENNE · PESTH · BUKAREST · BELGRADE & CONSTANTINOPLÉ**

**ORIENT EXPRESS**

LONDRES - PARIS - VIENNE	
Train	Wagon
1 <sup>er</sup> Class	2 <sup>e</sup> Class
11:15	11:15
11:15	11:15
11:15	11:15

PARIS - CONSTANTINOPLÉ	
Train	Wagon
1 <sup>er</sup> Class	2 <sup>e</sup> Class
11:15	11:15
11:15	11:15
11:15	11:15

PARIS - BUKAREST	
Train	Wagon
1 <sup>er</sup> Class	2 <sup>e</sup> Class
11:15	11:15
11:15	11:15
11:15	11:15





1932  
Milan Station

17  
LOT 18





THE ORIENT EXPRESS ——— TRAIN FERRY

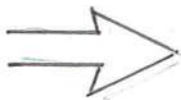
LOT 18

*Revue*



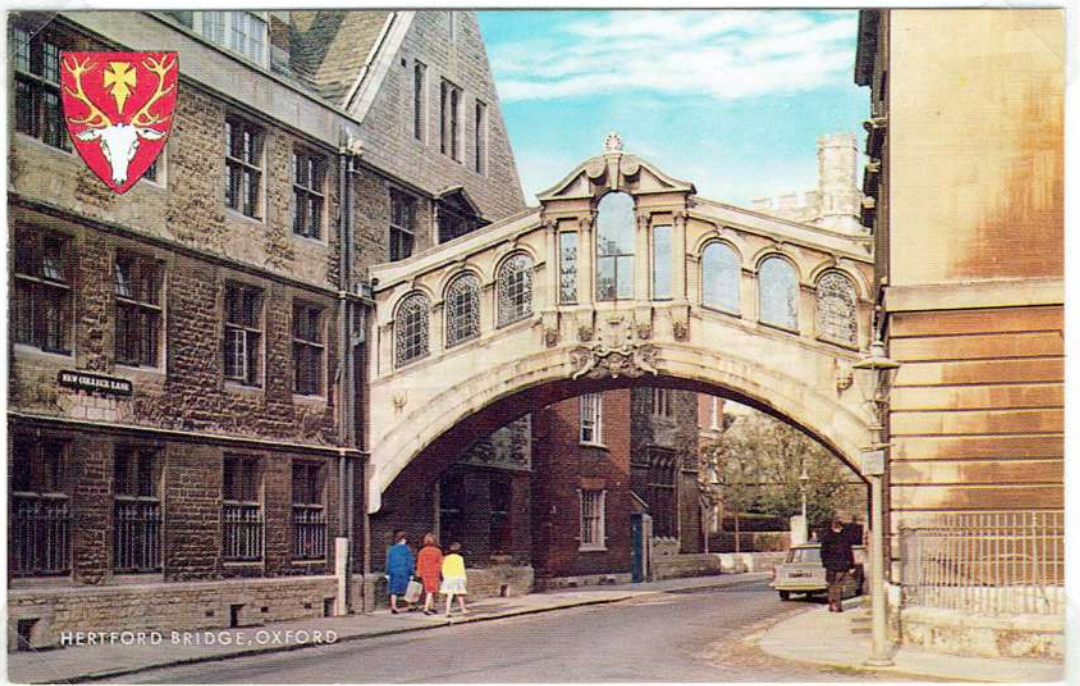
THE DOVER - DUNKERQUE TRAIN-FERRY,  
LINKING ENGLAND WITH FRANCE AND THE  
CONTINENT, CAME INTO SERVICE IN 1936.

IT CARRIED THE CARRIAGES OF THE  
TRAIN SERVICE BETWEEN LONDON, PARIS,  
AND BRUSSELS, AS WELL AS THE THROUGH  
WAGONS-LITS COACHES OF THE ORIENT  
EXPRESS .





PONT DEI SOSPIRI  
THE BRIDGE OF SIGHS  
VENICE, ITALY



HERTFORD BRIDGE ~ OXFORD · ENGLAND .

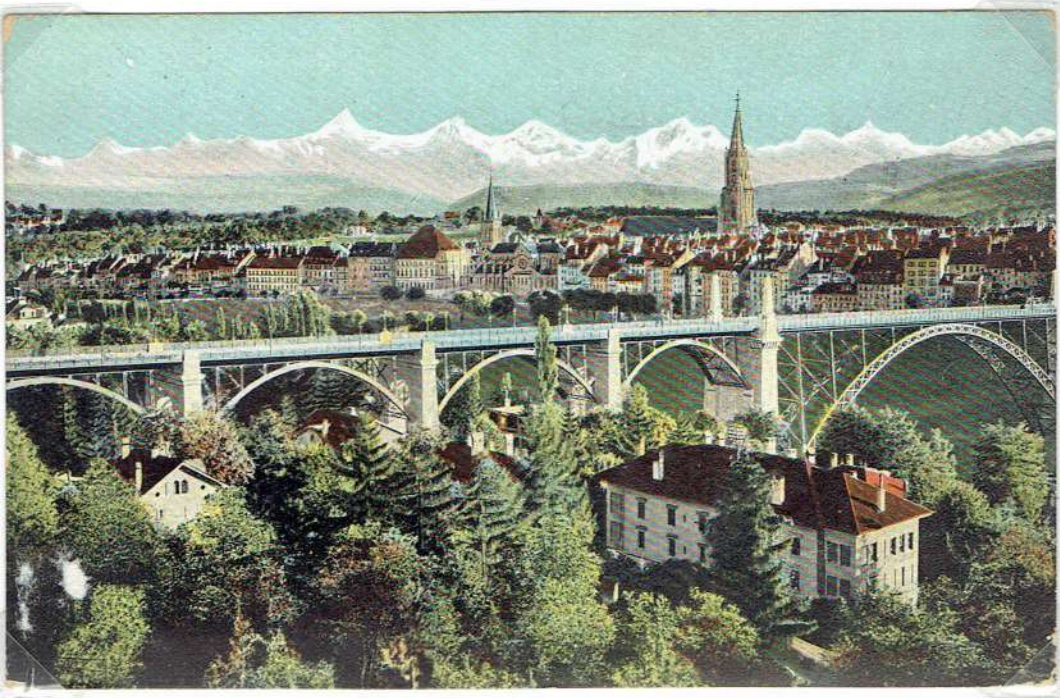
Handwritten mark or signature.



KNIGHTWICK BRIDGE  
WORSTERSHIRE  
ENGLAND



Knightwick Bridge.



BERN  
SWITZERLAND

BETTWS  
WALES  
WATERLOO BRIDGE

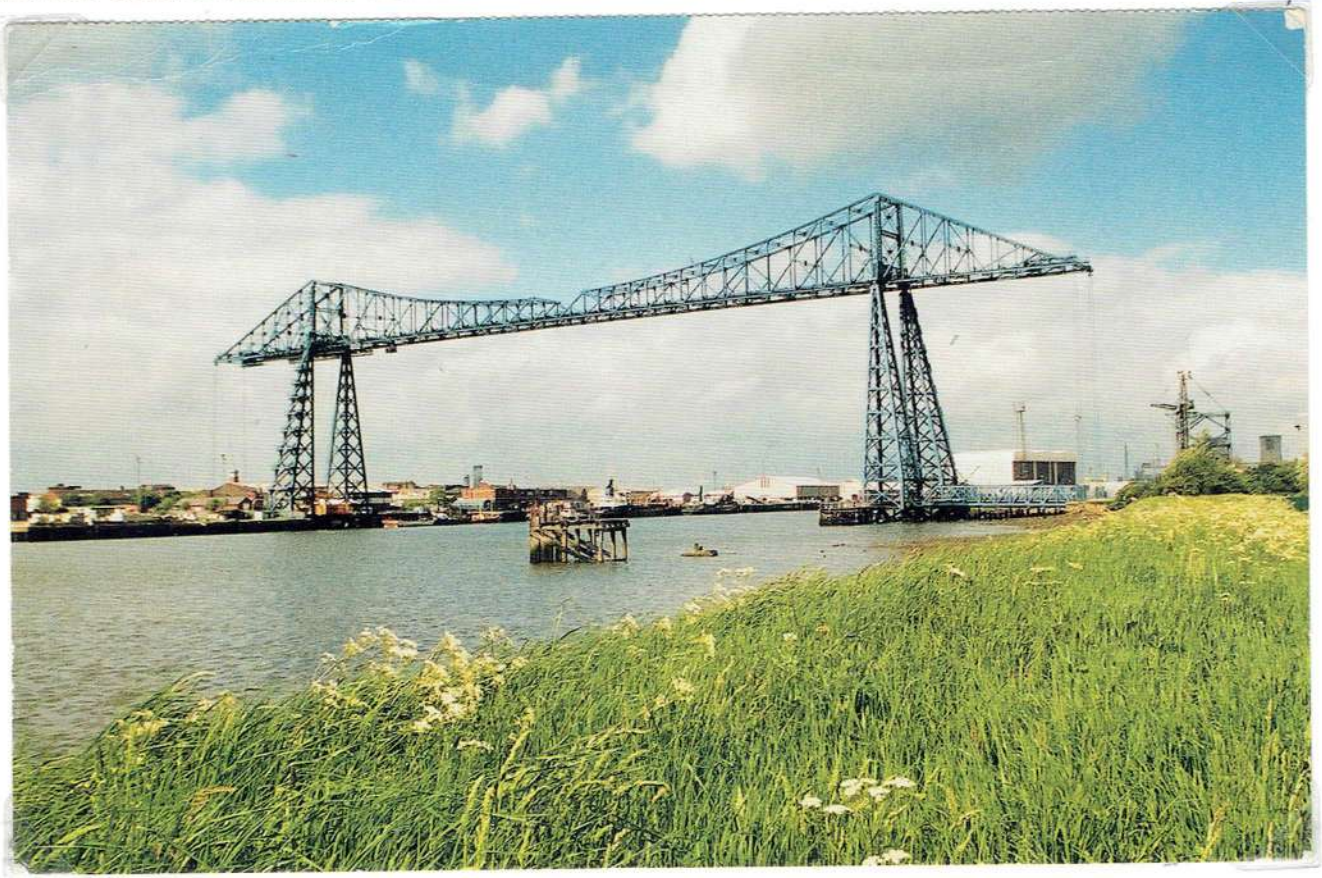




# TRANSPORTER BRIDGES

— ON WHICH THE CONTINUOUS DECK IS REPLACED BY A PLATFORM THAT MOVES FROM ONE SIDE TO THE OTHER  
SUSPENDED FROM AN OVERHEAD FRAME — AS MUCH AN AIRBOURNE FERRY AS A BRIDGE.

LOT 19



MIDDLESBROUGH · ENGLAND



NEWPORT, MON. BRITAIN. ~ OPENED IN 1906

THE PLATFORM CARRYING THE TRAVELLING FRAME FROM WHICH THE TRANSPORTER CAR IS SUSPENDED  
IS SUPPORTED BY TWO STEEL TOWERS 242 FEET HIGH.





ABINGDON IS HERE SEEN FROM THE OXFORDSHIRE SIDE OF THE RIVER THAMES AT ANDERSEY ISLAND. THE CHURCH SPIRE IS THAT OF ST. HELEN'S WHICH IS ONE OF THE FEW ENGLISH CHURCHES WITH FIVE AISLES.

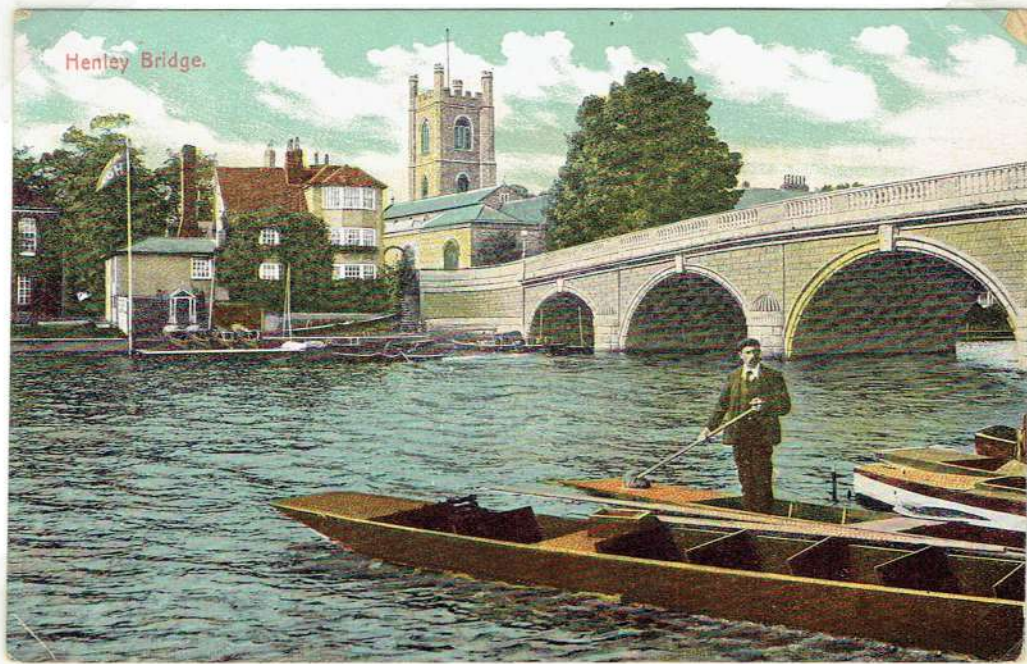
ONCE THE COUNTY SEAT IT HAS RUINS OF A LARGE BENEDICTINE MONASTERY DESTROYED IN THE REIGN OF HENRY VIII. THE OLD HOUSES IN THAMES STREET AND THE BUILDHALL WERE ONCE PART OF THE ABBEY.





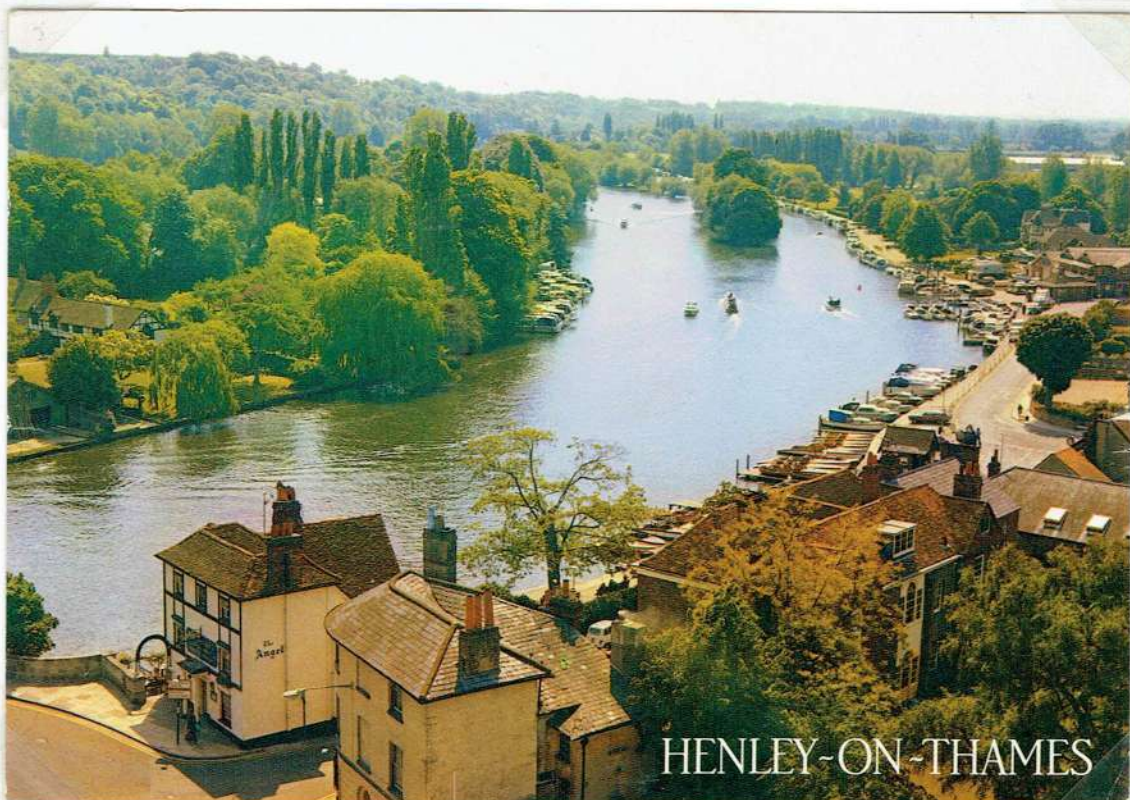
# HENLEY

LOT 20



THE MOST FAMOUS THAMES RESORT DUE TO THE ANNUAL REGATTA HELD HERE IN JULY. THE FIRST INTER-VARSITY RACE TOOK PLACE HERE IN 1829 AND WITHIN 10 YEARS IT WAS RECOGNISED AS A NATIONAL EVENT ENJOYING ROYAL PATRONAGE.

THE BRACEFUL BRIDGE IS 18<sup>TH</sup> CENTURY, DECORATED WITH THE FACES OF FATHER THAMES AND THE GODDESS ISIS. KENTON THEATRE, COMPLETED IN 1804, IS THE 4<sup>TH</sup> OLDEST THEATRE IN ENGLAND.





# MAIDENHEAD

LOT 20



ORIGINALLY 'MAIDENS HITHE' (LANDING PLACE) THOUGH WHY MAIDENS CAME THERE IS NOT KNOWN. FOR SOME INEXPLICABLE REASON, PERHAPS A JOKE, THIS NAME WAS TURNED INTO MAIDENHEAD.



THE TOWN FIRST BEGAN TO GROW IN THE 13<sup>TH</sup> CENTURY AROUND THE BRIDGE WHICH WAS REPLACED IN 1772 BY A FINE STONE ONE. MAIDENHEAD, SO NEAR TO LONDON AND ON ONE OF THE LOVELIEST STRETCHES OF THE THAMES, HAS BECOME A POPULAR RESIDENTIAL COMMISTER TOWN.

ed