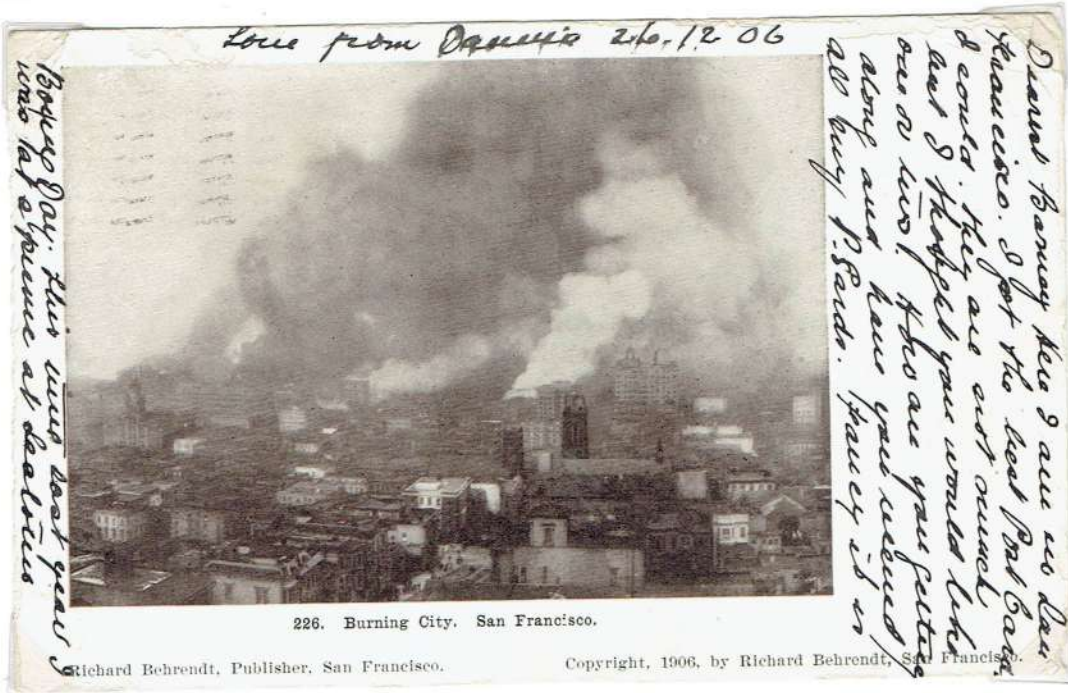


MAN IS INVOLVED IN A CONTINUAL STRUGGLE AGAINST DISASTER.
 SINCE 1900 ALONE, EARTHQUAKES HAVE KILLED ABOUT
 2 MILLION PEOPLE AROUND THE WORLD.

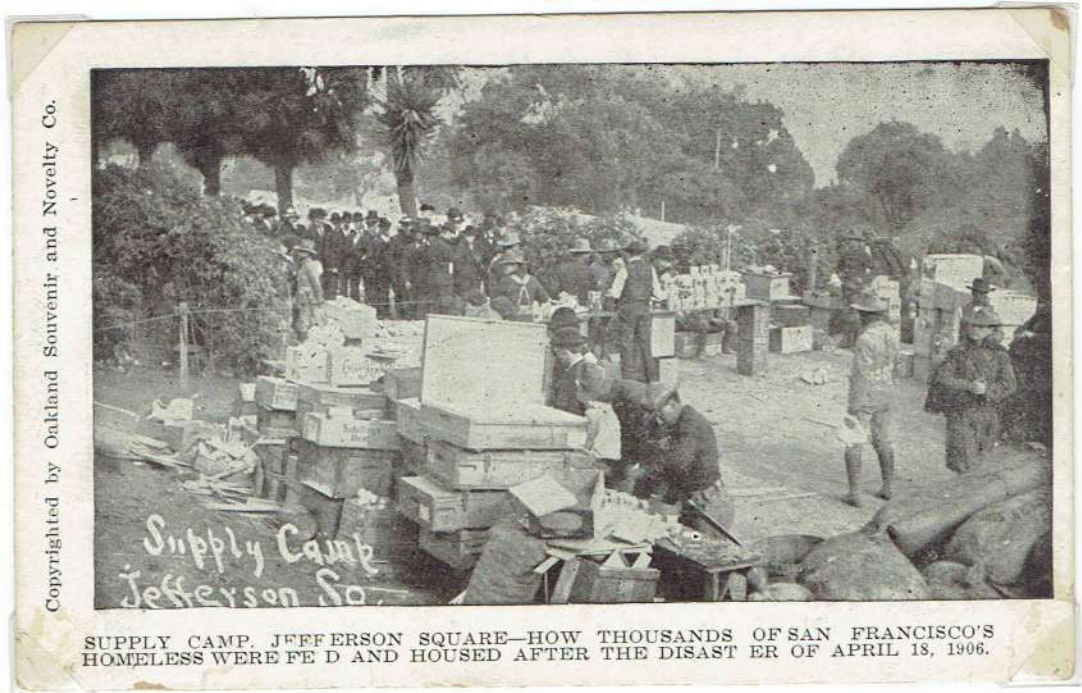
LOT 31



1906
 APRIL 18

.....AT PRECISELY 5:13 THIS MORNING SAN FRANCISCO WAS HIT BY THE MOST VIOLENT EARTHQUAKE EVER RECORDED IN ITS HISTORY...

POB: RICHARD BEHRENDT. 1906



THE HOMELESS BEING FED AT JEFFERSON SQUARE SUPPLY CAMP

POB: OAKLAND SOUVENIR & NOVELTY CO.



VALPARAISO · CHILE · AUGUST · 17 · 1906 · MOST OF THE CITY WAS DESTROYED · IN A FEW MINUTES 2500 LOST THEIR LIVES.



CALABRIA · ITALY · SEPTEMBER 9 · 1905
 2000 PEOPLE DIED IN AN EARTHQUAKE FOLLOWED BY ANOTHER EARTHQUAKE AT MONTEROSSA ON SEPTEMBER, 14. WITH THE LOSS OF 3000 LIVES.



Rovine di Messina - Via Colapesce e via delle Fabbriche



Via Placida - Morti estratti dalle macerie dalla Squadra Milanese.



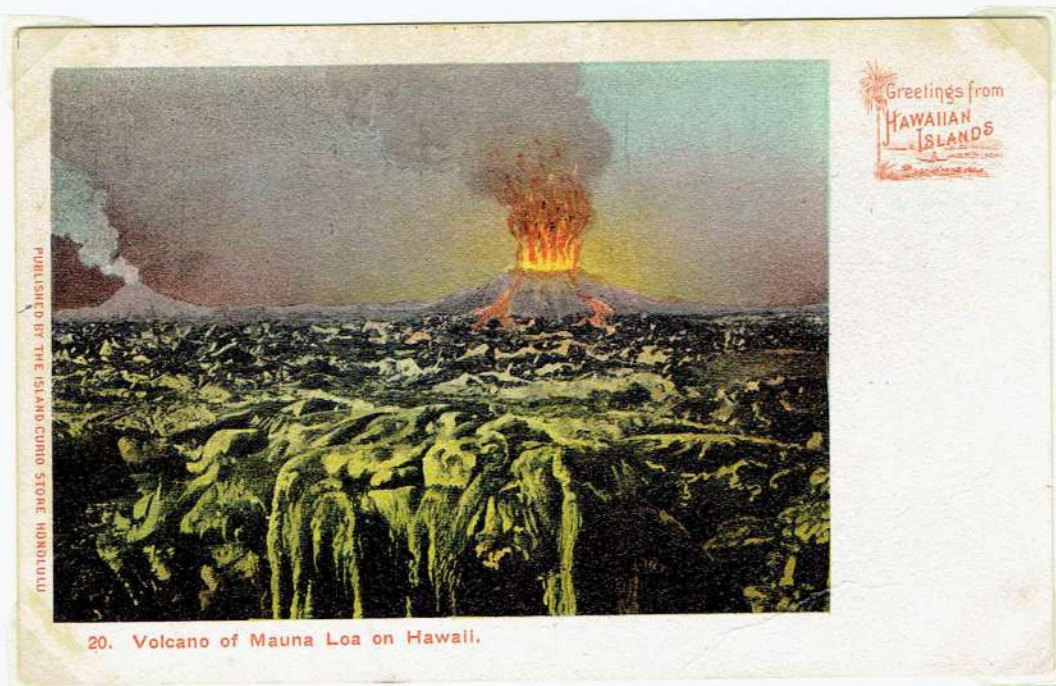
Messina - Le rovine intorno al torrente Portalegna

VOLCANIC ERUPTIONS



KAPOHO VOLCANO. HAWAII.

THE TOWN OF KAPOHO WHICH WAS SITUATED ON THE PUNA RIFT ZONE AND THE VOLCANO WHICH DESTROYED THE TOWN.



MADNA LOA VOLCANO · HAWAII.

000

ERUZIONE DEL VESUVIO - APRILE 1906. THE ERUPTION OF MT. VESUVIUS - APRIL 1906

LOT 32



LO SGOMBERO ALLA STAZIONE FERROVIARIA PER FAR PROSEGUIRE IL TRENO.

LIT: CLEARING THE ASH FROM THE RAILWAY STATION TO ALLOW THE TRAIN TO CONTINUE.



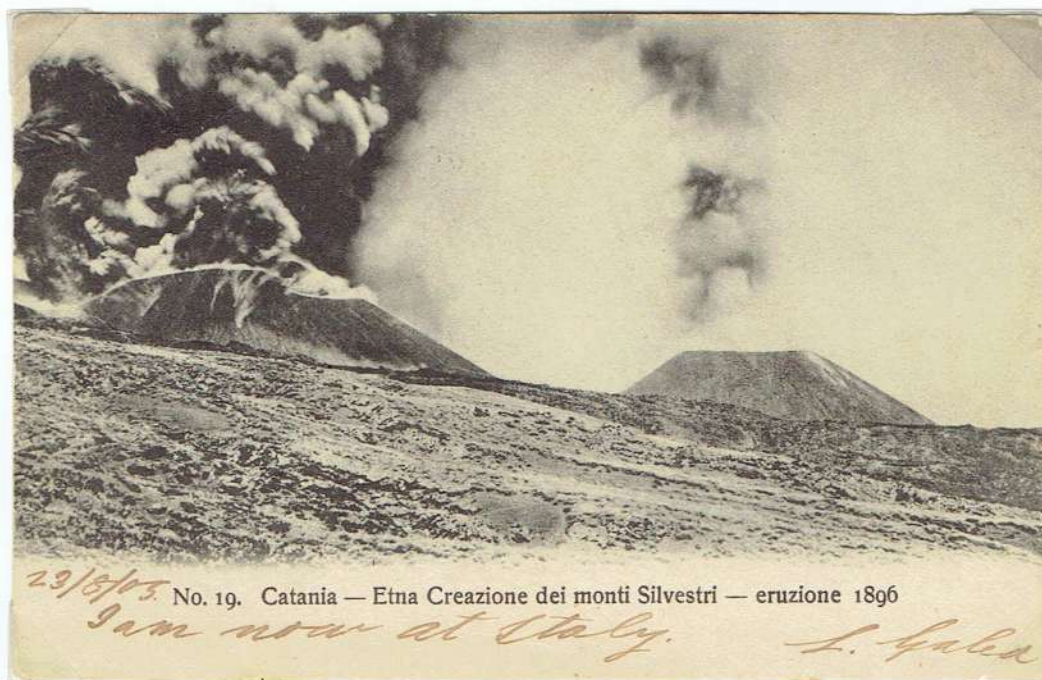
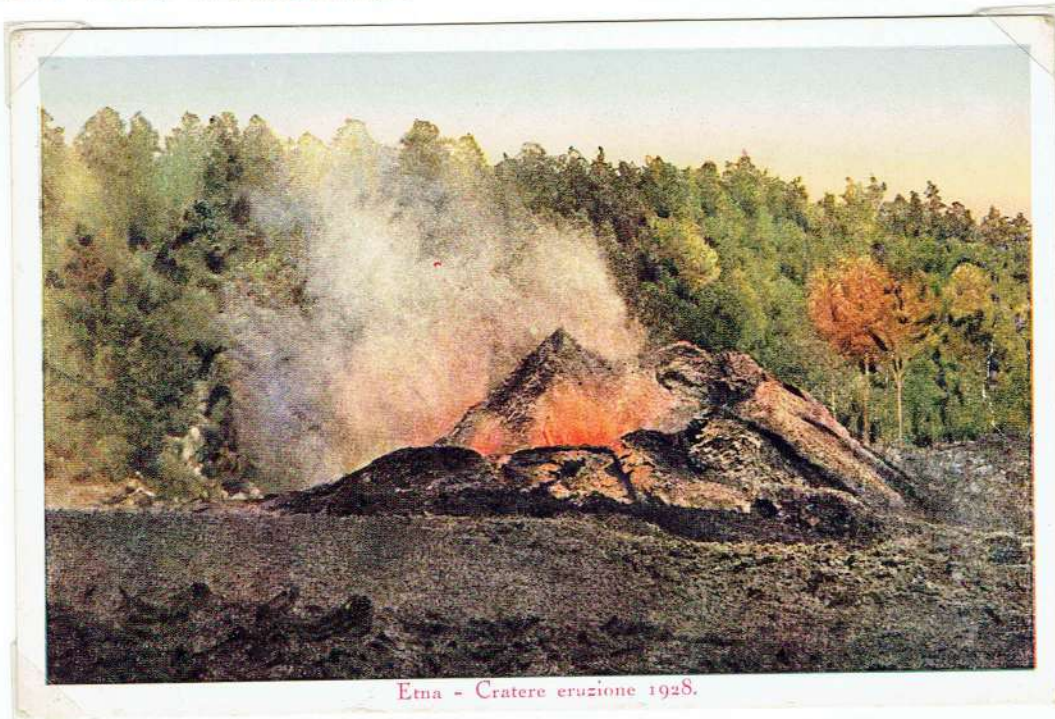
VESUVIO VEDUTO DA MARE PRESSO TORRE DEL GRECO ERUZIONE 9 APRILE 1906.

de

MOUNT ETNA, SICILY - EUROPE'S MOST ACTIVE VOLCANO.

NOVEMBER 5, 1928 - LAVA FROM ETNA THREATENS
CATANIA HAVING DESTROYED A LARGE AREA INCLUDING
VILLAGES AND RAILWAYS.

LOT 32



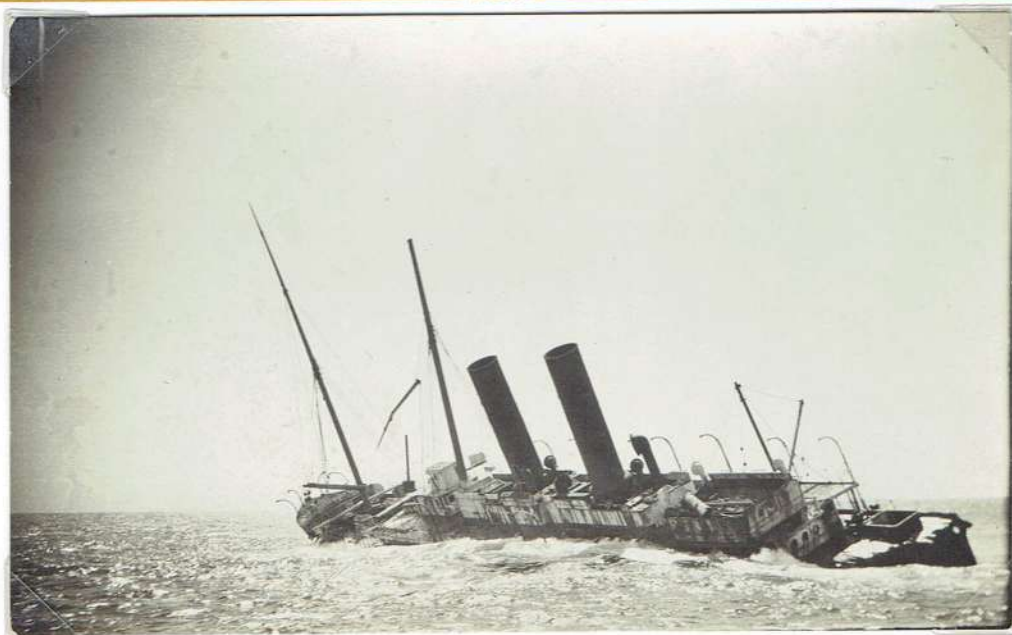
ERUPTION 1896

DISASTERS

ONE HUNDRED YEARS OF HUMAN STRUGGLE
 AGAINST ~ FIRE • FLOODS • STORMS • LANDSLIDES •
 EARTHQUAKES • VOLCANOES • WAR AND HIS OWN
 FRAGILITY.



do



KODAK POSTCARD BACK • AUSTRALIA.

do

DEVASTATING FLOODS AROUND THE WORLD

LOT 33

Nov 2. 06



BENALLA. QUEENSLAND
OCTOBER 2. 1906

do

KOLN (COLOGNE)
GERMANY 1926

do



MISSOURI VALLEYS
GREATEST FLOOD
APRIL. 1952.

do



GORDON DRIVE AND RAILROAD TRACKS, SIOUX CITY, IOWA

LORAIN · OHIO · USA TRI-STATE TORNADO MARCH 18 · 1925

LOT 33



WEST ERIE AND LAKE VIEW BOULEVARD—LORAIN, OHIO



LORAIN DRY GOODS COMPANY, ON BROADWAY—LORAIN, OHIO

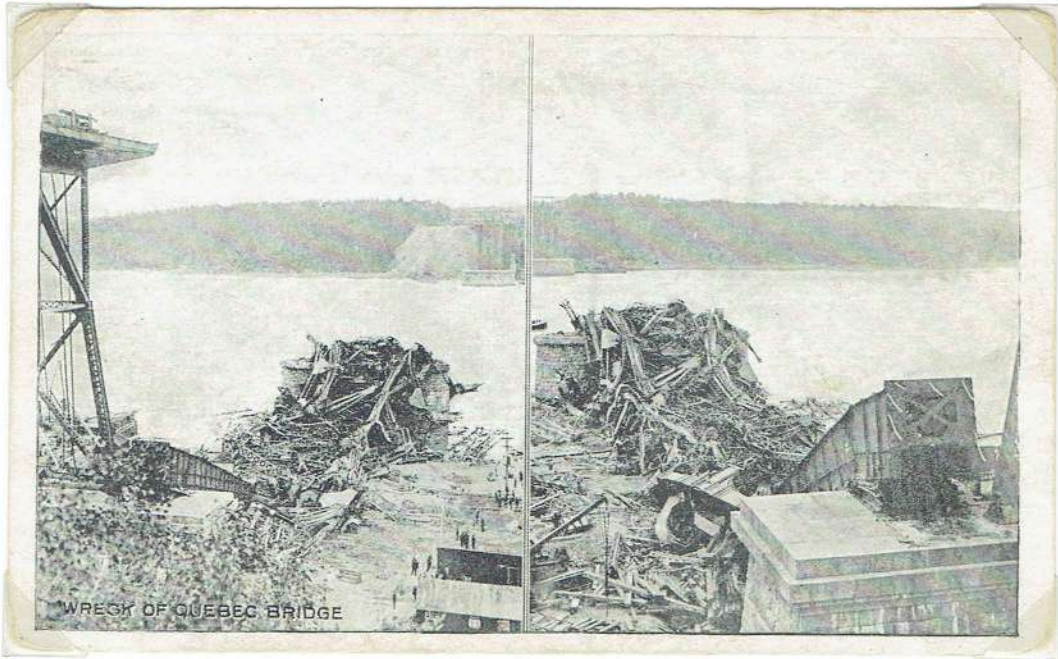


WATCH YOUR STEP!.....

QUEBEC. CANADA · AUGUST 29 · 1907

80 PEOPLE DROWN WHEN PART OF A NEW BRIDGE ACROSS
THE ST. LAWRENCE RIVER COLLAPSES.

LOT 34



PUB: ILLUSTRATED POSTCARD CO. MONTREAL · CANADA.



APRIL · 24 · 1909. LÜBECK · GERMANY.

TOWN BRIDGE HIT BY THE FINNISH SHIP 'BAL TIC'.

PUB: HUGO MEYER KUNSTVERLAG · LÜBECK

MAY 8, 1937 THE END OF AN ERA.

LOT 34

THE GREATEST AIRSHIP EVER BUILT DIES IN A STORM. 34 DEATHS.



hindenburg

CAPT. MAX PRUSS
1890-1960

U.S.A. BOSTON NY LAKEHURST
NOVA SCOTIA CAPE CANSO

SCILLY ISLES DUNGENESS FLUSHING BREDA TILBURG EINDHOVEN COLOGNE
FRANKFURT FAGA

THE 'HINDENBURG' LEFT FRANKFURT 4 MAY 1937 & ARRIVED IN A STORM AT LAKEHURST 4:00 PM MAY 6TH HAVING FLOWN 4381 MILES IN 77 HOURS-12 HOURS LATE DUE TO HEADWINDS. AT 7:20 PM THE FIRST LANDING ROPES WERE DROPPED & AT 7:25 FIRE STARTED IN THE TAIL & IN 32 SECONDS THE HULL SANK TO EARTH & THE ERA OF THE AIRSHIP HAD PASSED. THE U.S.A BUREAU OF AIR COMMERCE CONCLUDED THAT A LEAKING GAS CELL CAUSED AN EXPLOSION, BUT THE SABOTAGE THEORY WAS HELD BY THE CAPTAIN & OTHERS INVOLVED IN THIS DISASTER. OF THE 96 PERSONS ABOARD 34 PERISHED.

1ST FLIGHT to U.S.A in RECORD TIME of 65 Hours FRIEDRICHSHAFEN TO LAKEHURST-8 MAY 1936

BUILT 1931-36. COST \$500,000. MAIDEN FLIGHT 4-3-36. LENGTH 803 FT. DIA. 153 FT. ENGINES-4 (HP 4200) MAX SPEED 84 MPH. CRUISING 78 MPH. RANGE 8700 MILES. CREW 60. PASSENGERS 50. 7062,940 CUB. FT. FARE: FRANKFURT-NEW YORK SINGLE \$400-RETURN \$720

Much of the duralumin salvaged from the crashed R101 was purchased by the ZEPPELIN CO & reprocessed for the framework of the 'HINDENBURG'

FAGA POSTCARD No 310 PRINTER: SOUTHERN PRINTERS. SOUTHAMPTON ENGLAND.

NAGASAKI. JAPAN - THE WRONG PLACE AT THE WRONG TIME.

AUGUST 9 1945 — "AN ATOMIC BOMB HAS BEEN EXPLODED

OVER NAGASAKI — THE ORIGINAL TARGET KOKURA HAD TO BE ABANDONED
WHEN BAD WEATHER PREVENTED THE LOCATION OF THE AIM POINT"

LOT 34



TERRIBLE SIGHT BY ATOMIC BOMB AT NAGASAKI CITY.

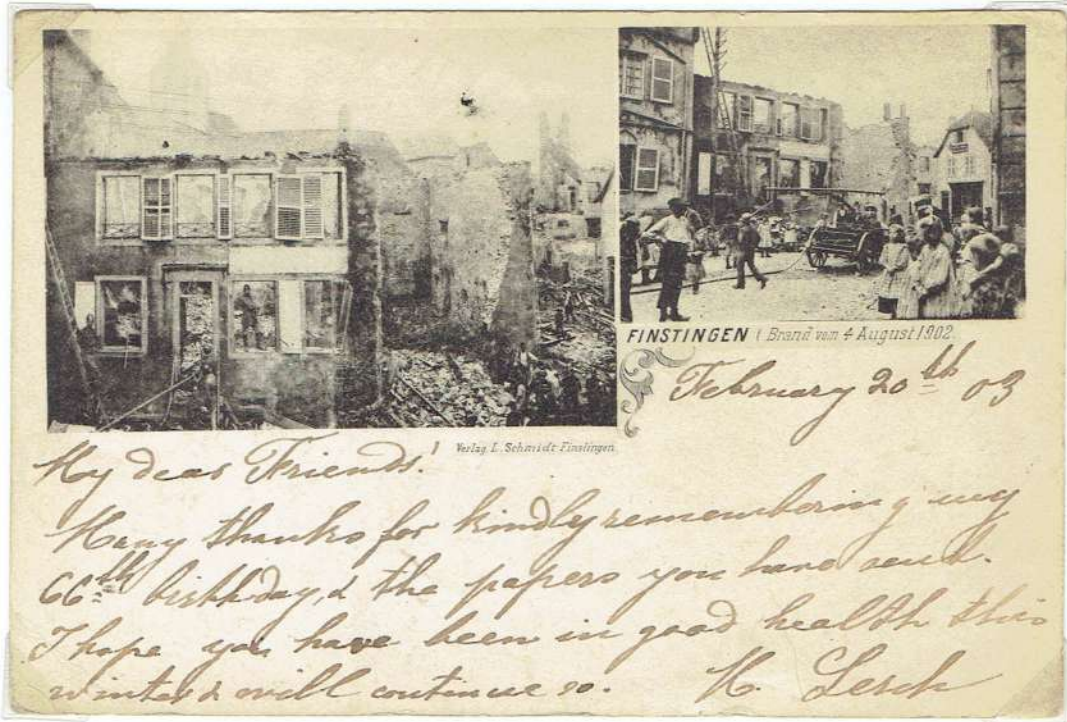


JAPANESE POSTCARDS - PUBLISHER NOT KNOWN.

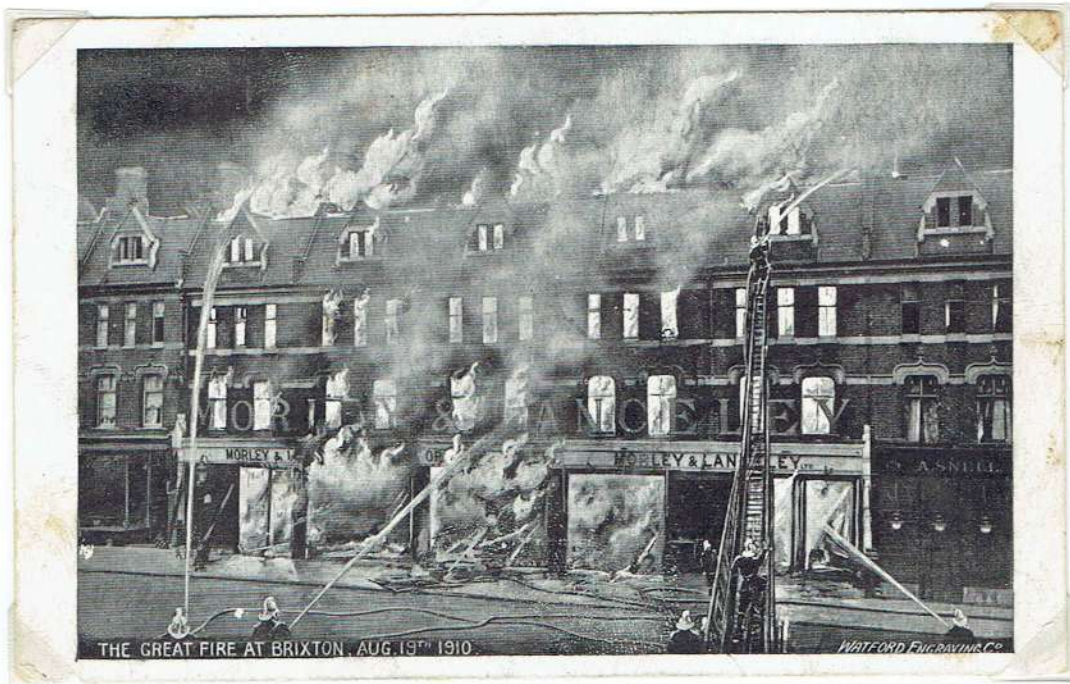


FIRE

LOT 35



AUGUST 4, 1902 · A LARGE SECTION OF THE GERMAN TOWN OF FINSTINGEN IS DESTROYED BY FIRE.



AUGUST 19, 1910 THE GREAT FIRE IN THE SOUTH LONDON DISTRICT OF BRIXTON.

FIRE.

LOT 35

DIE ABGEBRANNTÉ DRESDENER VOGELWIESE. AM 2. AUGUST. 1909.

'THE BURNT-OUT DRESDEN BIRD MARKET .2 AUGUST. 1909.

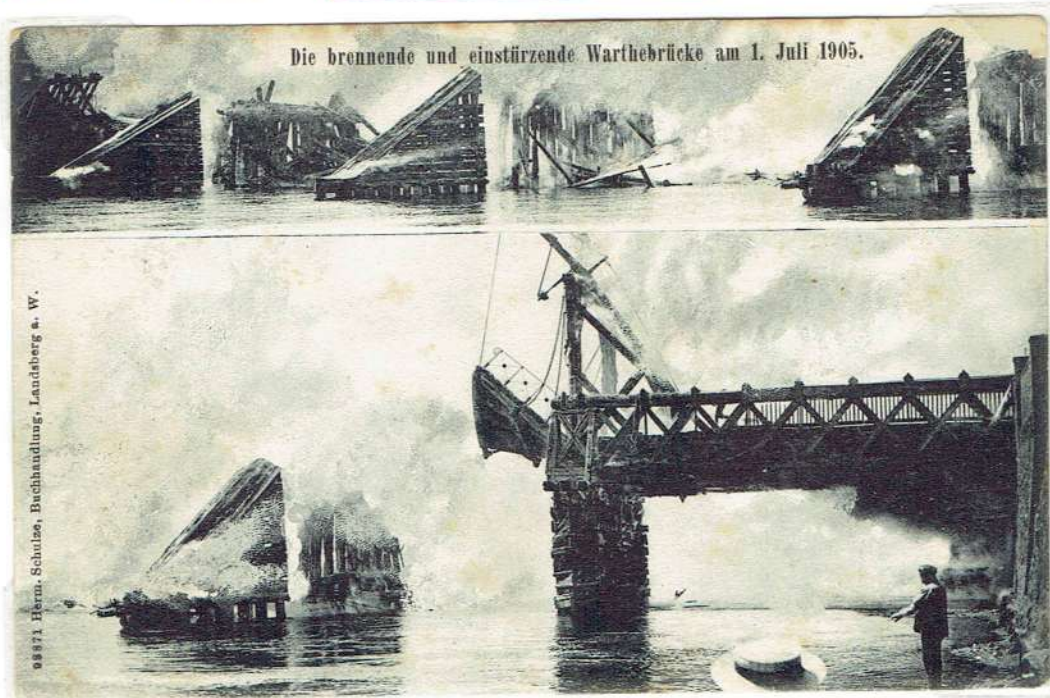


Pub: CARL DÖRÉ. DRESDEN .N12. POSTMARKED 12.8.09.

DIE BRENNENDE UND EINSTÜRZENDE WARTHEBRÜCKE.

THE FIRE BURNING AND COLLAPSE OF THE WARTHEBRIDGE

1 JULY. 1905. LANDSBERG. GERMANY.

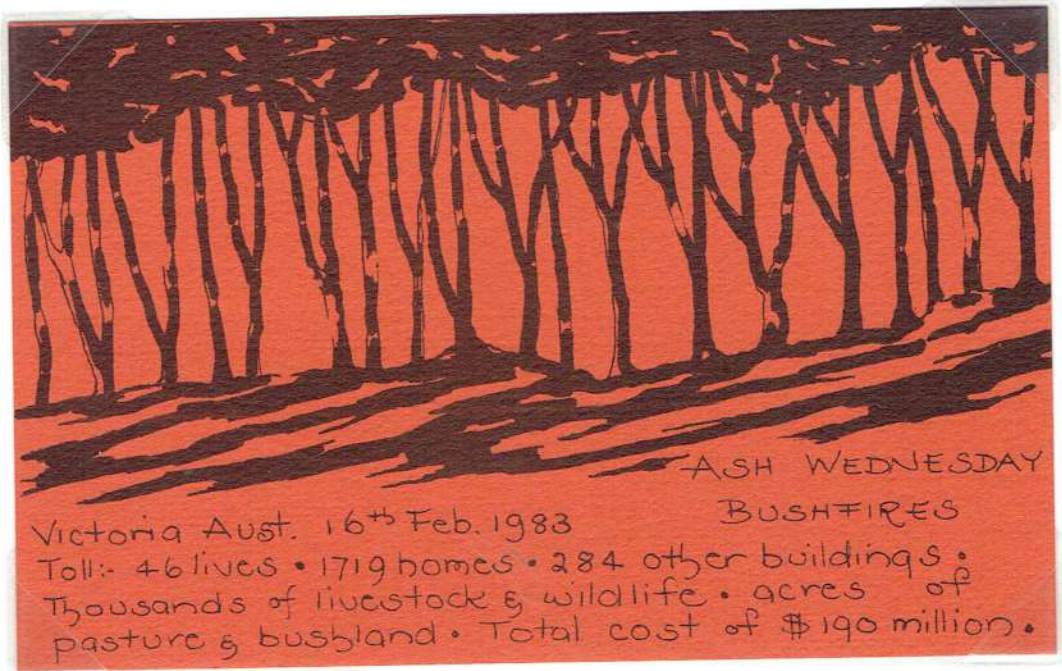


98971 Herrn. Schulze, Buchhandlung, Landsberg a. W.

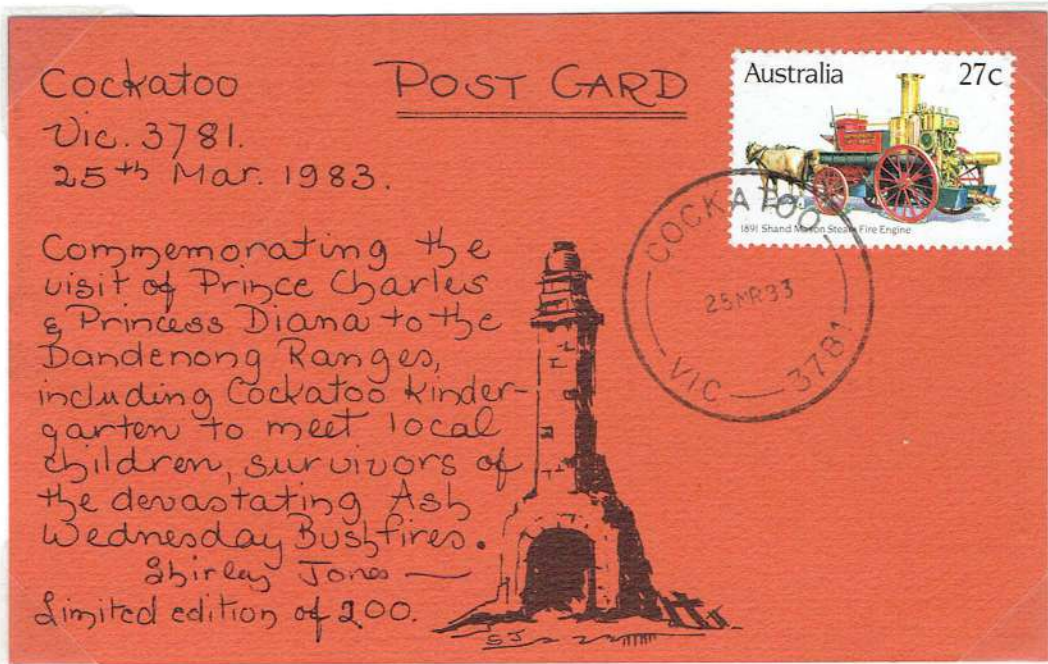
db

VICTORIA • AUSTRALIA • 16 FEBRUARY • 1983 •

LOT 35



THE ASH WEDNESDAY BUSH FIRES • TOLL - 46 LIVES •
1719 HOMES • 284 OTHER BUILDINGS • THOUSANDS OF LIVESTOCK •
AND WILDLIFE • ACRES OF PASTURE AND BUSLAND.
TOTAL COST OF \$190 MILLION.



PRIVATELY PRINTED POSTCARDS BY SHIRLEY JONES OF
COCKATOO, VICTORIA, 1983. LIMITED EDITION OF 200 POSTCARDS

db

HONG KONG STORM

1971

5-27



一九七一年颱風襲港。圖為海上船隻遭受颱風破壞情況
Storm damage in Hong Kong, 1971

5-26



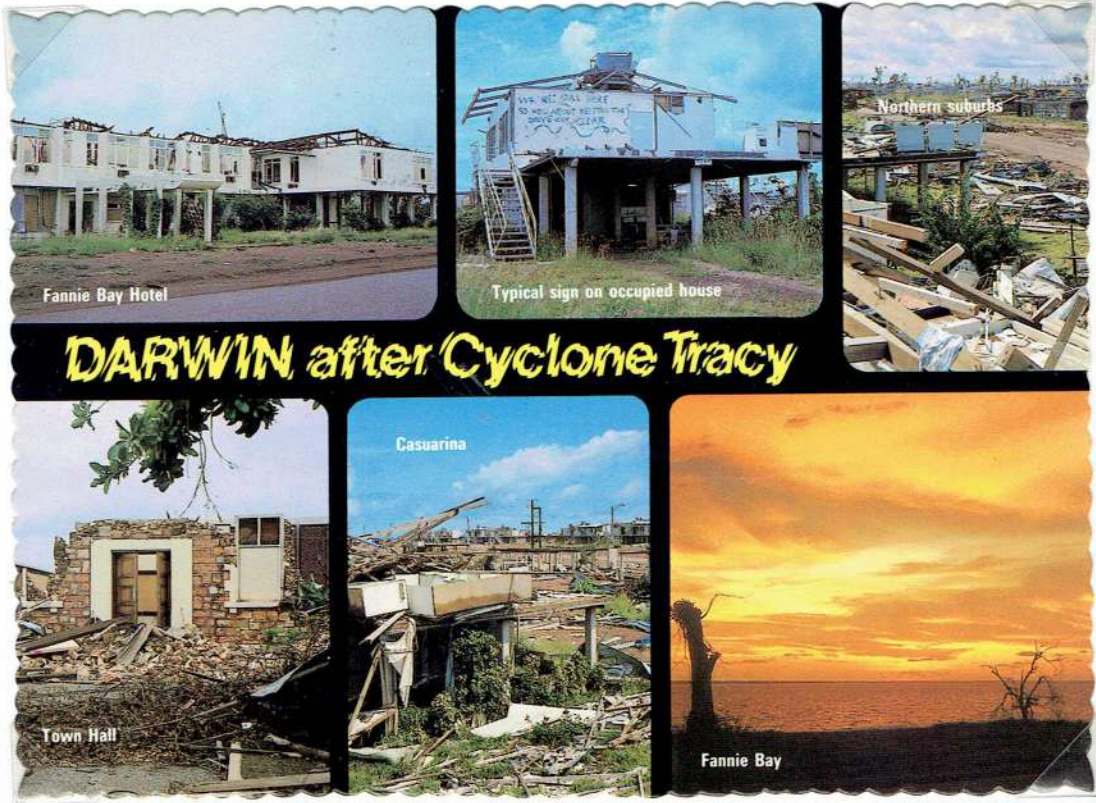
一九七一年颱風襲港。圖為海上船隻及街道多處遭受颱風破壞情況
Storm damage in Hong Kong, 1971

TYPHOON 'ROSE'
SOUTH CHINA SEA 1971.

DARWIN · AUSTRALIA · DECEMBER 25 · 1974.

LOT 36

CYCLONE TRACY STRUCK IN THE NIGHT AND RIPPED THE CITY APART. 66 PEOPLE DIED. HALF THE CITY'S INHABITANTS WERE EVACUATED TO THE SOUTH.....



DARWIN after Cyclone Tracy

PUB: No. 1662. V06 No DAC18.

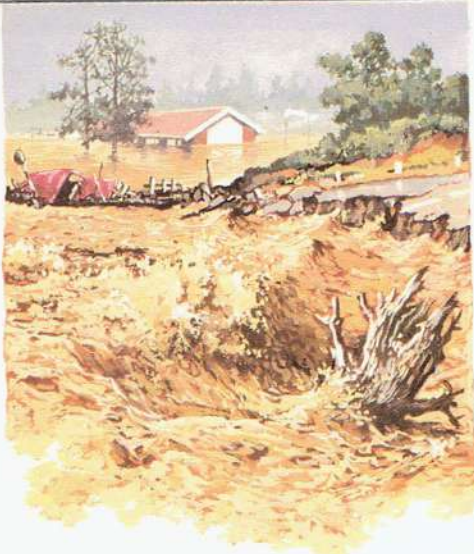
BECAUSE OF THE DEVASTATION AND LOSS OF NORMAL FACILITIES, SPECIAL POSTAL ARRANGEMENTS WERE IMPLIMENTED.....



Handwritten mark at the bottom center of the envelope.

1987. NATAL PROVINCE. SOUTH AFRICA.

LOT 36



24.1
VLOEDRAMP
FLOOD DISASTER
DURBAN
1987-11-16



24.1
VLOEDRAMP
FLOOD DISASTER
DURBAN
1987-11-16



FLOOD DISASTER 4-22-1
VLOEDRAMP
NATAL

DURING THE WEEK OF 27 SEPTEMBER TO 3 OCTOBER 1987 SOUTH AFRICA WAS HIT BY THE WORST NATURAL DISASTER IN LIVING MEMORY WHEN TORRENTIAL RAINS CAUSED A DEVASTATING DELUGE IN THE NATAL PROVINCE..

MORE THAN 300 PEOPLE WERE KILLED, MANY REMAIN MISSING, THOUSANDS LOST THEIR HOMES AND ALL THE POSSESSED.

L A T I N · B R I T I S H

GREAT WHITE CITY · SHEHERDS BUSH. LONDON



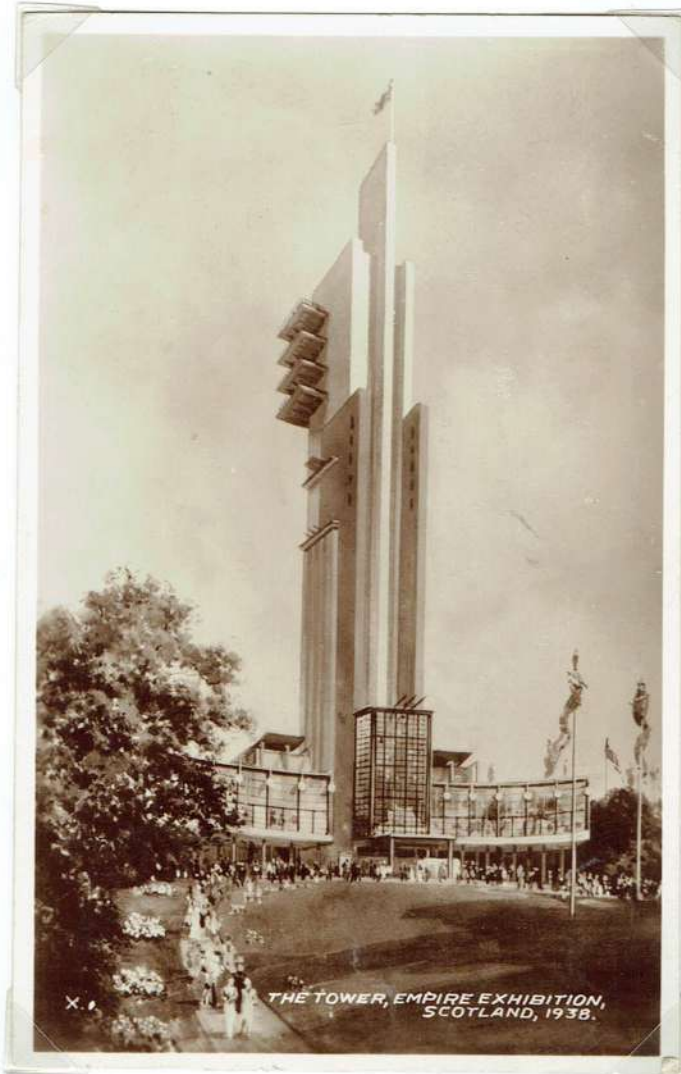
OPENED BY PRINCESS ALEXANDER OF TECK. A SECTION OF THE COURT OF ARTS WAS DEVOTED TO LIFE SAVING AT SEA, AND PRIZES WERE AWARDED FOR THE BEST PRACTICAL INVENTIONS. ELECTRIC TRAMS TO CARRY VISITORS AROUND THE EXHIBITION WERE USED FOR THE FIRST TIME.



TOWER OF EMPIRE

LOT 37

GLASGOW 1938.
MAP REF: 76



THE TOWER, EMPIRE EXHIBITION, SCOTLAND, 1938.



THE TOWER OF EMPIRE, BY NIGHT, EMPIRE EXHIBITION, SCOTLAND, 1938

A.70

OFFICIAL CARDS

ARTIST: BRIAN GERALD

Have just been to top of the tower

VALENTINE'S OFFICIAL THROUGHOUT POST CARD

EMPIRE EXHIBITION
GLASGOW
MAY-OCTOBER 1938

POSTAGE 1D
REVENUE 1D

THIS IS A REAL PHOTOGRAPH
VALENTINE & SONS LTD.
DUNDEE AND LONDON

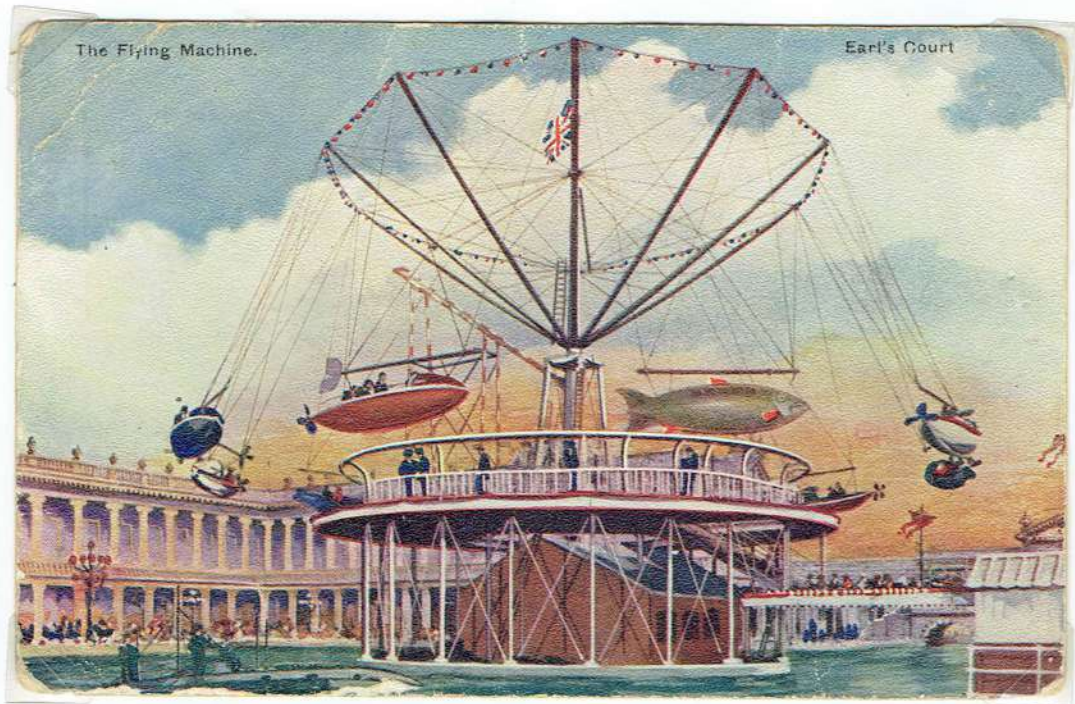
EXHIBITION SCOTLAND 1938

*Dear all
We are here to day
is it glorious was
up at 2 past 5 this
morning wonders how
cease! Cheerio
to you all are well*

*The Walker family
147 Dood Street
Longwood
Huddersfield
Yorkshire*

EARL'S COURT AMUSEMENTS

LOT 37



BULGARIAN EXH. 1892.

LOT 38



OFFICIAL EXHIBITION POST CARD AND POST MARK 1. Nov. 1892.

KRAFT-ARBEITSMASCHINEN AUSSTELLUNG 1898 MÜNCHEN.

TRADE-WORK AND MACHINE EXHIBITION · MUNICH, GERMANY 1898.



ADVERTISING POSTCARD FOR-
FREYA BICYCLES (FAHRRADWERKE) BICYCLE WORKS

PARIS

EXPOSITION

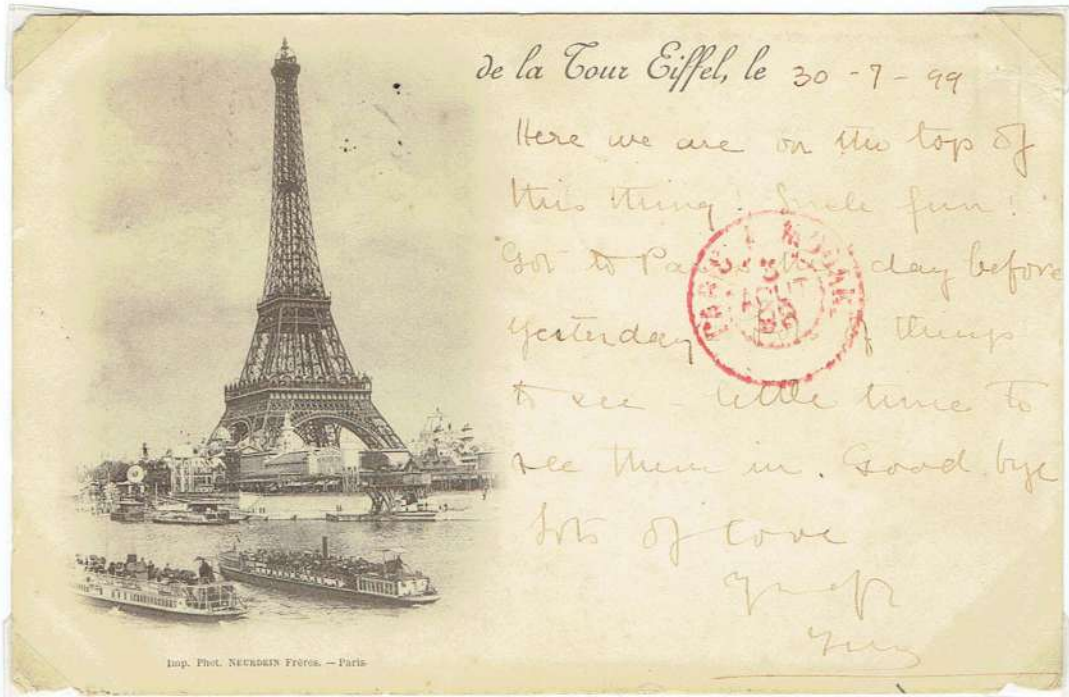
LOT 38

UNIVERSELLE

1900



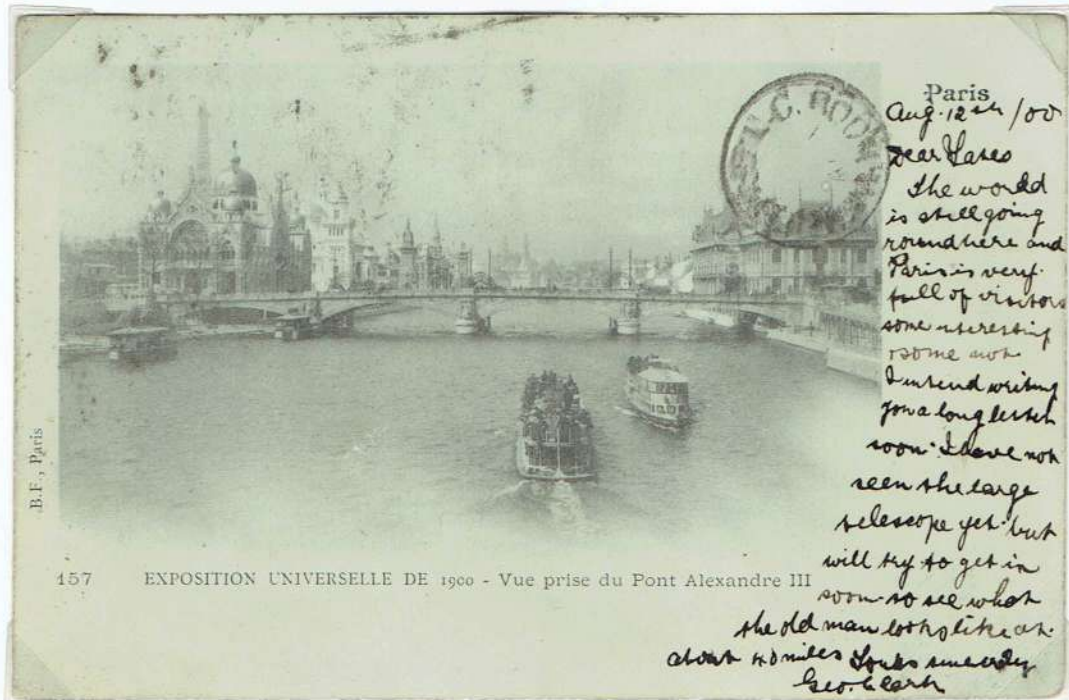
THE 1900 EXPOSITION PRODUCED LITTLE IN THE WAY OF MODERN ADVANCED ARCHITECTURE AND DESIGN.



de la Tour Eiffel, le 30-7-99

Here we are on the top of
this thing! So much fun!
Got to Paris the day before
yesterday of things
to see - little time to
see them in. Good bye
lots of love
Yours
Guy

IT DID LEAVE THREE ENDURING ADDITIONS TO THE CITY - THE GRAND PALACE - THE PETITE PALACE AND THE ALEXANDRE III BRIDGE



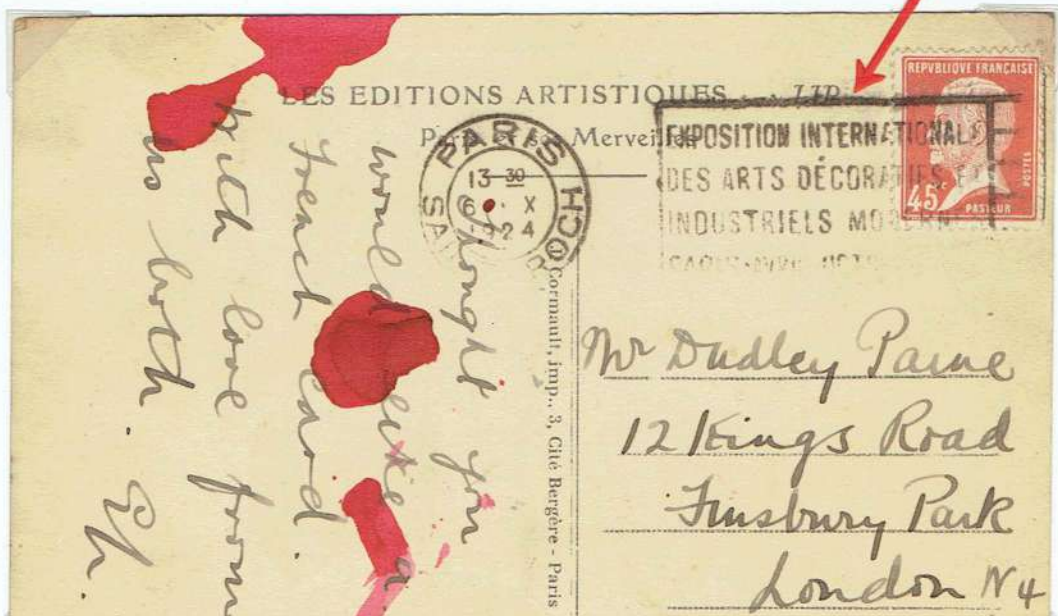
Paris
Aug. 12th /00
Dear Laree
The world
is still going
round here and
Paris is very
full of visitors
some interesting
some not
I intend writing
you a long letter
soon. I have not
seen the large
telescope yet but
will try to get in
soon to see what
the old man looks like as
about 10 miles from me every
day.

EXPOSITION INTERNATIONALE DES ARTS DÉCORATIFS MODERNES

LOT 38

INTERNATIONAL EXPOSITION OF DECORATIVE ARTS MODERN PARIS.

EXHIBITION OPENED BY PRESIDENT DOUMERGUE ON
APRIL 28, 1925 AT A TIME WHEN ART DECO HAD REACHED ITS
PEAK AS AN ART FORM.



NEUILLY SUR MARNE FRANCE 1946
EXPOSITION INTERNATIONALE
D'AVICULTURE ET D'APICULTURE

LOT 39

6-10 JUN. 1946.



HANNOVER INDUSTRIES FAIR 1947.



BACK OF CARD: 6 DEUTSCHE POST STAMPS P/M WITH FAIR CANCELLATION

" OCCASSIONALLY THE EXPORT-SHOW IN HANNOVER 1947 WE SUBMIT TO OUR BUSINESS FRIENDS ABROAD THIS MEMORYCARD WITH SOME POSTAGE-NOVELTIES AND SPECIAL STAMPS AND WE CONNECT HEREWITH OUR BEST REGARDS AND THE HOPE OF A GOOD CO-OPERATION IN THE FUTURE.

WE WOULD BE PLEASED TO REMAIN

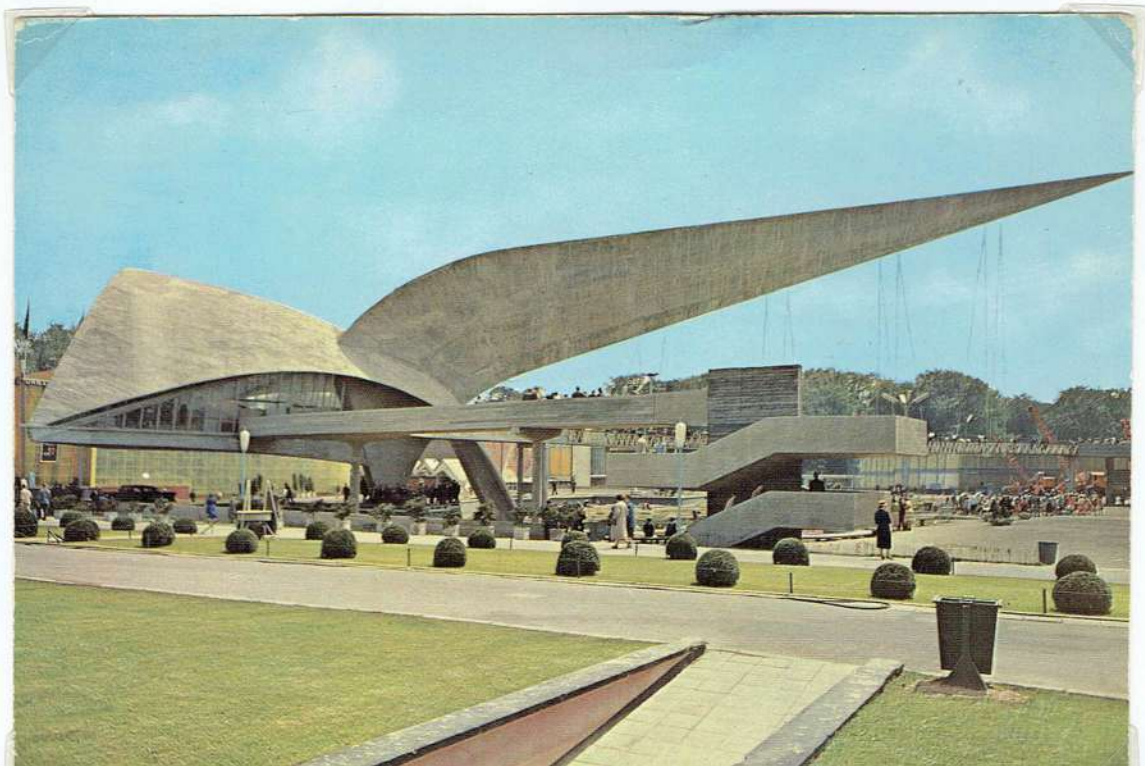


*Exposition
Universelle et Internationale
de Bruxelles 1958*

LA FLÈCHE DU GÉNIE CIVIL

THE ARROW OF THE CIVIL ENGINEERING BUILDING.

MAP REF: 91.

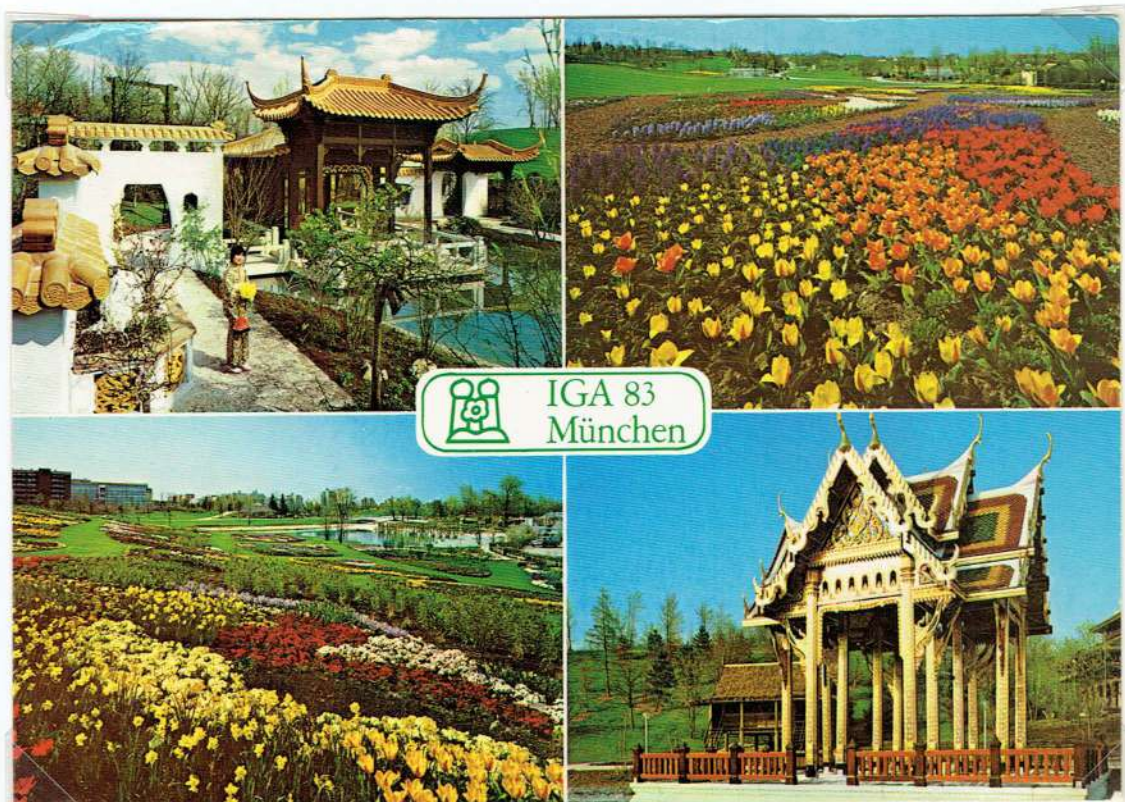


INTERNATIONAL TRADE FAIR. BRNO - CZECHOSLOVAKIA. 1979.

LOT 39



IV INTERNATIONALE GARTENBAU-AUSSTELLUNG
MÜNCHEN 1983



5TH INTERNATIONAL HORTICULTURAL EXHIBITION - MUNICH. GERMANY 1983

1. CHINESE GARDEN 2. TULIP FIELD 3 GENERAL VIEW 4. THAILAND.

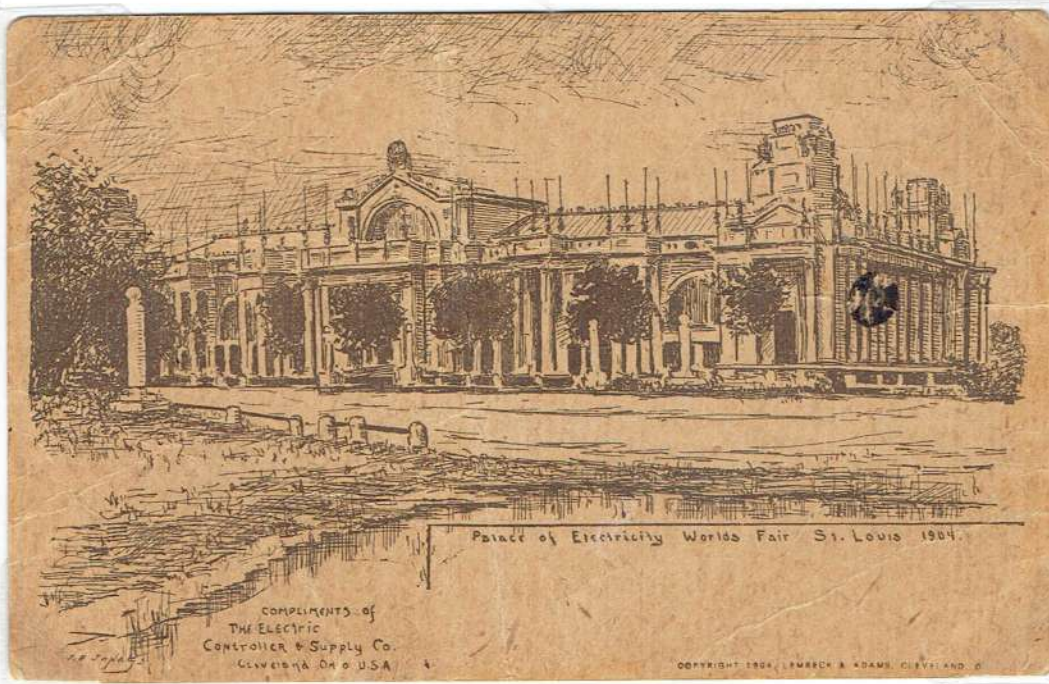
ST. LOUIS • 1904 •

LOT 40

LOUISIANA PURCHASE EXPOSITION. U.S.A.



TRANSPORTATION BUILDING . PUB. TUCK N° 6630



PALACE OF ELECTRICITY PUB: LEMBECK & ADAMS.

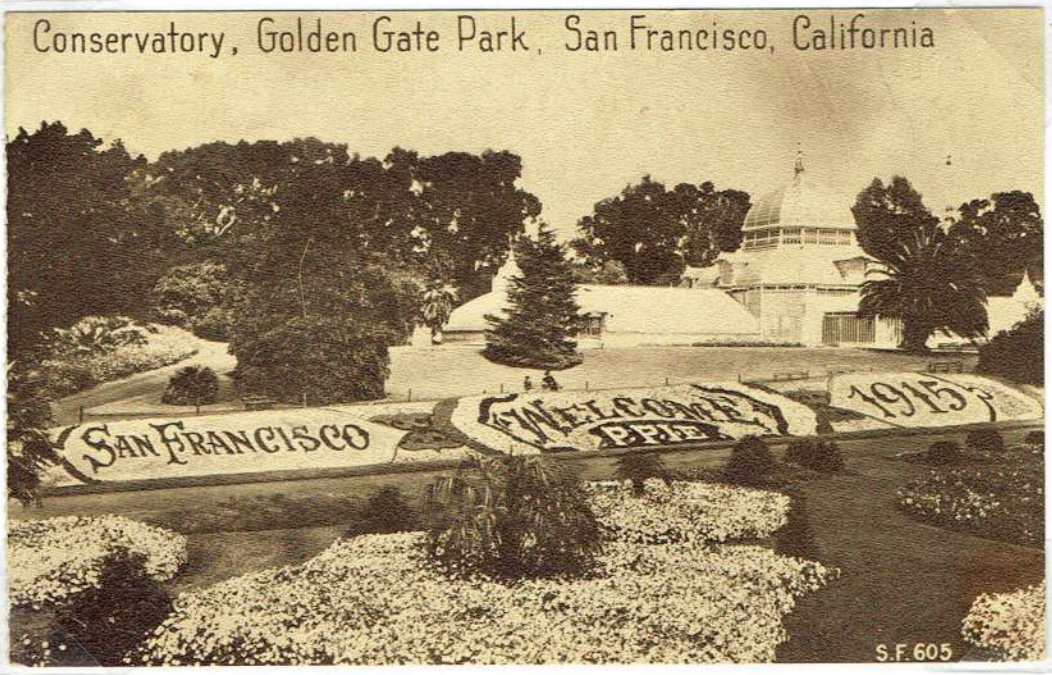
ADVERTISING POSTCARD : THE ELECTRIC CONTROLLER & SUPPLY CO. CLEVELAND, OHIO.

ARTIST : J. B. JONES



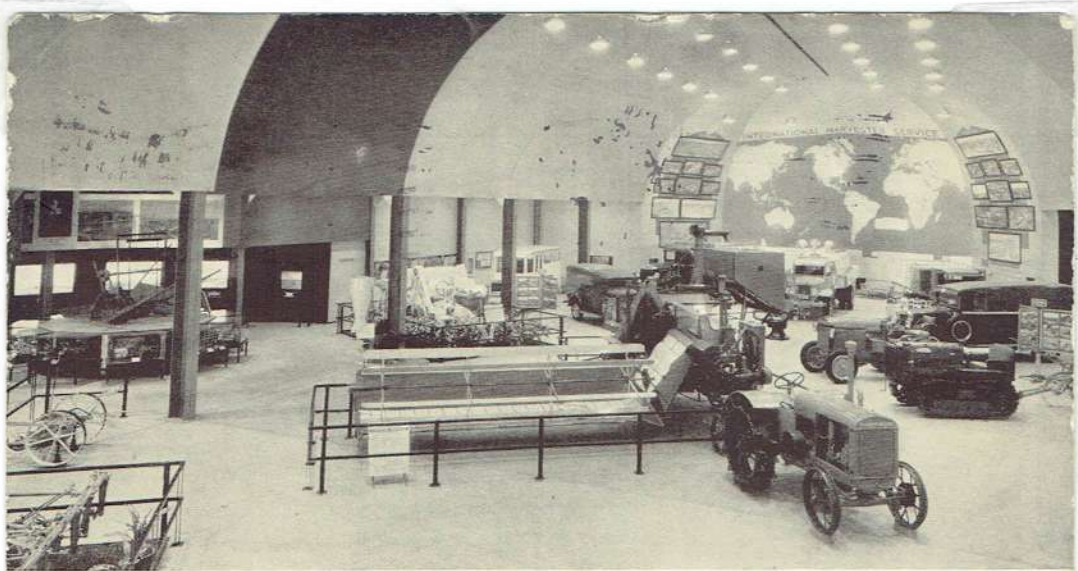


IN 1915 AMERICA CELEBRATED THE PANAMA CANAL WITH
THE PANAMA-PACIFIC INTERNATIONAL EXPOSITION AT
 SAN FRANCISCO ~



1933 ~ CHICAGO WORLD FAIR ~ 1934
 ~ CELEBRATING A CENTURY OF PROGRESS ~

LOT 40



A CENTURY OF PROGRESS
 CHICAGO, 1933

A section of the International Harvester Company exhibit in the Agricultural Building. A replica of the Reaper invented by Cyrus Hall McCormick in 1831 occupies the wing at the left, while today's McCormick-Deering Harvester-Thresher is in the center foreground. Other International Harvester displays are in the Travel and Transport Building.

60