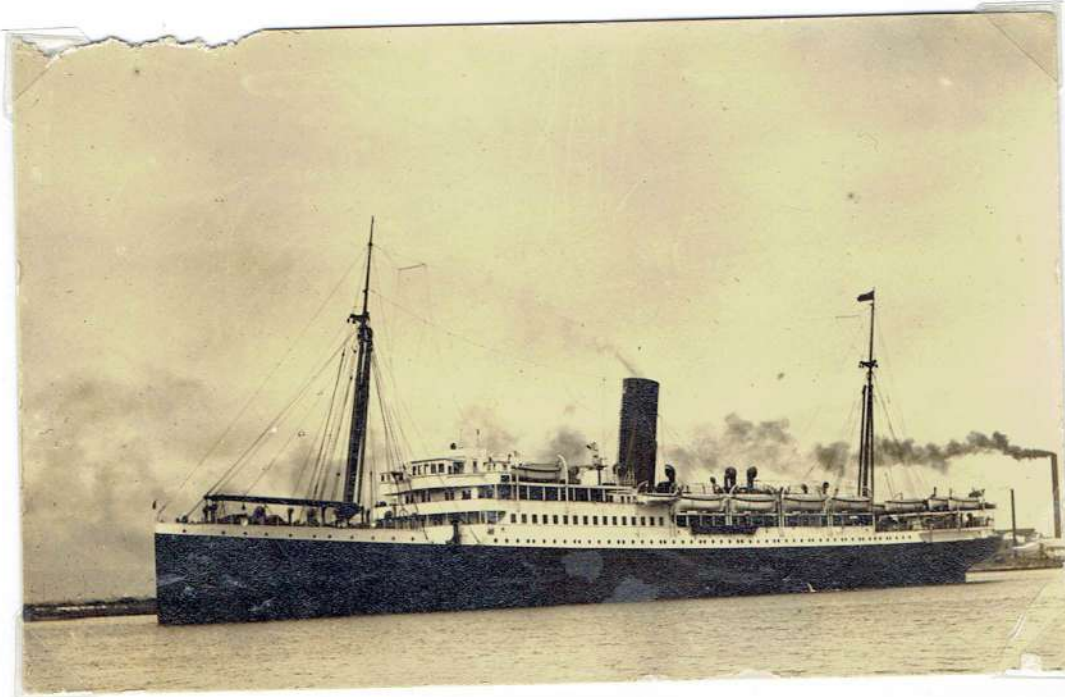


# KATOOMBA

LOT 51



**ROUTE OPERATED:** AUSTRALIAN COASTAL SERVICES

**BUILDER:** HARLAND & WOLFF, BELFAST.

**PROPULSION:** TRIPLE EXPANSION STEAM. TRIPLE SCREW. **SPEED:** 15 KNOTS **TONNAGE:** 9424 GRT

**DIMENSIONS:** 143 x 18M **PASSENGERS:** 209 FIRST 192 SECOND 156 THIRD.

**HISTORY** MAIDEN VOYAGE 1913.

COMMANDERED AS A TROOPSHIP IN 1918. AFTER THE WAR THE SHIP WAS REFITTED AND RESUMED SERVICE ON AUSTRALIAN COAST SERVICE.

1941 TROOPSHIP AGAIN IN THE SECOND WORLD WAR.

1946 SOLD TO COMPANIA MARITIMA DEL ESTE. PANAMA RENAMED COLUMBIA.

SAILED UNDER GREEK LINE FLAG

1947 CHARTERED TO FRENCH LINE FOR CARIBBEAN SERVICE

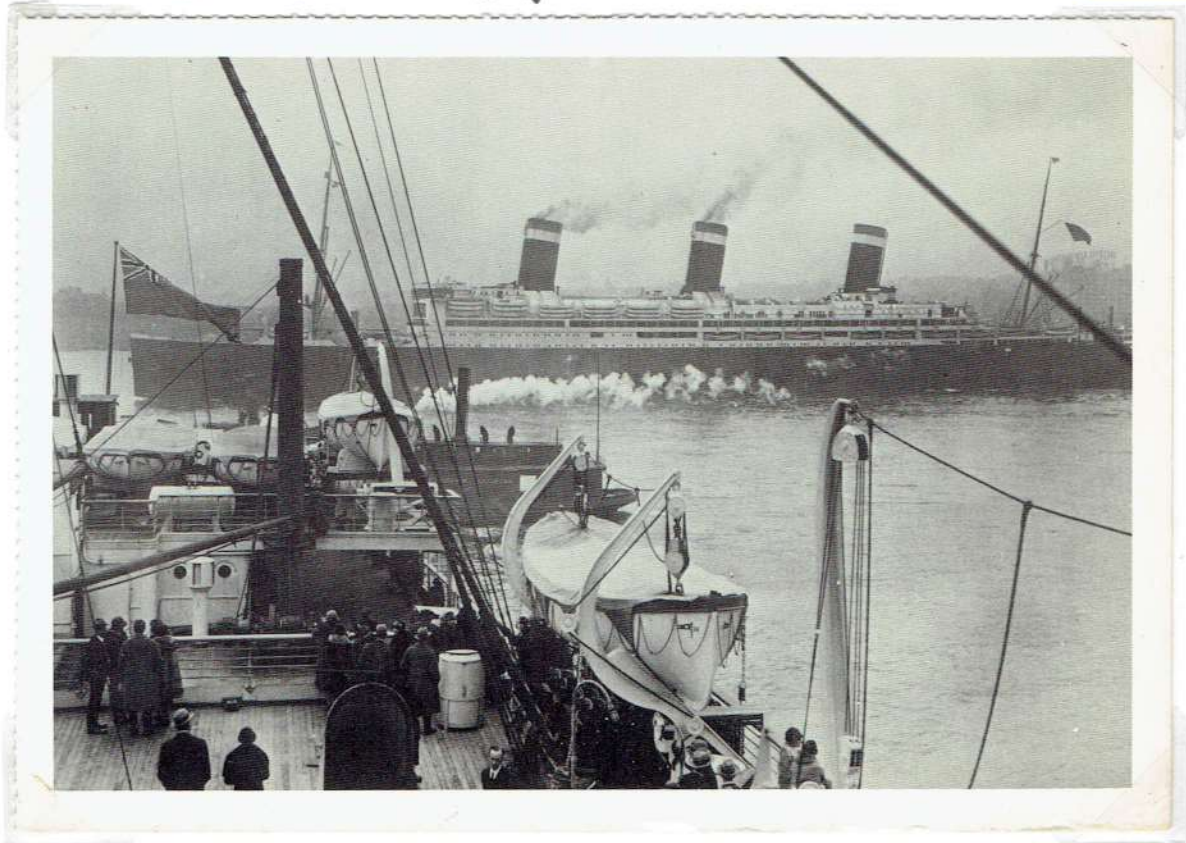
1949 PLACED ON EUROPE-CANADA RUN

1954 SOLD TO NEPTUNIA SHIPPING Co. PANAMA. 1957 LAID UP.

1959 BROKEN UP IN JAPAN AFTER 46 YEARS OF SERVICE

# LEVIATHAN

LOT 51



**ROUTE OPERATED** TRANSATLANTIC

**BUILDER** BLOHM & VOSS, HAMBURG. YARD NO 212. LAUNCHED 3 APRIL 1913

**PROPULSION** STEAM TURBINES. QUADRUPEL SCREW **SPEED.** **TONNAGE** 59,955 GRT

**DIMENSIONS** 289.2 x 30.5 m **PASSENGERS** 3,909 LATER REDUCED TO 3,008 IN 3-4 CLASSES

**HISTORY** EX HAMBURG-AMERIKA LINER, VATERLAND. INTERNED IN NEW YORK AT BEGINNING OF WORLD WAR I. SEIZED BY U.S. GOVT. AS A TROOPSHIP AND RENAMED LEVIATHAN.

1923 PUT INTO TRANSATLANTIC SERVICE WITH NEWLY FORMED UNITED STATES LINES

AS NO ALCOHOL COULD BE SOLD ABOARD US SHIPS DURING PROHIBITION IT WAS NOT POPULAR. FINALLY BESET WITH MECHANICAL BREAKDOWNS SHE WAS LAID UP IN SEPTEMBER 1934. 40 MONTHS LATER SHE WAS SOLD FOR DEMOLITION AT ROSYTH, SCOTLAND.



# NIEUW AMSTERDAM

LOT 51



**ROUTE OPERATED** ROTTERDAM - NEW YORK. CRUISING IN WINTER.

**BUILDER** ROTTERDAM. D.D. Co. LAUNCHED BY QUEEN WILHELMINA 10 APRIL 1937

**PROPULSION** STEAM. S.P. GEARED TURBINES. TWIN SCREW **SPEED** 20 KNOTS

**TONNAGE** 36,982 GRT **DIMENSIONS** 758' x 88'

**PASSENGERS:** ADJUSTABLE 574 TO 260 **FIRST CLASS** 583 TO 973 **TOURIST**

## HISTORY

1938 MAY - MAIDEN VOYAGE - TRANSATLANTIC

1940 WAR SERVICE AS TROOP CARRIER

1947. REFITTED AND RETURNED TO COMPANY SERVICE.

1971 USED ONLY FOR CRUISES

1974: JANUARY SOLD TO BROKEN UP IN TAIWAN

db

# PATRIOS



**ROUTE OPERATED** GREECE - AUSTRALIA VIA SUEZ CANAL

**BUILDER** HARLAND & WOLFF. BELFAST. LAUNCHED 1950.

**PROPULSION** B & W. TYPE DIESELS. TWIN SCREW **SPEED** 18 KNOTS **TONNAGE** 18,400 GRT **SIZE** 595' x 76'

**PASSENGERS** . 1400 ONE CLASS

**HISTORY** BUILT FOR UNION-CASTLE LINE AS BLOEMFONTEIN CASTLE.

1959 SOLD TO CHANDRIS COMPANY NAME CHANGED TO PATRIOS. PUT ON EUROPE - AUSTRALIA MIGRANT RUN.

JANUARY 8. 1958 THE BLOEMFONTEIN CASTLE TOOK ON BOARD THE CREW AND PASSENGERS OF THE DUTCH LINER KLIFFONTEIN WHICH WAS SINKING OFF MOZAMBIQUE

FEBRUARY 4. 1975. ARRIVED AT CITY OF DARWIN WHICH HAD BEEN DESTROYED BY A TROPICAL STORM. SERVED AS ACCOMMODATION SHIP UNTIL NOVEMBER.

RESUMED CRUISING FROM AUSTRALIAN PORTS AND AUSTRALIA - SINGAPORE SERVICE.



# PRINCESS MARGUERITE

LOT 52



ROUTE OPERATED DAILY VICTORIA - SEATTLE ALSO VANCOUVER - NANAIMO

BUILDER: FAIRFIELD SHIP BUILDING & ENGINEERING Co. GLASGOW 1949

PROPULSION STEAM-TURBO-ELECTRIC-TWIN SCREW SPEED 23k TONNAGE 5911 GRT

DIMENSIONS 374' X 56' PASSENGERS 2000.

HISTORY BUILT FOR BRITISH COLUMBIA COASTAL SERVICES. VANCOUVER-SEATTLE.

OPERATED BY C.P.R. WENT TO B.C. S/S Co WHICH WAS TAKEN OVER BY STENA IN 1988.

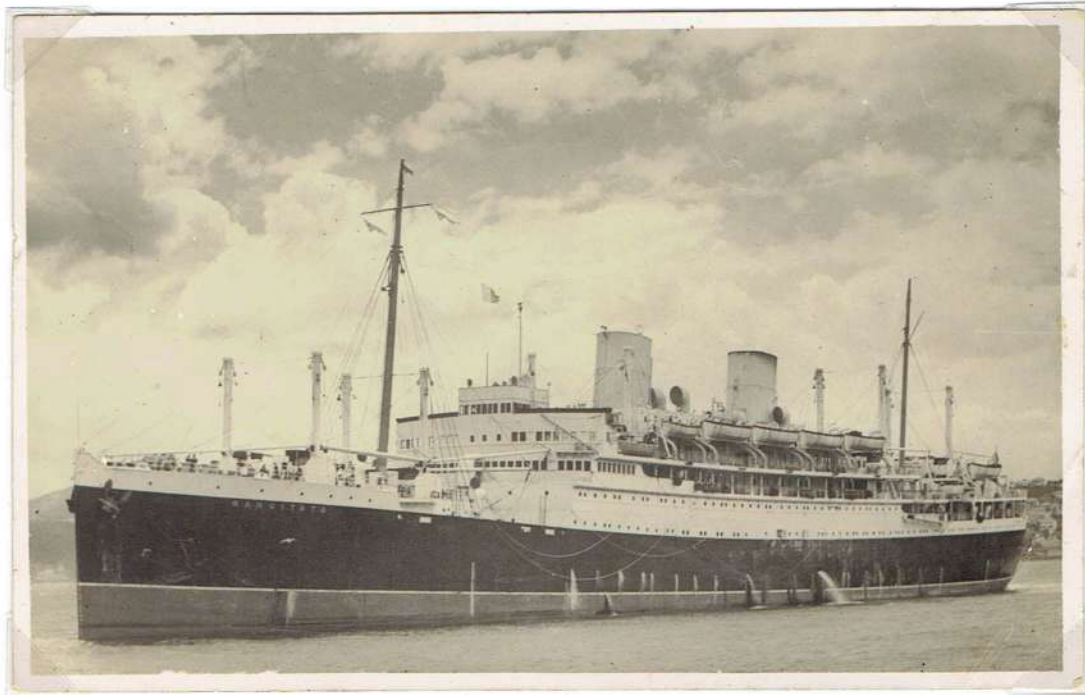
COMPLETELY RESTORED AFTER PUBLIC OUTCRY OVER HER PROPOSED SCRAPPING





# RANGITATA

LOT 52



**ROUTE OPERATED** SOUTHAMPTON - WELLINGTON

**BUILDER** JOHN BROWN . CLYDEBANK . SCOTLAND

**PROPULSION** M/S. DIESEL . TWIN SCREW **SPEED** 16 KNOTS **TONNAGE** 16,737 GRT **SIZE** 553 x 70'

**PASSENGERS** 100 FIRST CLASS 85 SECOND 410 THIRD

**HISTORY** LAUNCHED 26 MARCH 1929. MAIDEN VOYAGE 22 NOVEMBER 1929.

1941 DURING WWII SERVED AS A TACOPTRANSPORT

1948 REFIT . NEW ENGINES . 16969 GRT PASSENGERS 123 1st 288 TOURIST

1949 FIRST POSTWAR VOYAGE LONDON - WELLINGTON

1962 SOLD TO DUTCH INTERESTS TO BE BROKEN UP. SOLD AGAIN TO YUGOSLAVIA RENAMED  
RANG FOR VOYAGE THERE

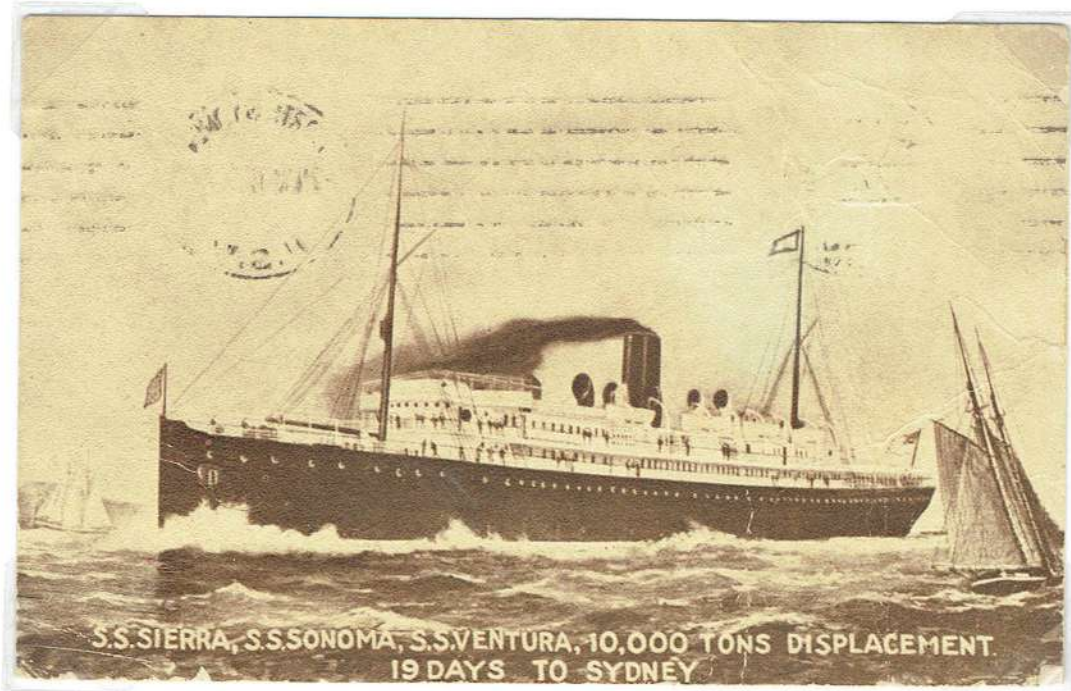
JULY 21 ARRIVED AT SPLIT. BROKEN UP BY BRODOSPAS.

OCEANIC S/S Co.

U.S.A.

# SIERRA

LOT 53



**ROUTE OPERATED** SAN FRANCISCO - AUSTRALIA.

**BUILDER:** WILLIAM CRAMP & SONS. PHILADELPHIA.

**PROPULSION**

**SPEED** 17 KNOTS **TONNAGE** 6135 GRT

**DIMENSIONS:** 120x15m **PASSENGERS** 231 1st 48 2nd 20 Third.

**HISTORY** FIRST VOYAGE 1900 LAID UP IN SAN FRANCISCO IN 1907.

1910. PLACED ON SAN FRANCISCO - HONOLULU RUN

1915 REFITTED AND PUT ON AUSTRALIA SERVICE

1917 COMMANDEERED AS A TROOPSHIP DURING WORLD WAR I.

1919 SOLD TO POLISH - AMERIKA LINE RENAMED GDANSK.

1923 RESOLD TO OCEANIC AND RENAMED SIERRA

1926 SOLD TO MATSON LINE. OCEANIC S/S CO TAKEN OVER BY MATSON

1932 LAID UP IN SAN FRANCISCO

1934 BROKEN UP IN JAPAN



HAKONE LINE

JAPAN

# SOUM MARU

LOT 53



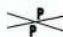


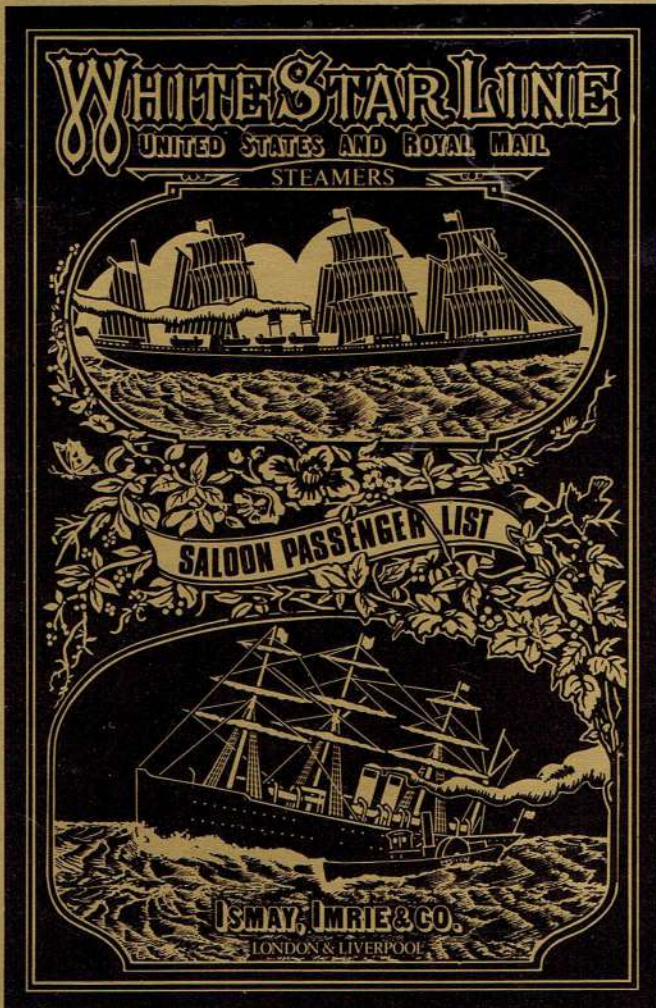
# TEUTONIC

LOT 53



SM620 OLD CUNARDERS - S.S. TEUTONIC (WHITE STAR) AT LIVERPOOL c1890

Pamlin Prints, Croydon 



WHITE STAR'S FIRST TWIN-SCREW LINER, BUILT WITHOUT PROVISION FOR SAIL POWER. SHE WAS THE FIRST BRITISH TRANSATLANTIC LINER TO BE BUILT TO ADMIRALTY SPECIFICATIONS FOR USE AS AN ARMED MERCHANT CRUISER IN TIME OF WAR, AND WAS USED AS SUCH IN 1914.

**BUILDER** HARLAND & WOLFF. BELFAST

**PROPULSION** TRIPLE EXP TWIN SCREW.

**SPEED** 19 KN **SIZE** 172M X 17.6M **Tonn** 9984 GRT

**PASSENGERS** 300 1st 190 2nd 1000 3rd.



# VASCO DA GAMA

LOT 54



1961. 21K 23306 GRT 196' X 26'

734 passengers . panama registration

EX INFANTE DOM HENRIQUE





FREIE DEUTSCHE GEWERKSCHAFTSBUND (FREE GERMAN TRADE UNION MOVEMENT)

DDR. EAST GERMANY

# VOLKERFREUNDSCHAFT

LOT 54



**ROUTE OPERATED:** CRAUISING MAINLY OUT OF ROSTOCK.

**BUILDER:** A.B. GOTAVERKEN. GOTHENBURG. SWEDEN. LAUNCHED 1948.

**PROPULSION:** 2 GOTAVERKEN DIESELS. TWIN SCREW. **SPEED** 18 KNOTS **TONNAGE** 12,387 GRT

**DIMENSIONS:** 525 x 69' **PASSENGERS:** 568 ONE CLASS.

## HISTORY

BUILT FOR SWEDISH AMERICA LINE AS STOCKHOLM (THE THIRD OF THAT NAME)

IN JULY 1956 THE STOCKHOLM COLLIDED WITH AND SANK THE ANDREA DORIA. SHE WAS

TAKEN OVER BY PRESENT OWNERS IN 1960 AND BECAME THE WORLD'S FIRST TRADE UNION HOLIDAY SHIP.

7. Kuba-Reise 1972



Friedrich Fleischer  
9162 Auerbach/Erz  
E Thälmann-St 98 DDR



SCANDINAVIAN SEAWAYS (DET FORENEDE DAMPSKIBS SELSKAB . AKTS (DFDS)

DENMARK

# WINSTON CHURCHILL

LOT 54



ROUTE OPERATED NEWCASTLE (UK) - ESBJERG - HAMBURG

BUILDER CANTIERI NAVALI DEL TIRRENO - GENOVA

PROPULSION TWO B&W 10 CYLINDER DIESEL ENGINES SPEED 22k. TONNAGE 2658 GRT SIZE 140.67 x 22.55M

PASSENGERS 750 PLUS 180 VEHICLES

HISTORY MAIDEN VOYAGE 2 JUNE 1967. RAN ABRUND 1969 OUT OF OPERATION TILL MARCH 1970

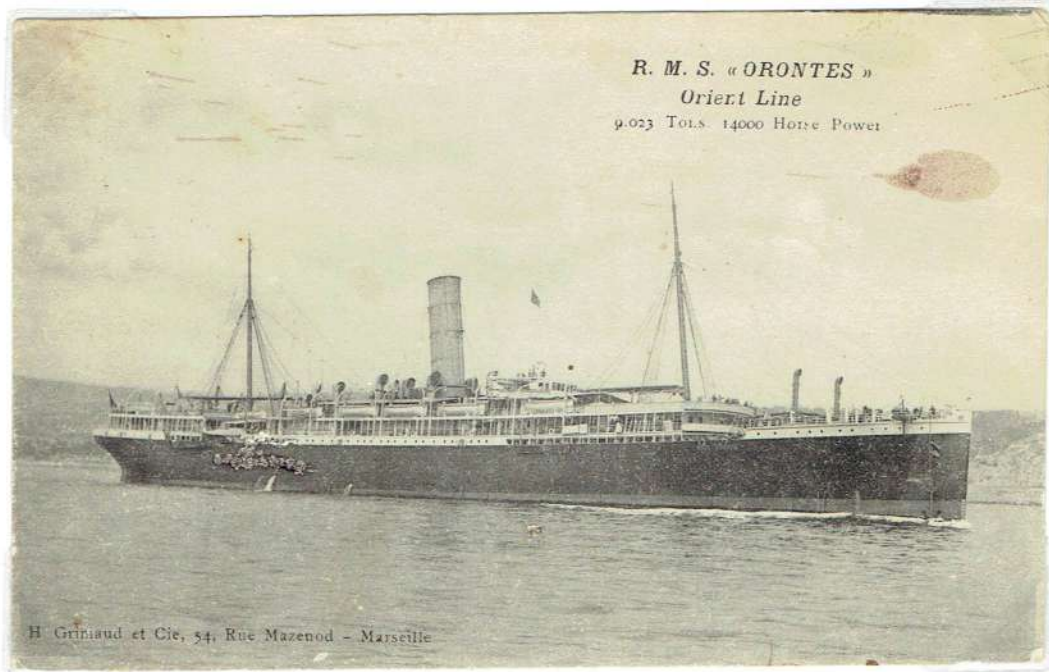




# ORONTES

1902

LOT 55



**ROUTE OPERATED** ENGLAND - AUSTRALIA VIA SUEZ CANAL

**BUILDER** FAIRFIELD SHIPBUILDING & ENGINEERING Co. LTD. GLASGOW, SCOTLAND

**PROPULSION** TWIN SCREW TWO SETS OF QUADRUPLE EXPANSION ENGINES ~ COAL FIRED

**TONNAGE** 9028 ~~6965~~ **SPEED** 18 KNOTS

**DIMENSIONS:** LENGTH 156.5 M **BEAM** 18 M **PASSENGERS:** 1<sup>ST</sup> & 2<sup>ND</sup> CLASS 320 3<sup>RD</sup> CLASS 323

**THURSDAY OCTOBER 24, 1902** MAIDEN VOYAGE ENGLAND TO BRISBANE ~ OVER THE NEXT 12 YEARS ORONTES MADE 53 ROUND VOYAGES ON THE AUSTRALIA RUN

**WORLD WAR I (1914-1919)** ORONTES TRANSPORTED AUSTRALIAN TROOPS TO EUROPE AT THE START OF THE WAR AND BROUGHT HOME THE WOUNDED LATER.

**1919** RETURNED TO THE UK-AUSTRALIA RUN, BUT BY NOW, SHE WAS NOT UP TO THE HIGH STANDARDS OF THE COMPANY, AND MADE HER FINAL TRIP ON FEBRUARY 19, 1921.

LAI D UP UNTIL SHE WAS BROKEN UP IN 1926

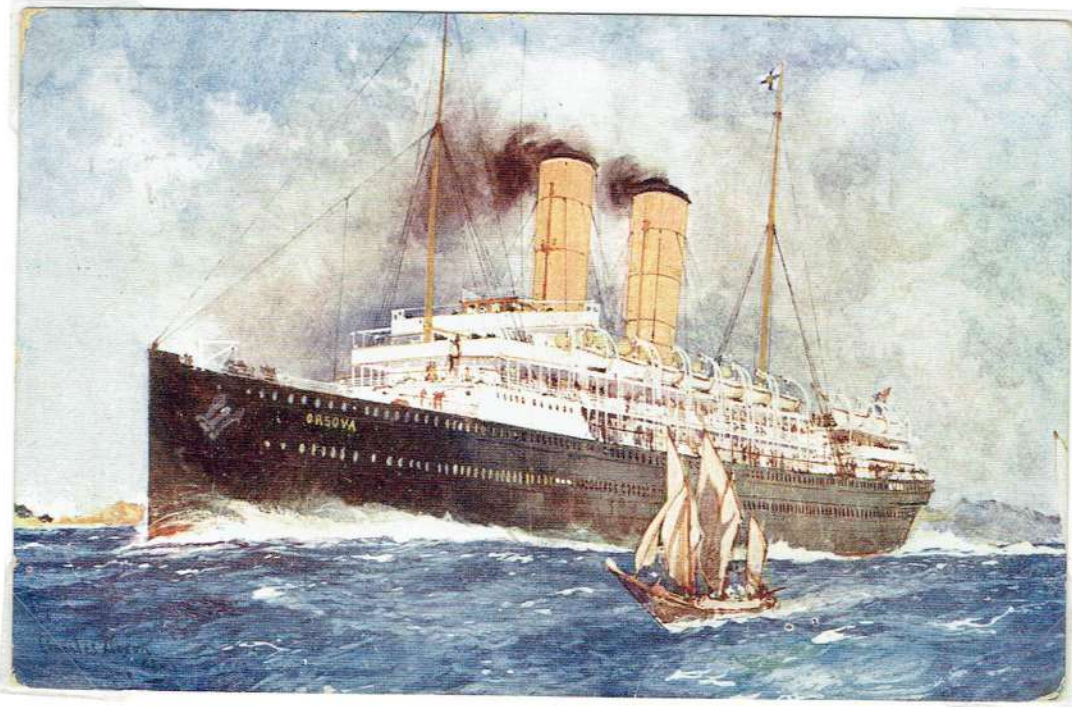
db



# ORSOVA (FIRST OF THIS NAME)

1909.

LOT 55



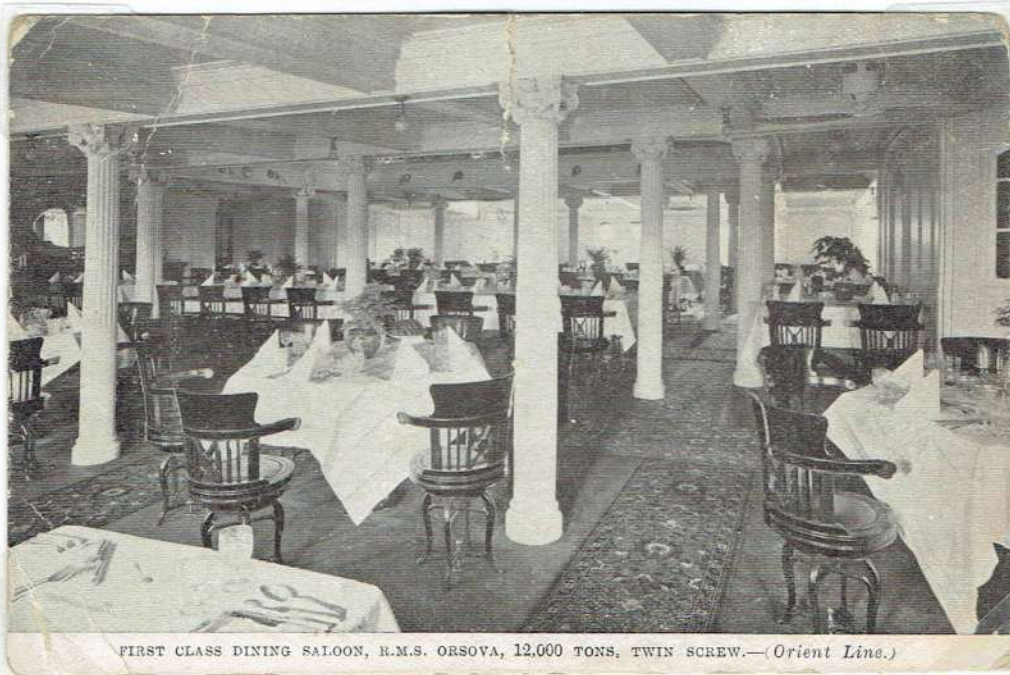
**ROUTE OPERATED** ENGLAND TO AUSTRALIA VIA SUEZ CANAL

**BUILDER** JOHN BROWN & Co. CLYDEBANK. SCOTLAND 1909.

**PROPULSION** TWIN SCREW. QUADRUPLE EXPANSION. STEAM.

**TONNAGE** 12026 **L** 163m **B** 19m **SPEED** 18 knots **PASSENGERS:** 1st 280 2nd 130 3rd 900

AFTER WAR SERVICE, DURING WHICH THE ORSOVA WAS TORPEDGED IN 1917, SHE RESUMED THE SERVICE TO AUSTRALIA IN 1919 AND WAS A REGULAR VISITOR UNTIL TAKEN OFF IN 1936.



FIRST CLASS DINING SALOON, R.M.S. ORSOVA, 12,000 TONS, TWIN SCREW.—(Orient Line.)

FIRST CLASS DINING SALOON POSTMARKED 1911.

PUB. OFFICIAL POSTCARD.





# ORONSAY

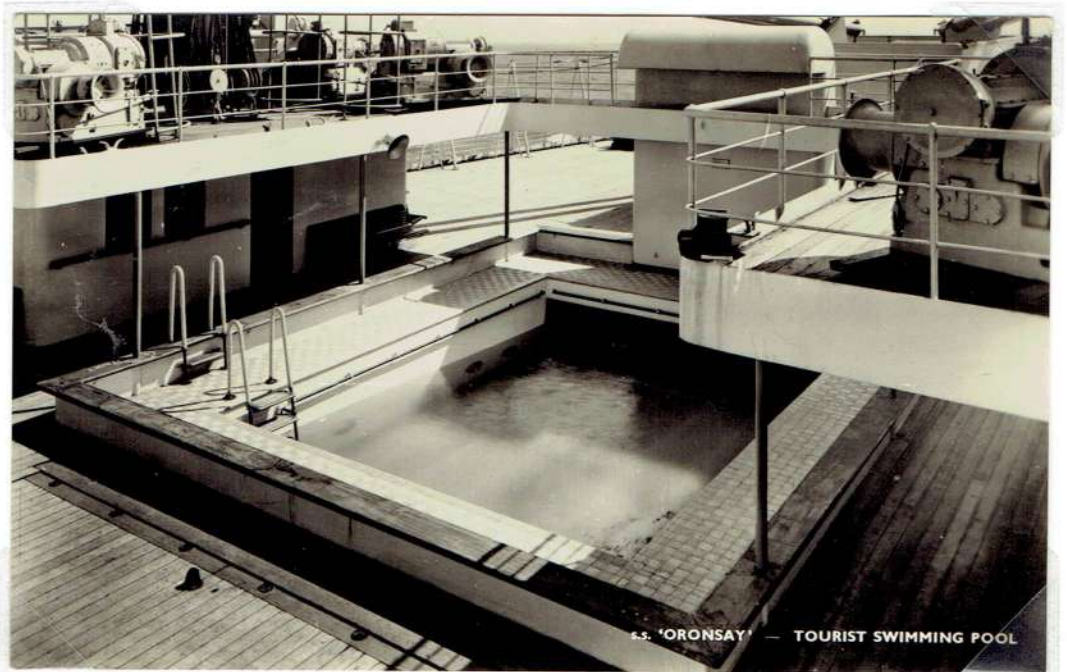
1951

LOT 55



TOURIST 2 BERTH CABIN.

TOURIST SWIMMING POOL



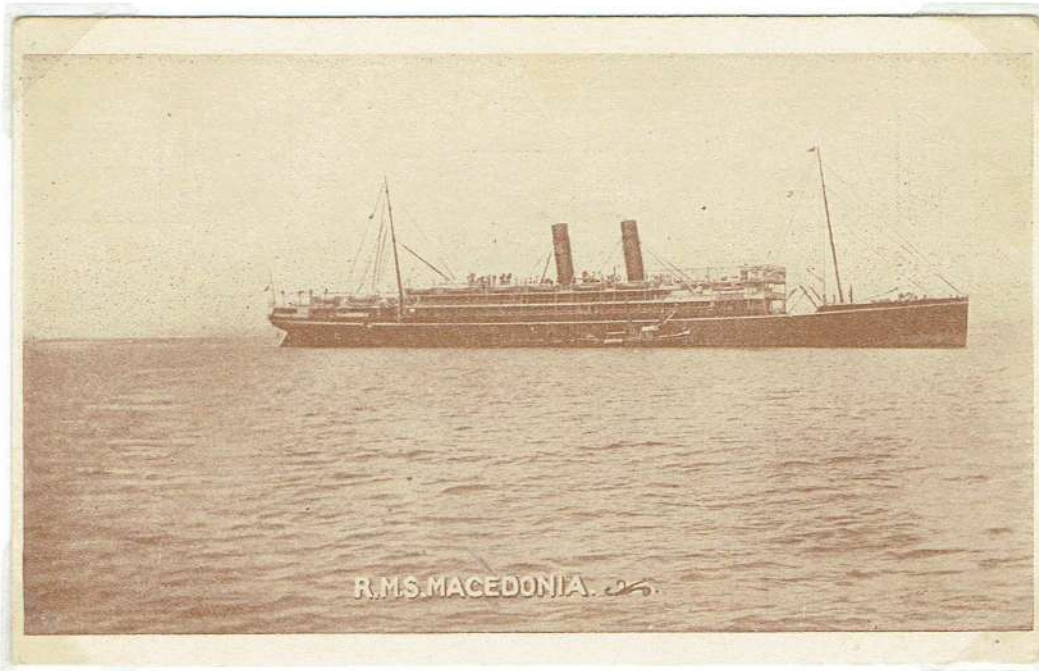
TOURIST 4 BERTH CABIN.



# MACEDONIA

1904.

LOT 56



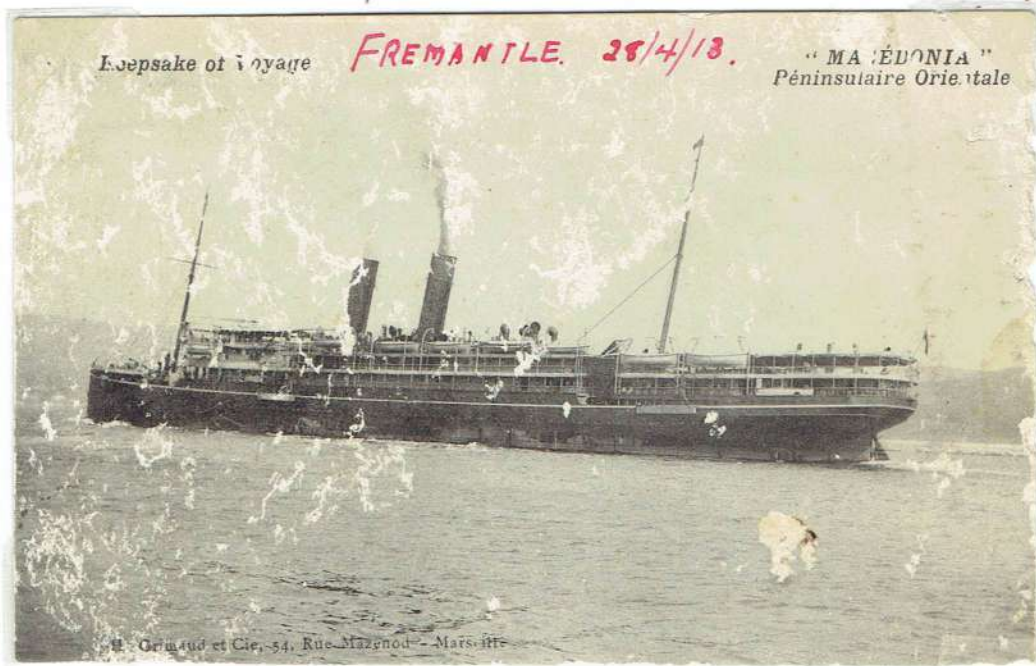
ROUTE OPERATED: ENGLAND - AUSTRALIA ~ VIA SUEZ CANAL

BUILDER: HARLAND & WOLFF. BELFAST. NORTHERN IRELAND

PROPULSION: TWIN SCREW QUADRUPLE EXPANSION. STEAM SPEED: 15 KNOTS

LENGTH: 162m BEAM: 18m. PASSENGERS: 1st: 377 2nd: 187. TONNAGE: 10512 GRT.

MADE HER MAIDEN VOYAGE IN 1904. DURING THE FIRST WORLD WAR, COMMANDEERED AS AN ARMED MERCHANT CRUISER. 1921, PLACED ON THE FAR EAST RUN. BROKEN UP IN JAPAN IN 1931.



Keepsake of voyage

FREMANTLE. 28/4/13.

"MACEDONIA"  
Péninsulaire Orientale

H. Ormrod et Cie, 54, Rue Mazenod - Marseille

ISSUED ABOARD SHIP IN 1913.

MACEDONIA: MOUNTAINOUS BALKAN COUNTRY OF ANCIENT GREECE, NOW FORMING PARTS OF GREECE AND YUGOSLAVIA



# NALDERA

1920.

LOT 56



**ROUTE OPERATED:** ENGLAND TO AUSTRALIA VIA SUEZ CANAL

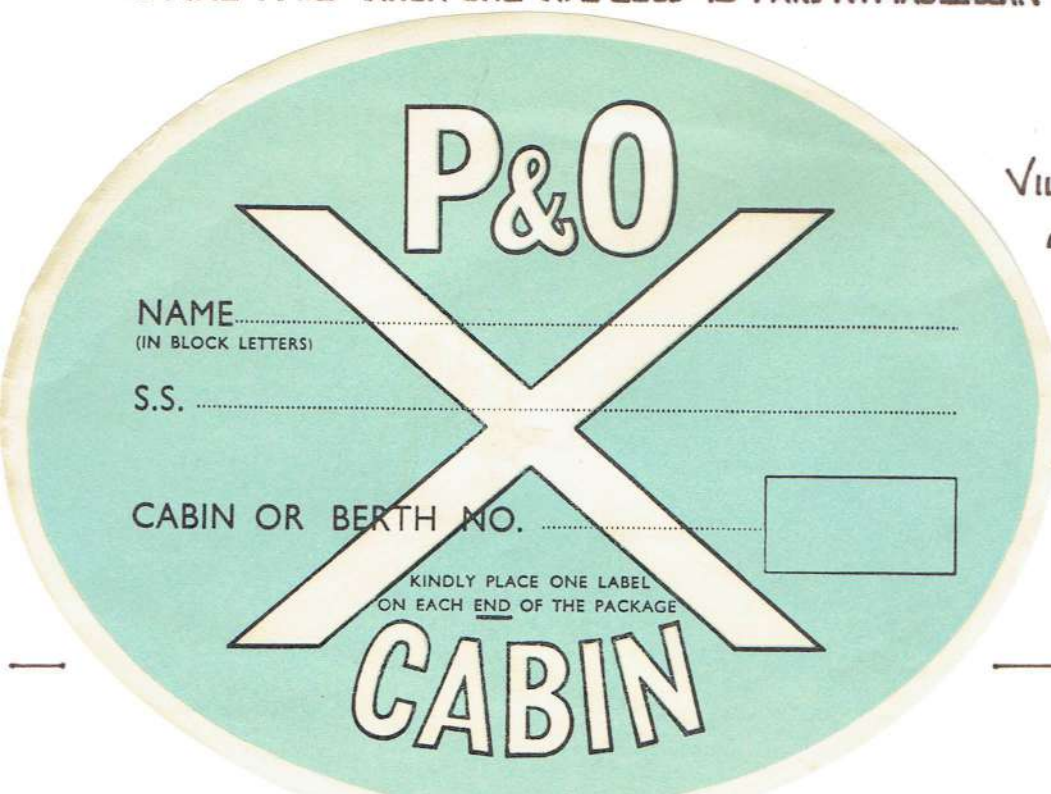
**BUILDER:** CAIRD & Co. GREENOCK. SCOTLAND.

**PROPULSION:** COAL FIRED TWIN SCREW · QUADRUPLE EXPANSION

**SPEED:** 17 1/2 KNOTS

**LENGTH:** 183m **BEAM:** 20m. **PASSENGER:** 1st class 426 2nd 274 **TONNAGE:** 16,088 GRT

**LAUNCHED** 29-12-1917, TROOPSHIP DURING WORLD WAR I. ENTERED SERVICE WITH THE COMPANY ON THE 27 MARCH 1920. SERVED ON THE LONDON - SYDNEY RUN UNTIL 1938 WHEN SHE WAS SOLD TO P AND W. MACLELLAN FOR DEMOLITION.



NALDERA:  
VILLAGE IN THE SIMLA HILLS  
OF NORTHERN INDIA.  
NOW IN HIMACHAL  
PRADESH STATE





# STRATHEDEN

LOT 56



TOURIST CLASS PUBLIC ROOMS

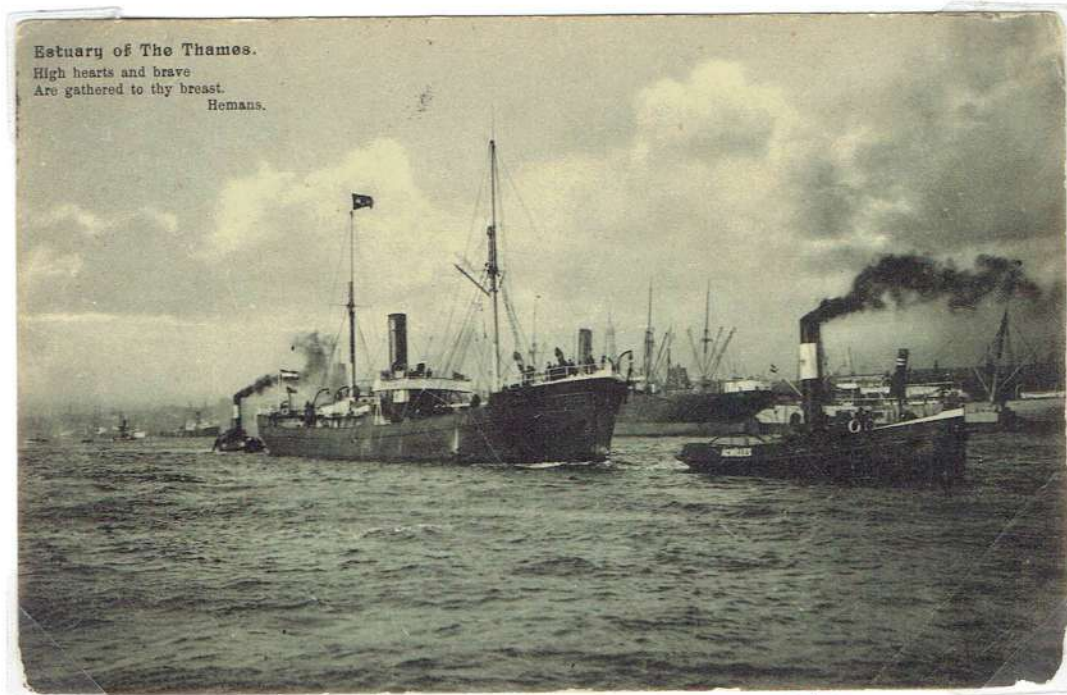


FIRST CLASS - TWO BERTH INSIDE CABIN c 1948.

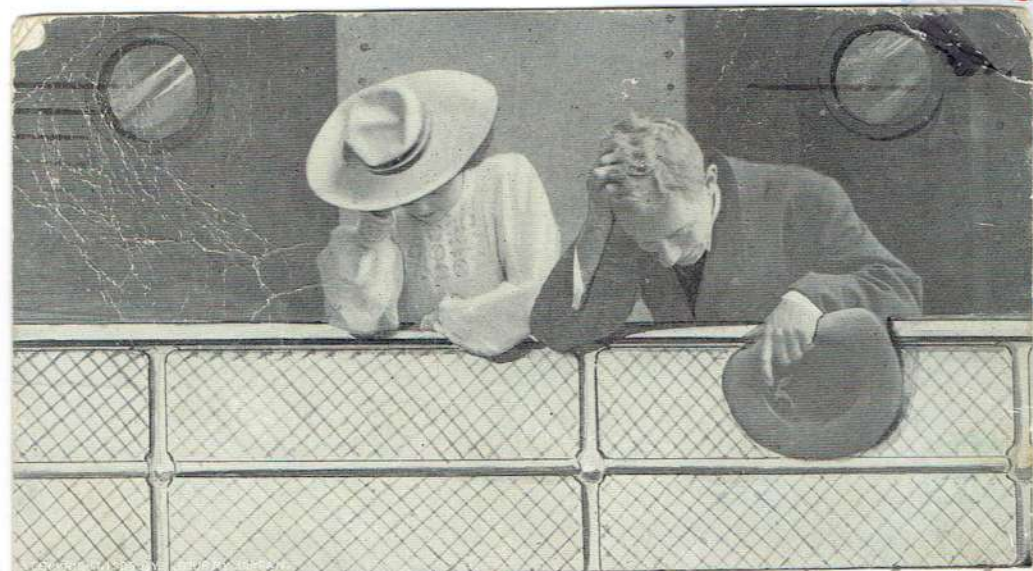
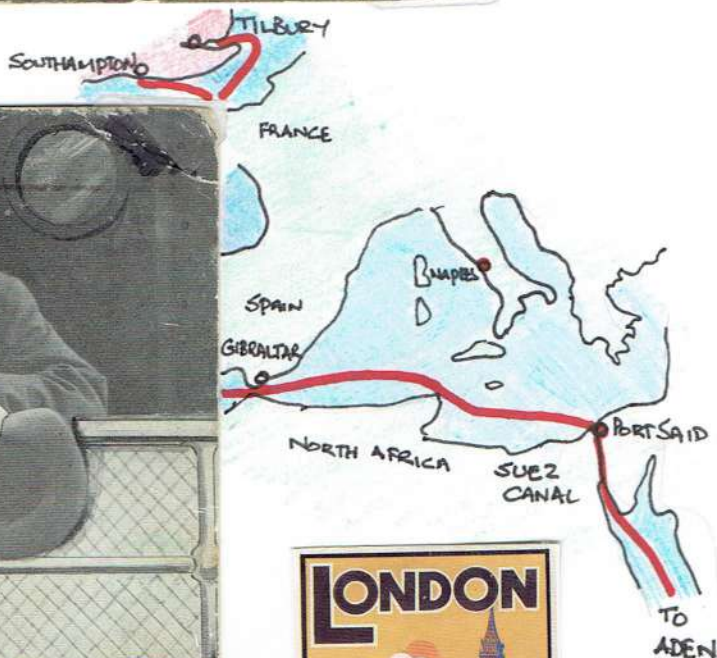




FROM TILBURY DOCKS IN LONDON, OR SOUTHAMPTON, INTO THE MEDITERRANEAN WITH MAYBE A QUICK LOOK AT NAPLES, THEN THROUGH THE SUEZ CANAL TO ADEN, BOMBAY AND COLOMBO AND ON TO FREMANTLE ~ OR THE LONG HAUL AROUND THE CAPE OF GOOD HOPE AND ACROSS THE INDIAN OCEAN TO AUSTRALIA.



LEAVING TILBURY .1907.



230 All going out and nothing coming in. We are returning by the R.M.S. Mowera leaving Vancouver Nov 8 - expect to reach Sydney Dec 3 - 1907.

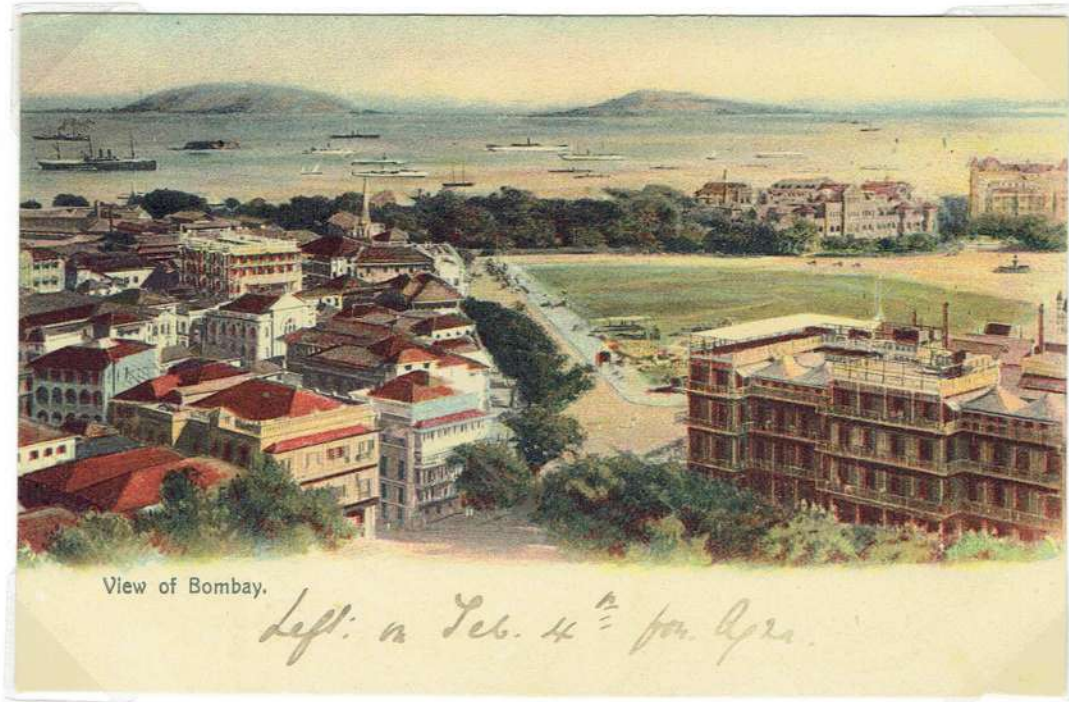
'ALL GOING OUT AND NOTHING COMING IN - 1907-



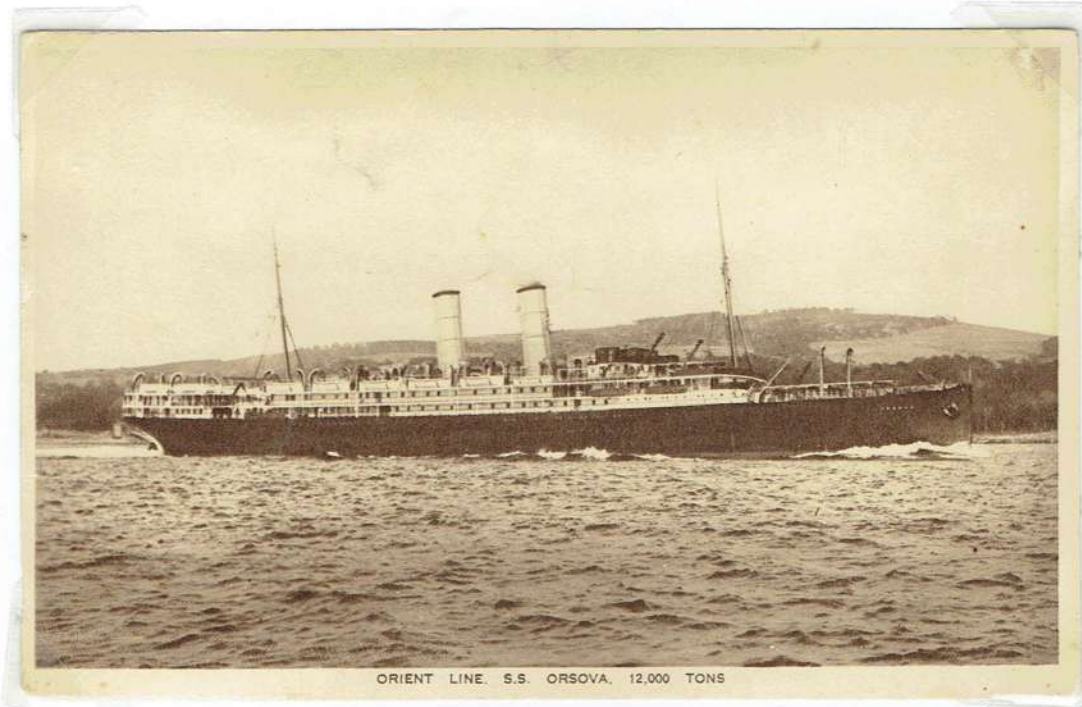


FROM ADEN NORTHEAST ACROSS THE ARABIAN SEA TO THE GREAT INDIAN SEAPORT OF BOMBAY.

LOT 57



PUBLISHER NOT KNOWN • 1912.



PUB: ORIENT LINE P/M 1910

ORSOVA

ORIENT LINE ~ MAIDEN VOYAGE 1909.

1915: TROOPSHIP 1917: TORPEDGED 1919 REPAIRED

1919-1936 UK-AUSTRALIA VIA SUEZ CANAL.

12026 TONNES SPEED 18 KNOTS PASSENGERS: FIRST CLASS 280 SECOND CLASS 130 THIRD CLASS 900.

TWIN SCREW • QUADRUPLE EXPANSION STEAM.



SHIPS OF THE ABERDEEN & COMMONWEALTH SHIPPING LINE.

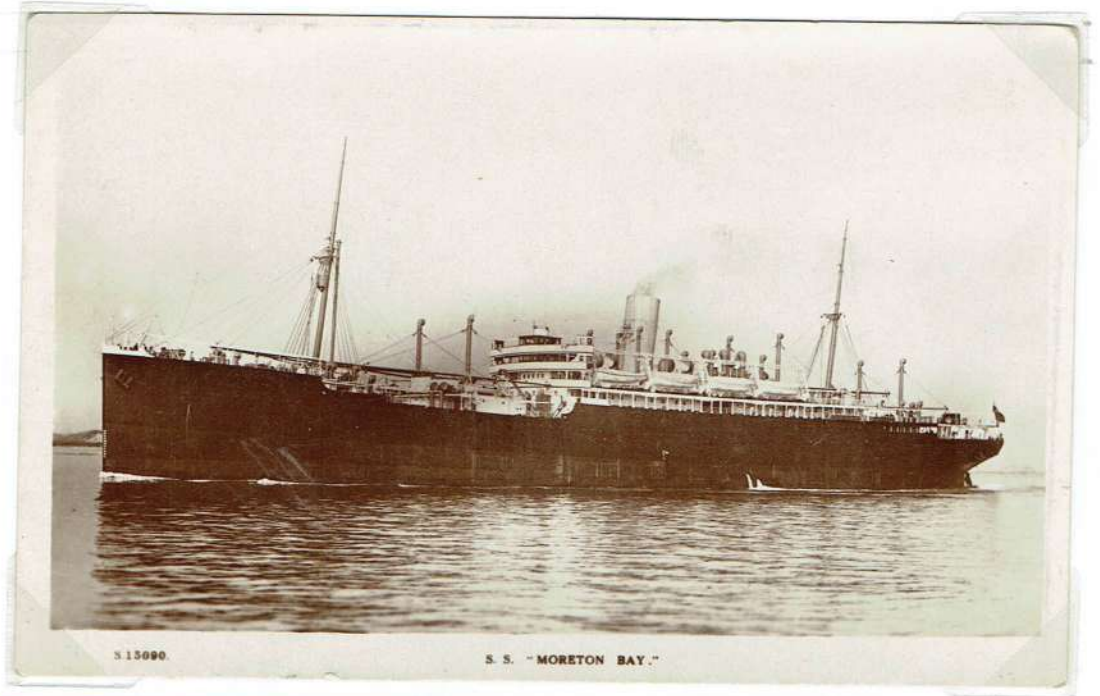
LOT 57

# MORTON BAY

FIRST VOYAGE 1921. 1939-47 WAR WORK  
RESUMED SERVICE ON THE UK-AUSTRALIA ROUTE UNTIL

SCRAPPED IN 1957.

PUB: W.H.S. KINGSMAY LERIES .



PUB: HOWARD JONES ROBERTS & LEETE LTD  
BURY ST. LONDON EC3.

# JERVIS BAY

FIRST VOYAGE TO AUSTRALIA IN 1922 .

IN 1939, AT THE START OF WORLD WAR TWO, THE JERVIS BAY WAS  
COMMANDEERED AS AN ARMED MERCHANT CRUISER. IN 1940 SHE WAS SUNK WHILE  
DEFENDING A NORTH ATLANTIC CONVOY FROM THE GERMAN BATTLESHIP, THE —  
ADMIRAL SCHEER ~ COMPLETELY OUTGUNNED AND OUTPACED, THE JERVIS BAY  
NEVERTHE LESS TURNED TOWARDS THE BIGGER SHIP IN A VAIN ATTEMPT TO INFLECT CLOSE



# ORIZABA

1905

LOT 58



THE **ORIZABA** BECAME THE 22<sup>ND</sup> VESSEL TO ENTER SERVICE ON THE AUSTRALIA - U.K. ROUTE FOR ORIENT LINE.

SHE COMMENCED HER MAIDEN VOYAGE ON 30. SEPTEMBER. 1886.

ON 16 FEBRUARY 1905 \_\_\_\_\_

THE **ORIZABA** WAS APPROACHING FREMANTLE WHEN, DUE TO POOR VISIBILITY, ATTRIBUTED TO BUSHFIRES, SHE SAILED TO THE WEST OF ROTTNESST ISLAND INSTEAD OF THE EAST. AS A RESULT, SHE RAN AGROUND AND HOLED HERSELF UNDER THE ENGINE ROOM, BECOMING A TOTAL LOSS.

**BUILDERS:** BARRON SHIPBUILDING CO. BARRON 1886.

**PARTICULARS:** 6077 GROSS TONS 460 FT X 49 FT.

**MACHINERY:** TRIPLE-EXPANSION ENGINES SINGLE SCREW **SPEED:** 15 KNOTS

**PASSENGERS:** 126 FIRST CLASS. 154 SECOND CLASS 400 THIRD CLASS.

dh



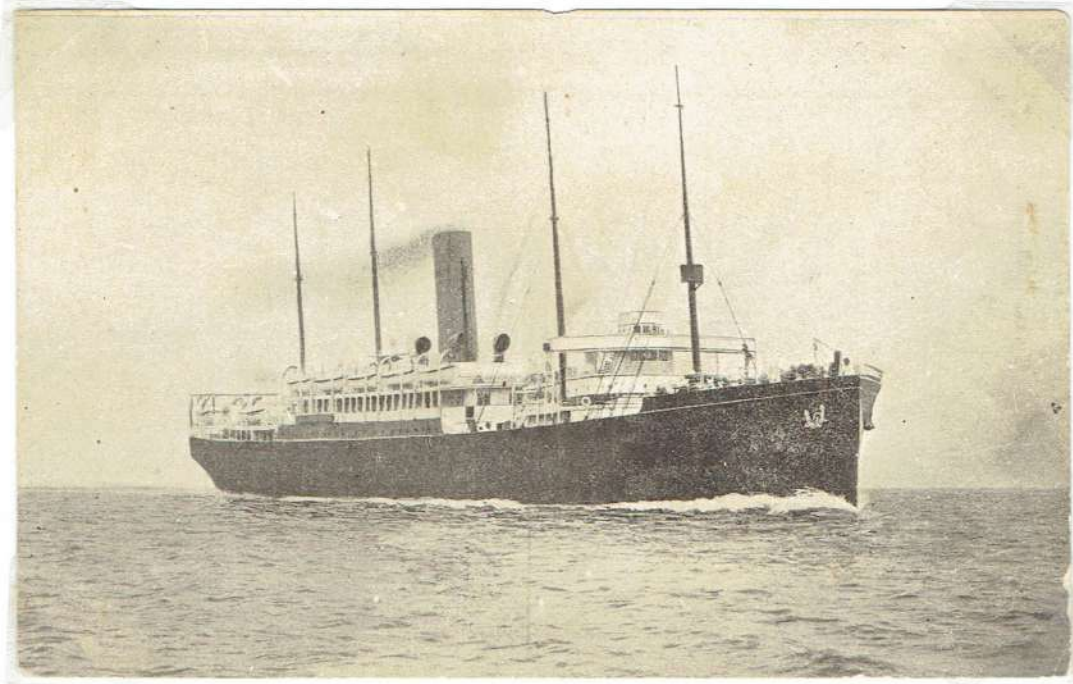


# PERICLES

ABERDEEN LINE

1910

LOT 58



ROUTE OPERATED ENGLAND - AUSTRALIA VIA CAPE OF GOOD HOPE. AFRICA

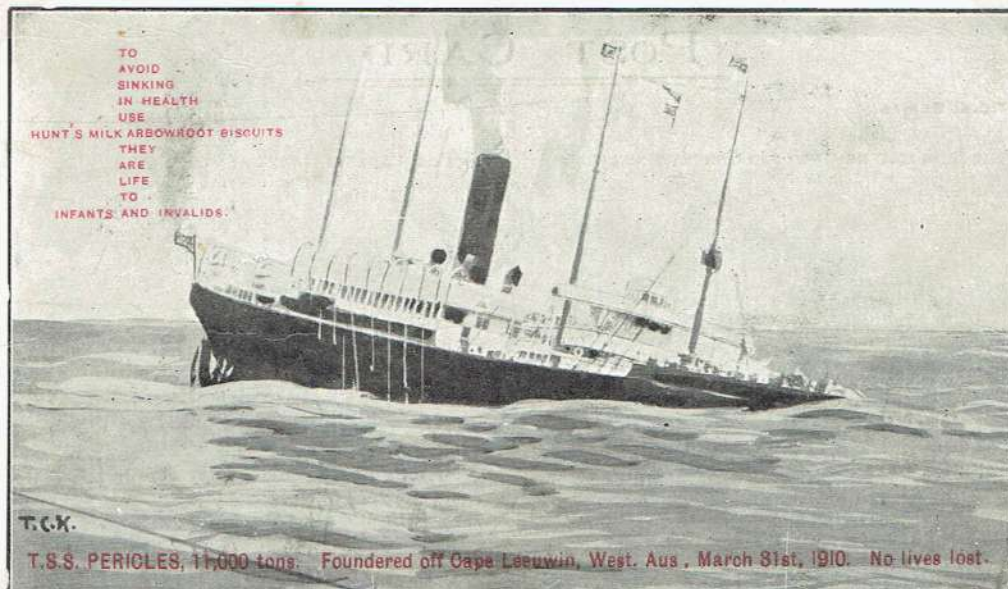
BUILDER HARLAND AND WOLFF. BELFAST. NORTHERN IRELAND

PROPULSION TWIN SCREW. TRIPLE EXPANSION STEAM

TONNAGE 10,925 LENGTH 153m BEAM 19m SPEED 14 KNOTS.

1908 FIRST VOYAGE TO AUSTRALIA

1910 AFTER LEAVING BRISBANE EN ROUTE TO ENGLAND, SHE STRUCK AN UNCHARTED UNDERWATER REEF SIX MILES OFF CAPE LEWIN. WESTERN AUSTRALIA. THE CALM SEAS AND CLEAR SKY ENABLED ALL PASSENGERS AND CREW TO TAKE TO THE BOATS AND LAND SAFELY ASHORE ~



TWO AND A HALF HOURS LATER, THE SHIP WENT DOWN.

LOCAL WA POSTCARD 1910.



" TO AVOID SINKING IN HEALTH USE HUNT'S MILK ARROWROOT BISCUITS THEY ARE LIFE TO INFANTS AND INVALIDS "

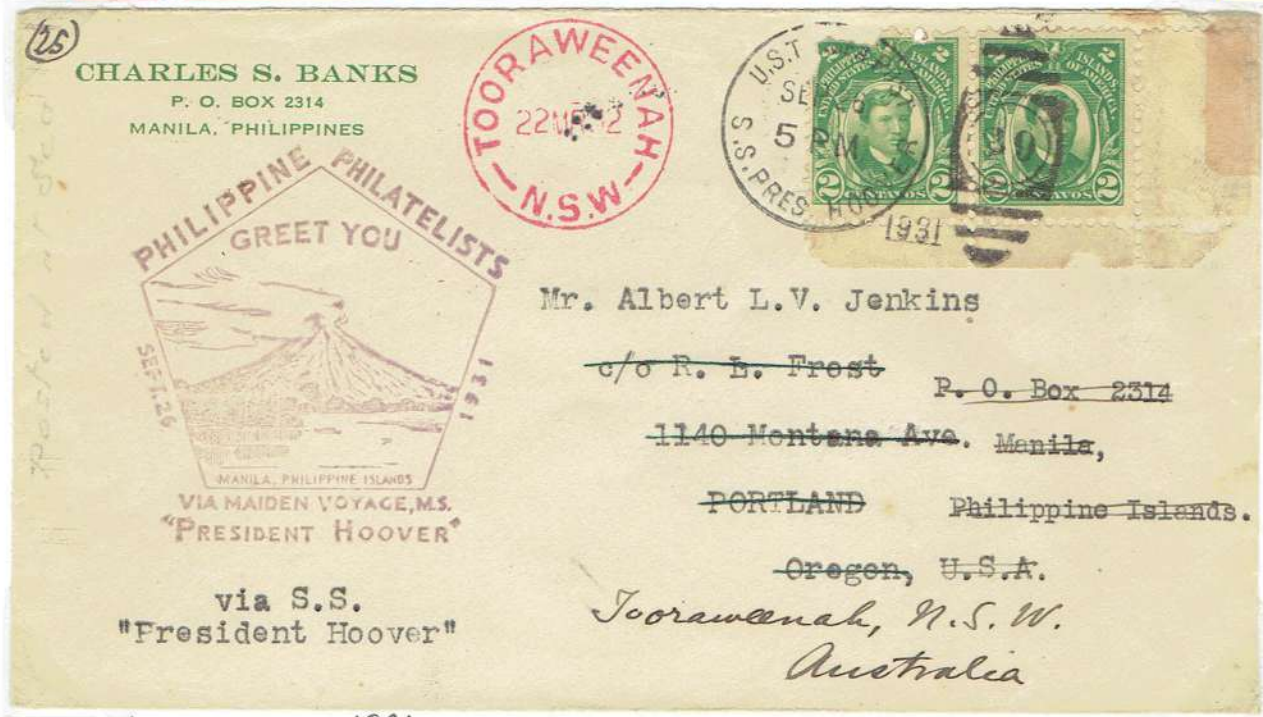
T.C.K.  
T.S.S. PERICLES, 11,000 tons. Foundered off Cape Leeuwin, West. Aus., March 31st, 1910. No lives lost.



# PRESIDENT HOOVER

1937

LOT 58

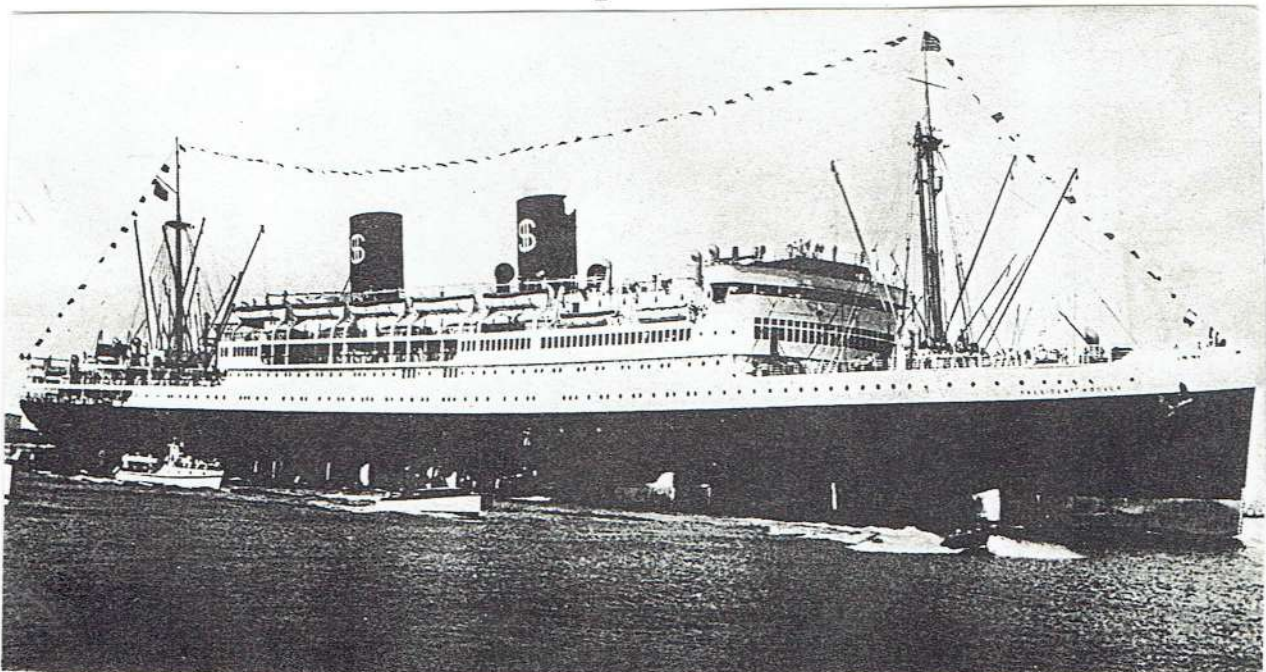


MAIDEN VOYAGE COVER 1931. U.S.A. DOLLAR LINE.

10 DECEMBER 1937

WHILE SAILING FROM KOBE, JAPAN, TO MANILA, THE PRESIDENT HOOVER STRUCK A REEF OFF THE ISLAND OF HOIGHOTO AT 01:00 HRS. THE PASSENGERS AND CREW ABANDONED THE BADLY DAMAGE SHIP.

AFTER SEVERAL UNSUCCESSFUL ATTEMPTS TO RELOAD THE LINER, SHE WAS SOLD TO A JAPANESE BREAKER AND SCRAPPED ON THE SPOT.



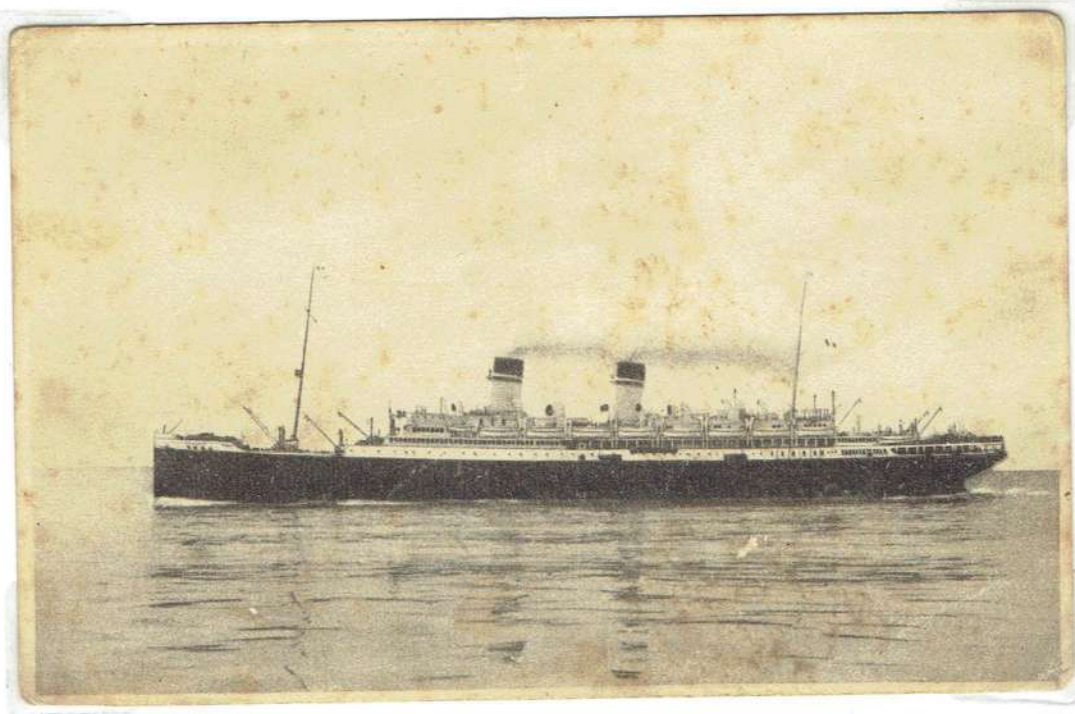
12



# ROMA - AQUILA

1945

LOT 59



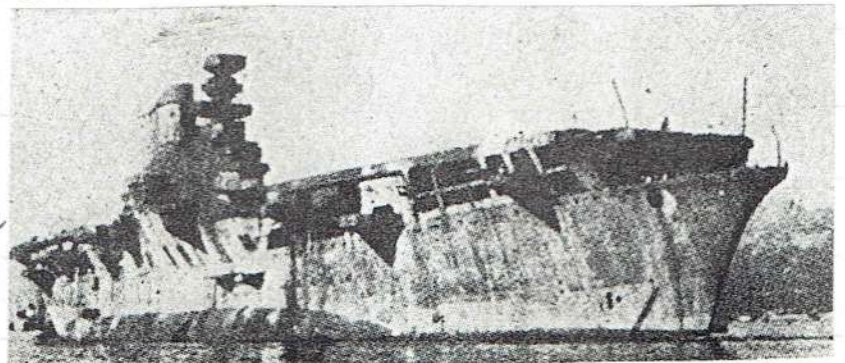
BUILT IN 1926 AS THE PRIDE OF THE NAVIGAZIONE GENERALE ITALIANA FLEET - GENOA TO NEW YORK.

IN 1940 THE ROMA WAS TAKEN OVER BY THE ITALIAN NAVY AND CONVERTED TO AN AIRCRAFT CARRIER AND RENAMED AQUILA.

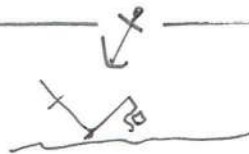
TAKEN OVER BY THE GERMANS.

1944 BADLY DAMAGED BY SEVERAL DIRECT HITS IN AN ALLIED AIRRAID.

19 APRIL 1945



THE AQUILA WAS ATTACKED AND SUNK IN GENOA HARBOUR BY ITALIAN ONE-MAN TORPEDDES. THIS PREVENTED THE GERMANS FROM SINKING THE SHIP TO BLOCK THE HARBOUR ENTRANCE, AS HAD BEEN FEARED THEY MIGHT DO.  
1946: THE WRECK WAS RAISED AND TOWED TO LA SPEZIA FOR SCRAP.

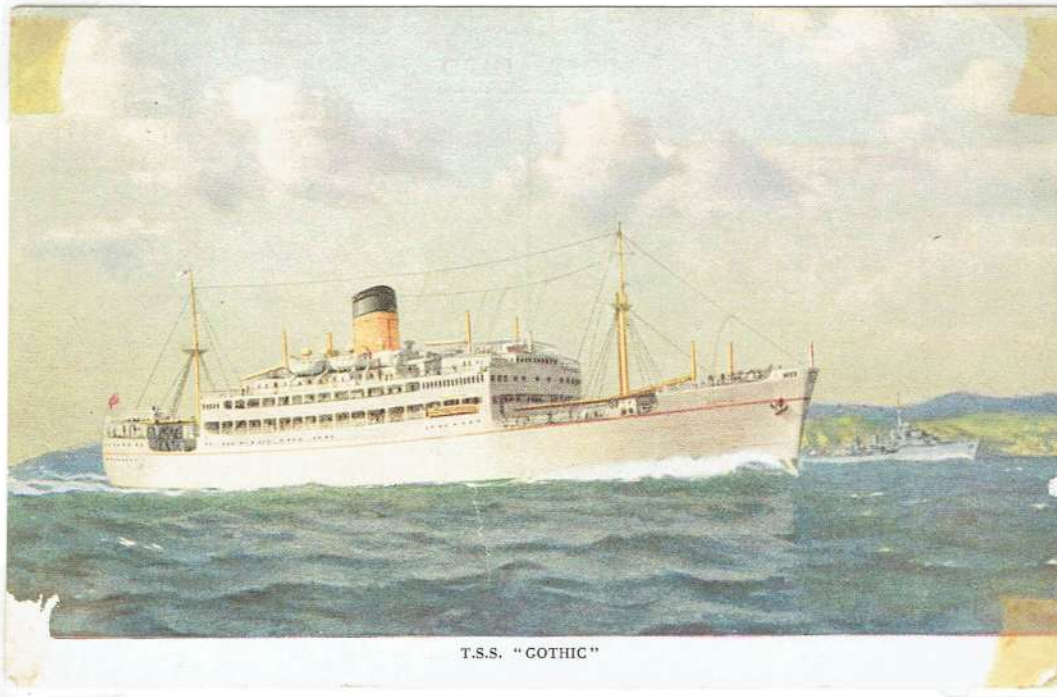




# GOTHIC

1968

LOT 59



T.S.S. "GOTHIC"

BUILT IN 1948 FOR SHAW SAVILL & ALBION FOR THEIR UK-NEW ZEALAND SERVICE.

SHE WAS THE ROYAL YACHT FOR THE COMMONWEALTH TOUR OF 1953-54.

2 AUGUST 1968 \_\_\_\_\_

SERIOUSLY DAMAGED BY FIRE 200 MILES FROM WELLINGTON AND SEVEN PEOPLE KILLED. TEMPORARY REPAIRS IN WELLINGTON, BUT FULL REPAIRS THOUGHT TO BE UNECONOMICAL, SO ON 13 AUGUST 1969 SHE WAS SOLD FOR SCRAP.

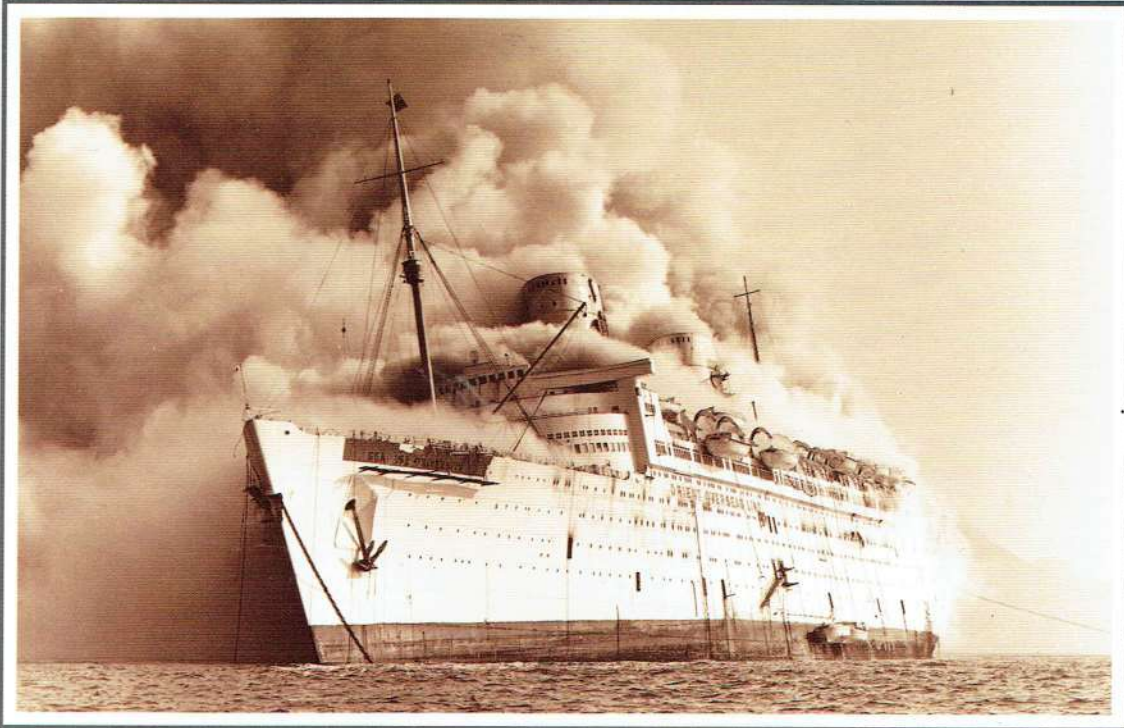


16/30

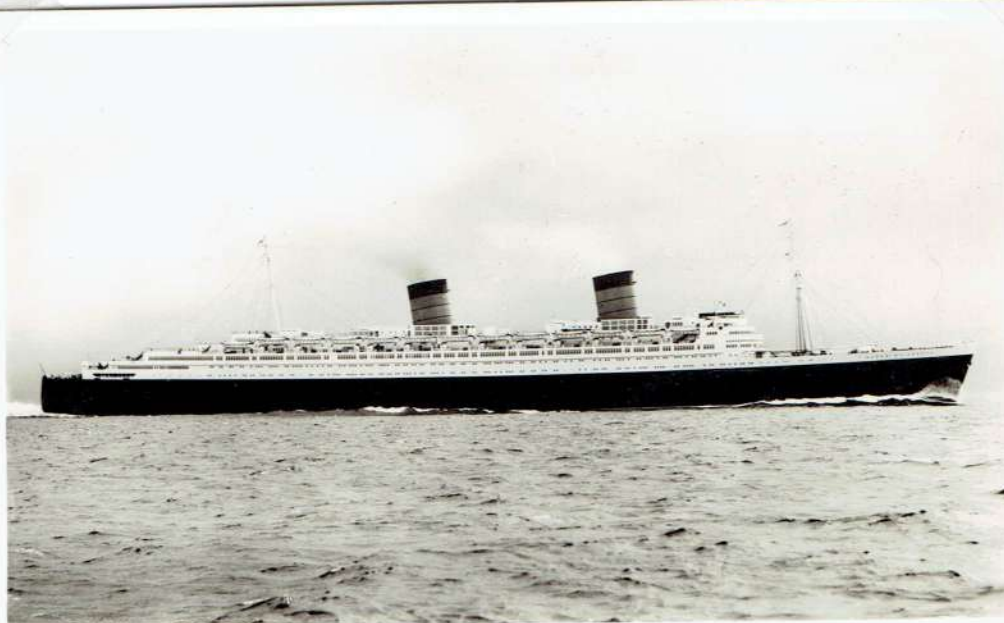


THE DEATH OF A QUEEN - 1972  
ONE OF THE MOST BEAUTIFUL OF PASSINGER LINERS - THE QUEEN ELIZABETH  
ON FIRE IN HONG KONG HARBOUR IN 1972.

LOT 59



一九七二年一月九日“海上學府”巨輪火災・全船付諸一炬  
"Seawise University" on fire, 9 Jan. 1972.



CUNARD R.M.S. QUEEN ELIZABETH 83,673 TONS.

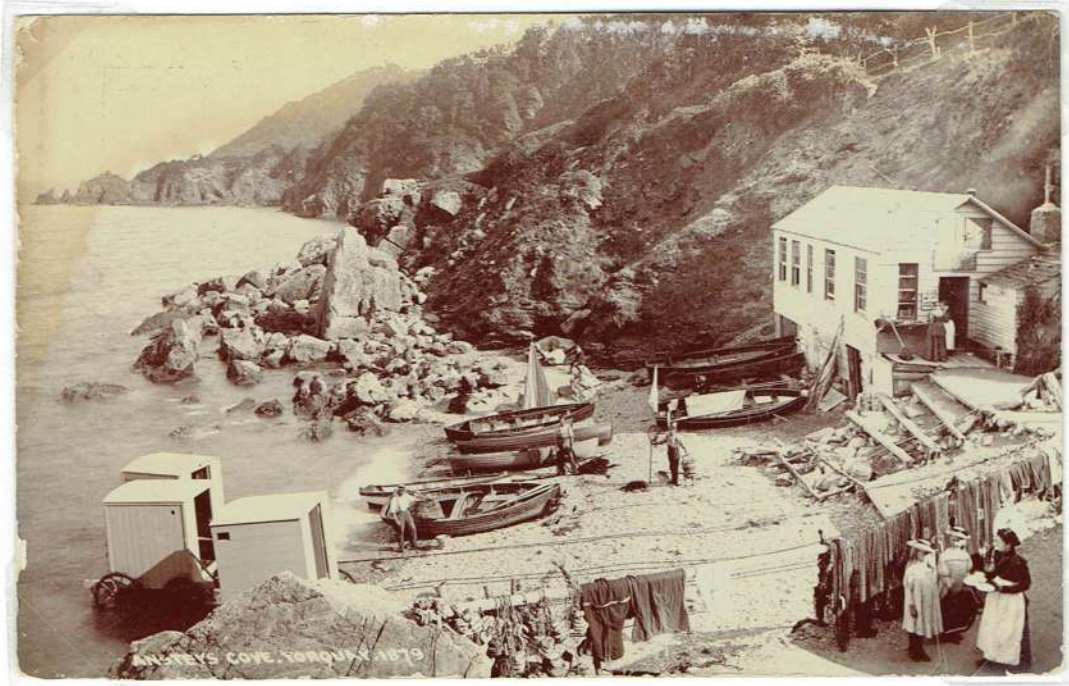


# BATHING MACHINES

LOT 60



PUB: A.W. WARDELL. BRIGHTON N° 87.



BATHING MACHINES AT ANSTEYS COVE. TORQUAY IN 1879.

db



AT THE SEASIDE.

PALACE PIER. BRIGHTON.

LOT 60



PUB: A.W. WARDELL. BRIGHTON

BRIGHTON'S PALACE PIER OPENED IN 1899 WAS DESIGNED BY P. ST GEORGE MOORE.  
(PRONOUNCED SINJIN) IT HAS BEEN DESCRIBED AS 'THE GRANDEST PIER TO BE BUILT.'  
THE PIEREND THEATRE WAS OPENED IN 1901 AND THE PAVILION IN 1910.



PUB: UNKNOWN

FAMOUS FOR ITS STALLS SELLING COCKLES AND WHELKS, "WHAT THE BUTLER SAW" MACHINES, AND  
CONCERT PARTY'S

*[Handwritten signature]*



BRITISH SEASIDE CONCERT PARTIES.

# THE YACHTSMEN

LOT 60



PUB: EDWARD COX. 16 CECIL SQUARE .MARGATE .ENGLAND



THE YACHTSMEN SHOWS AT 11.3 AND 7.

A LONG ROW OF BATHING MACHINES AND A PENNY FOR A CUP OF TEA: RAMSGATE. KENT. ABOUT 1908

PUB: UNKNOWN